

DATASHEET

SCN2B Rabbit Polyclonal Antibody

CAT. NO. APA07534

KEY FEATURES

| | | | |
|---------------|---|---------------|---------------------|
| Target | SCN2B | Source / Host | Rabbit |
| Reactivity | Human, Mouse, Rat, Dog | Clonality | Polyclonal |
| Applications | WB | Conjugation | Unconjugated |
| Form / Buffer | Liquid in 0.42% Potassium phosphate, 0.87% Sodium chloride, pH 7.3, 30% glycerol, and 0.01% sodium azide. | | Storage at -20°C |

BACKGROUND

Regulatory subunit of multiple voltage-gated sodium (Nav) channels directly mediating the depolarization of excitable membranes channels directly mediating the depolarization of excitable membranes . Navs, also called VGSCs (voltage-gated sodium channels) or VDSCs (voltage-dependent sodium channels), operate by switching between closed and open conformations depending on the voltage difference across the membrane. In the open conformation they allow Na⁽⁺⁾ ions to selectively pass through the pore, along their electrochemical gradient. The influx of Na⁺ ions provokes membrane depolarization, initiating the propagation of electrical signals throughout cells and tissues . The accessory beta subunits participate in localization and functional modulation of the Nav channels .

APPLICATION

To ensure optimal assay performance, AREX recommends conducting reagent titration tailored to each testing system for optimal detection results.

| | |
|----|----------------|
| WB | 1:500 - 1:1000 |
|----|----------------|

*Results are sample-specific. Please refer to your local assay conditions and test parameters for reference.

PRODUCT OVERVIEW

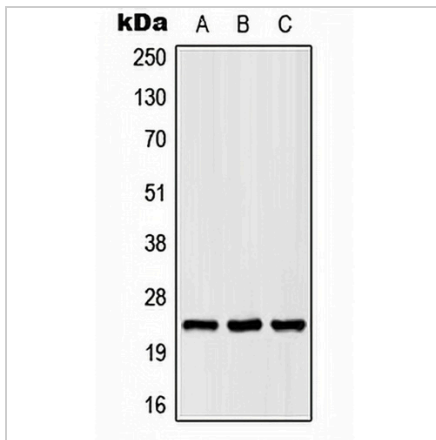
| | |
|-------------------|--|
| Description | Rabbit polyclonal antibody to SCN2B |
| Specificity | Recognizes endogenous levels of SCN2B protein. |
| Antibody Type | Primary antibody |
| Immunogen | KLH-conjugated synthetic peptide encompassing a sequence within the center region of human SCN2B. The exact sequence is proprietary. |
| Purification | The antibody was purified by immunogen affinity chromatography. |
| Molecular Weight | Predicted: 24 kD; Observed: 24 kD |
| Form/Buffer | Liquid in 0.42% Potassium phosphate, 0.87% Sodium chloride, pH 7.3, 30% glycerol, and 0.01% sodium azide. |
| Alternative Names | Sodium channel subunit beta-2 |
| Gene Symbol | SCN2B |
| Entrez Gene | 6327(Human); 72821(Mouse); 25349(Rat) |
| SwissProt | O60939(Human); Q56A07(Mouse); P54900(Rat) |

*AREX continuously optimizes our products. Webpage content may not reflect the latest updates. For inquiries, please contact info@arexbio.com or your local distributor.

*Clone Number, Reactivity, Source/Host and Clonality can be found in the product name and Key Features section above.

DATASHEET**SCN2B Rabbit Polyclonal Antibody**

CAT. NO. APA07534

DATA

Western blot analysis of SCN2B expression in HEK293T (A), Raw264.7 (B), rat liver (C) whole cell lysates. (Predicted band size: 24 kD; Observed band size: 24 kD)

STORAGE

Store at 4°C short term. For long term storage, store at -20°C, avoiding freeze/thaw cycles.

NOTE

For Research Use Only. Not for diagnostic, therapeutics, prophylactic or in vivo use.