

DATASHEET

Alpha-sarcoglycan Rabbit Polyclonal Antibody

CAT. NO. APA07547

KEY FEATURES

Target	Alpha-sarcoglycan	Source / Host	Rabbit
Reactivity	Human, Mouse, Rat, Bovine, Pig	Clonality	Polyclonal
Applications	WB, IF/ICC	Conjugation	Unconjugated
Form / Buffer	Liquid in 0.42% Potassium phosphate, 0.87% Sodium chloride, pH 7.3, 30% glycerol, and 0.01% sodium azide.		Storage at -20°C

BACKGROUND

Component of the sarcoglycan complex, a subcomplex of the dystrophin-glycoprotein complex which forms a link between the F-actin cytoskeleton and the extracellular matrix.

APPLICATION

To ensure optimal assay performance, AREX recommends conducting reagent titration tailored to each testing system for optimal detection results.

WB	1:500 - 1:1000
IF/ICC	1:50 - 1:200

*Results are sample-specific. Please refer to your local assay conditions and test parameters for reference.

PRODUCT OVERVIEW

Description	Rabbit polyclonal antibody to Alpha-sarcoglycan
Specificity	Recognizes endogenous levels of Alpha-sarcoglycan protein.
Antibody Type	Primary antibody
Immunogen	KLH-conjugated synthetic peptide encompassing a sequence within the center region of human Alpha-sarcoglycan. The exact sequence is proprietary.
Purification	The antibody was purified by immunogen affinity chromatography.
Molecular Weight	Predicted: 42 kD; Observed: 43 kD
Form/Buffer	Liquid in 0.42% Potassium phosphate, 0.87% Sodium chloride, pH 7.3, 30% glycerol, and 0.01% sodium azide.
Alternative Names	ADL; DAG2; Alpha-sarcoglycan; Alpha-SG; 50 kDa dystrophin-associated glycoprotein; 50DAG; Adhalin; Dystroglycan-2
Gene Symbol	SGCA
Entrez Gene	6442(Human); 20391(Mouse)
SwissProt	Q16586(Human); P82350(Mouse)

*AREX continuously optimizes our products. Webpage content may not reflect the latest updates. For inquiries, please contact info@arexbio.com or your local distributor.

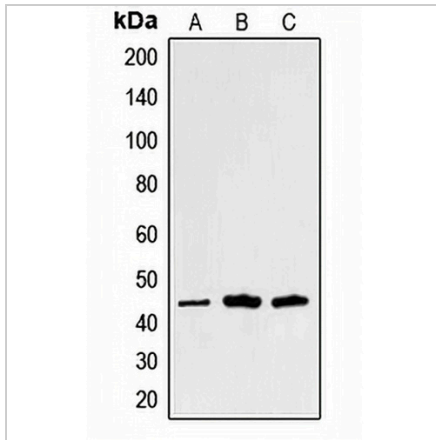
*Clone Number, Reactivity, Source/Host and Clonality can be found in the product name and Key Features section above.

DATASHEET

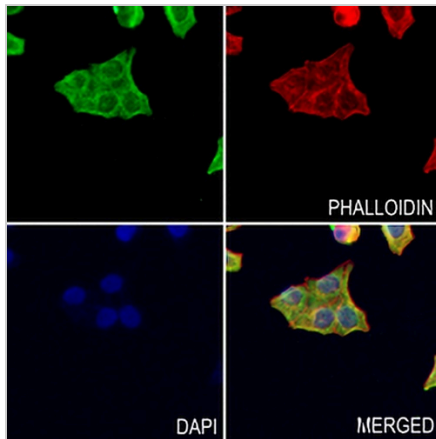
Alpha-sarcoglycan Rabbit Polyclonal Antibody

CAT. NO. APA07547

DATA



Western blot analysis of Alpha-sarcoglycan expression in HuvEc (A), Raw264.7 (B), PC12 (C) whole cell lysates. (Predicted band size: 42 kD; Observed band size: 43 kD)



Immunofluorescent analysis of Alpha-sarcoglycan staining in MCF7 cells. Formalin-fixed cells were permeabilized with 0.1% Triton X-100 in TBS for 5-10 minutes and blocked with 3% BSA-PBS for 30 minutes at room temperature. Cells were probed with the primary antibody in 3% BSA-PBS and incubated overnight at 4 °C in a humidified chamber. Cells were washed with PBST and incubated with a AREX® Fluor 488 -conjugated secondary antibody (green) in PBS at room temperature in the dark. Phalloidin - AREX® Fluor 594 was used to stain Actin filaments (red). DAPI was used to stain the cell nuclei (blue).

STORAGE

Store at 4°C short term. For long term storage, store at -20°C, avoiding freeze/thaw cycles.

NOTE

For Research Use Only. Not for diagnostic, therapeutics, prophylactic or in vivo use.