

**DATASHEET**

**GLUT1 Rabbit Polyclonal Antibody**

CAT. NO. APA07556

**KEY FEATURES**

Target	GLUT1	Source / Host	Rabbit
Reactivity	Human, Mouse, Rat, Bovine, Dog, Pig, Rabbit, Sheep	Clonality	Polyclonal
Applications	WB, IHC	Conjugation	Unconjugated
Form / Buffer	Liquid in 0.42% Potassium phosphate, 0.87% Sodium chloride, pH 7.3, 30% glycerol, and 0.01% sodium azide.		Storage at -20°C

**BACKGROUND**

Facilitative glucose transporter, which is responsible for constitutive or basal glucose uptake . Has a very broad substrate specificity; can transport a wide range of aldoses including both pentoses and hexoses . Most important energy carrier of the brain: present at the blood-brain barrier and assures the energy-independent, facilitative transport of glucose into the brain . In association with BSG and NXNL1, promotes retinal cone survival by increasing glucose uptake into photoreceptors . Required for mesendoderm differentiation .

**APPLICATION**

To ensure optimal assay performance, AREX recommends conducting reagent titration tailored to each testing system for optimal detection results.

WB	1:500 - 1:1000
IHC	1:50 - 1:100

\*Results are sample-specific. Please refer to your local assay conditions and test parameters for reference.

**PRODUCT OVERVIEW**

Description	Rabbit polyclonal antibody to GLUT1
Specificity	Recognizes endogenous levels of GLUT1 protein.
Antibody Type	Primary antibody
Immunogen	KLH-conjugated synthetic peptide encompassing a sequence within the C-term region of human GLUT1. The exact sequence is proprietary.
Purification	The antibody was purified by immunogen affinity chromatography.
Molecular Weight	Predicted: 54 kD; Observed: 55 kD
Form/Buffer	Liquid in 0.42% Potassium phosphate, 0.87% Sodium chloride, pH 7.3, 30% glycerol, and 0.01% sodium azide.
Alternative Names	GLUT1; Solute carrier family 2, facilitated glucose transporter member 1; Glucose transporter type 1, erythrocyte/brain; GLUT-1; HepG2 glucose transporter
Gene Symbol	SLC2A1
Entrez Gene	6513(Human); 20525(Mouse); 24778(Rat)
SwissProt	P11166(Human); P17809(Mouse); P11167(Rat)

\*AREX continuously optimizes our products. Webpage content may not reflect the latest updates. For inquiries, please contact [info@arexbio.com](mailto:info@arexbio.com) or your local distributor.

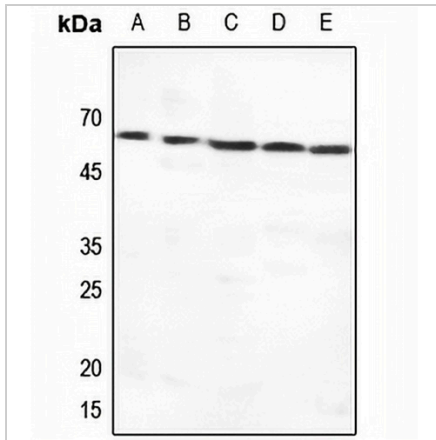
\*Clone Number, Reactivity, Source/Host and Clonality can be found in the product name and Key Features section above.

**DATASHEET**

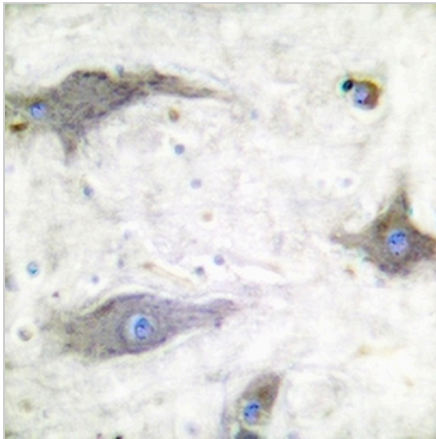
**GLUT1 Rabbit Polyclonal Antibody**

CAT. NO. APA07556

**DATA**



Western blot analysis of GLUT1 expression in HEK293T (A), HeLa (B), HGC27 (C), mouse lung (D), rat lung (E) whole cell lysates. (Predicted band size: 54 kD; Observed band size: 55 kD)



Immunohistochemical analysis of GLUT1 staining in human brain formalin fixed paraffin embedded tissue section. The section was pre-treated using heat mediated antigen retrieval with sodium citrate buffer (pH 6.0). The section was then incubated with the antibody at room temperature and detected using an HRP conjugated compact polymer system. DAB was used as the chromogen. The section was then counterstained with haematoxylin and mounted with DPX.

**STORAGE**

Store at 4°C short term. For long term storage, store at -20°C, avoiding freeze/thaw cycles.

**NOTE**

For Research Use Only. Not for diagnostic, therapeutics, prophylactic or in vivo use.