

## DATASHEET

# GLUT2 Rabbit Polyclonal Antibody

CAT. NO. APA07557

### KEY FEATURES

Target	GLUT2	Source / Host	Rabbit
Reactivity	Human, Mouse, Rat	Clonality	Polyclonal
Applications	WB	Conjugation	Unconjugated
Form / Buffer	Liquid in 0.42% Potassium phosphate, 0.87% Sodium chloride, pH 7.3, 30% glycerol, and 0.01% sodium azide.		Storage at -20°C

### BACKGROUND

Facilitative hexose transporter that mediates the transport of glucose, fructose and galactose . Likely mediates the bidirectional transfer of glucose across the plasma membrane of hepatocytes and is responsible for uptake of glucose by the beta cells; may comprise part of the glucose-sensing mechanism of beta cells . May also participate with the Na(+)/glucose cotransporter in the transcellular transport of glucose in the small intestine and kidney . Also able to mediate the transport of dehydroascorbate and urate .

### APPLICATION

To ensure optimal assay performance, AREX recommends conducting reagent titration tailored to each testing system for optimal detection results.

WB	1:500 - 1:1000
----	----------------

\*Results are sample-specific. Please refer to your local assay conditions and test parameters for reference.

### PRODUCT OVERVIEW

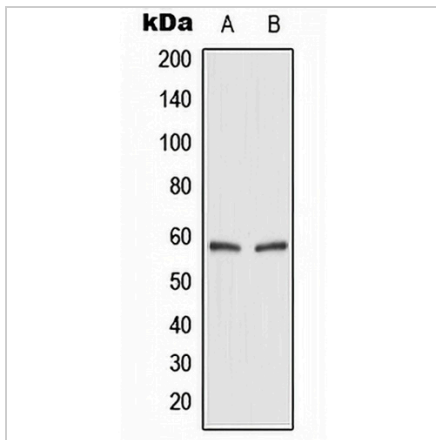
Description	Rabbit polyclonal antibody to GLUT2
Specificity	Recognizes endogenous levels of GLUT2 protein.
Antibody Type	Primary antibody
Immunogen	KLH-conjugated synthetic peptide encompassing a sequence within the center region of human GLUT2. The exact sequence is proprietary.
Purification	The antibody was purified by immunogen affinity chromatography.
Molecular Weight	Predicted: 44; Observed: 57 kD
Form/Buffer	Liquid in 0.42% Potassium phosphate, 0.87% Sodium chloride, pH 7.3, 30% glycerol, and 0.01% sodium azide.
Alternative Names	GLUT2; Solute carrier family 2, facilitated glucose transporter member 2; Glucose transporter type 2, liver; GLUT-2
Gene Symbol	SLC2A2
Entrez Gene	6514(Human)
SwissProt	P11168(Human); P12336(Rat)

\*AREX continuously optimizes our products. Webpage content may not reflect the latest updates. For inquiries, please contact [info@arexbio.com](mailto:info@arexbio.com) or your local distributor.

\*Clone Number, Reactivity, Source/Host and Clonality can be found in the product name and Key Features section above.

**DATASHEET****GLUT2 Rabbit Polyclonal Antibody**

CAT. NO. APA07557

**DATA**

Western blot analysis of GLUT2 expression in HEK293T (A), rat kidney (B) whole cell lysates. (Predicted band size: 44; 57 kD; Observed band size: 57 kD)

**STORAGE**

Store at 4°C short term. For long term storage, store at -20°C, avoiding freeze/thaw cycles.

**NOTE**

For Research Use Only. Not for diagnostic, therapeutics, prophylactic or in vivo use.