

DATASHEET

SLC22A2 Rabbit Polyclonal Antibody

CAT. NO. APA07567

KEY FEATURES

Target	SLC22A2	Source / Host	Rabbit
Reactivity	Human, Mouse, Rat	Clonality	Polyclonal
Applications	WB	Conjugation	Unconjugated
Form / Buffer	Liquid in 0.42% Potassium phosphate, 0.87% Sodium chloride, pH 7.3, 30% glycerol, and 0.01% sodium azide.		Storage at-20°C

BACKGROUND

Electrogenic voltage-dependent transporter that mediates the transport of a variety of organic cations such as endogenous bioactive amines, cationic drugs and xenobiotics . Functions as a Na(+)-independent, bidirectional uniporter . Cation cellular uptake or release is driven by the electrochemical potential, i.e. membrane potential and concentration gradient . However, may also engage electroneutral cation exchange when saturating concentrations of cation substrates are reached . Predominantly expressed at the basolateral membrane of hepatocytes and proximal tubules and involved in the uptake and disposition of cationic compounds by hepatic and renal clearance from the blood flow .

APPLICATION

To ensure optimal assay performance, AREX recommends conducting reagent titration tailored to each testing system for optimal detection results.

WB	1:500 - 1:1000
----	----------------

*Results are sample-specific. Please refer to your local assay conditions and test parameters for reference.

PRODUCT OVERVIEW

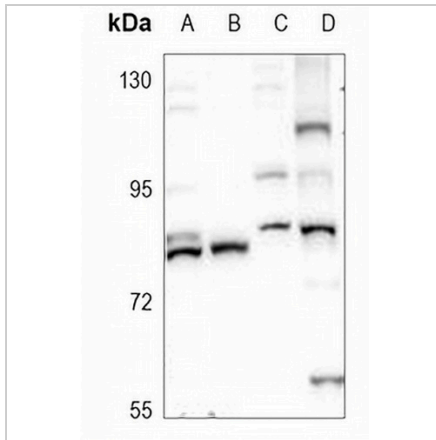
Description	Rabbit polyclonal antibody to SLC22A2
Specificity	Recognizes endogenous levels of SLC22A2 protein.
Antibody Type	Primary antibody
Immunogen	KLH-conjugated synthetic peptide encompassing a sequence within the C-term region of human SLC22A2. The exact sequence is proprietary.
Purification	The antibody was purified by immunogen affinity chromatography.
Molecular Weight	Predicted: 62 kD; Observed: 80 kD
Form/Buffer	Liquid in 0.42% Potassium phosphate, 0.87% Sodium chloride, pH 7.3, 30% glycerol, and 0.01% sodium azide.
Alternative Names	OCT2; Solute carrier family 22 member 2; Organic cation transporter 2; hOCT2
Gene Symbol	SLC22A2
Entrez Gene	6582(Human); 20518(Mouse); 29503(Rat)
SwissProt	O15244(Human); O70577(Mouse); Q9R0W2(Rat)

*AREX continuously optimizes our products. Webpage content may not reflect the latest updates. For inquiries, please contact info@arexbio.com or your local distributor.

*Clone Number, Reactivity, Source/Host and Clonality can be found in the product name and Key Features section above.

DATASHEET**SLC22A2 Rabbit Polyclonal Antibody**

CAT. NO. APA07567

DATA

Western blot analysis of SLC22A2 expression in U87MG (A), A2780 (B), C6 (C), BV2 (D) whole cell lysates. (Predicted band size: 62 kD; Observed band size: 80 kD)

STORAGE

Store at 4°C short term. For long term storage, store at -20°C, avoiding freeze/thaw cycles.

NOTE

For Research Use Only. Not for diagnostic, therapeutics, prophylactic or in vivo use.