

DATASHEET

Acid Sphingomyelinase Rabbit Polyclonal Antibody

CAT. NO. APA07569

KEY FEATURES

Target	Acid Sphingomyelinase	Source / Host	Rabbit
Reactivity	Human, Mouse, Rat, Bovine, Sheep	Clonality	Polyclonal
Applications	WB	Conjugation	Unconjugated
Form / Buffer	Liquid in 0.42% Potassium phosphate, 0.87% Sodium chloride, pH 7.3, 30% glycerol, and 0.01% sodium azide.		Storage at-20°C

BACKGROUND

Converts sphingomyelin to ceramide . Exists as two enzymatic forms that arise from alternative trafficking of a single protein precursor, one that is targeted to the endolysosomal compartment, whereas the other is released extracellularly . However, in response to various forms of stress, lysosomal exocytosis may represent a major source of the secretory form .

APPLICATION

To ensure optimal assay performance, AREX recommends conducting reagent titration tailored to each testing system for optimal detection results.

WB	1:500 - 1:1000
----	----------------

*Results are sample-specific. Please refer to your local assay conditions and test parameters for reference.

PRODUCT OVERVIEW

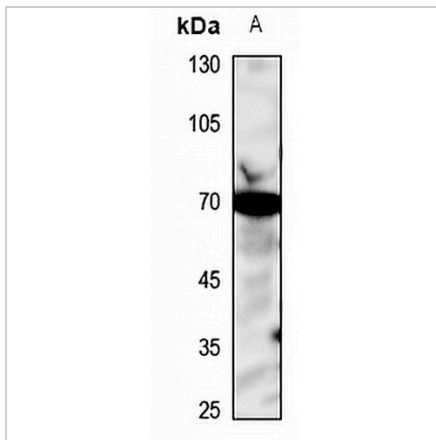
Description	Rabbit polyclonal antibody to Acid Sphingomyelinase
Specificity	Recognizes endogenous levels of Acid Sphingomyelinase protein.
Antibody Type	Primary antibody
Immunogen	KLH-conjugated synthetic peptide encompassing a sequence within the center region of human Acid Sphingomyelinase. The exact sequence is proprietary.
Purification	The antibody was purified by immunogen affinity chromatography.
Molecular Weight	Predicted: 63; Observed: 70 kD
Form/Buffer	Liquid in 0.42% Potassium phosphate, 0.87% Sodium chloride, pH 7.3, 30% glycerol, and 0.01% sodium azide.
Alternative Names	ASM; Sphingomyelin phosphodiesterase; Acid sphingomyelinase; aSMase
Gene Symbol	SMPD1
Entrez Gene	6609(Human); 20597(Mouse)
SwissProt	P17405(Human); Q04519(Mouse)

*AREX continuously optimizes our products. Webpage content may not reflect the latest updates. For inquiries, please contact info@arexbio.com or your local distributor.

*Clone Number, Reactivity, Source/Host and Clonality can be found in the product name and Key Features section above.

DATASHEET**Acid Sphingomyelinase Rabbit Polyclonal Antibody**

CAT. NO. APA07569

DATA

Western blot analysis of Acid Sphingomyelinase expression in HL60 (A) whole cell lysates.
(Predicted band size: 63; 64; 69 kD; Observed band size: 70 kD)

STORAGE

Store at 4°C short term. For long term storage, store at -20°C, avoiding freeze/thaw cycles.

NOTE

For Research Use Only. Not for diagnostic, therapeutics, prophylactic or in vivo use.