

DATASHEET

TROVE2 Rabbit Polyclonal Antibody

CAT. NO. APA07585

KEY FEATURES

Target	TROVE2	Source / Host	Rabbit
Reactivity	Human, Mouse, Rat, Monkey	Clonality	Polyclonal
Applications	WB, IF/ICC	Conjugation	Unconjugated
Form / Buffer	Liquid in 0.42% Potassium phosphate, 0.87% Sodium chloride, pH 7.3, 30% glycerol, and 0.01% sodium azide.		Storage at-20°C

BACKGROUND

RNA-binding protein that binds to misfolded non-coding RNAs, pre-5S rRNA, and several small cytoplasmic RNA molecules known as Y RNAs . Binds to endogenous Alu retroelements which are induced by type I interferon and stimulate proinflammatory cytokine secretion . Regulates the expression of Alu retroelements as well as inflammatory genes . May play roles in cilia formation and/or maintenance .

APPLICATION

To ensure optimal assay performance, AREX recommends conducting reagent titration tailored to each testing system for optimal detection results.

WB	1:500 - 1:1000
IF/ICC	1:50 - 1:200

*Results are sample-specific. Please refer to your local assay conditions and test parameters for reference.

PRODUCT OVERVIEW

Description	Rabbit polyclonal antibody to TROVE2
Specificity	Recognizes endogenous levels of TROVE2 protein.
Antibody Type	Primary antibody
Immunogen	KLH-conjugated synthetic peptide encompassing a sequence within the center region of human TROVE2. The exact sequence is proprietary.
Purification	The antibody was purified by immunogen affinity chromatography.
Molecular Weight	Predicted: 60 kD; Observed: 60 kD
Form/Buffer	Liquid in 0.42% Potassium phosphate, 0.87% Sodium chloride, pH 7.3, 30% glycerol, and 0.01% sodium azide.
Alternative Names	RO60; SSA2; 60 kDa SS-A/Ro ribonucleoprotein; 60 kDa Ro protein; 60 kDa ribonucleoprotein Ro; RoRNP; Ro 60 kDa autoantigen; Sjogren syndrome antigen A2; Sjogren syndrome type A antigen; SS-A; TROVE domain family member 2
Gene Symbol	TROVE2
Entrez Gene	6738(Human); 20822(Mouse)
SwissProt	P10155(Human); O08848(Mouse)

*AREX continuously optimizes our products. Webpage content may not reflect the latest updates. For inquiries, please contact info@arexbio.com or your local distributor.

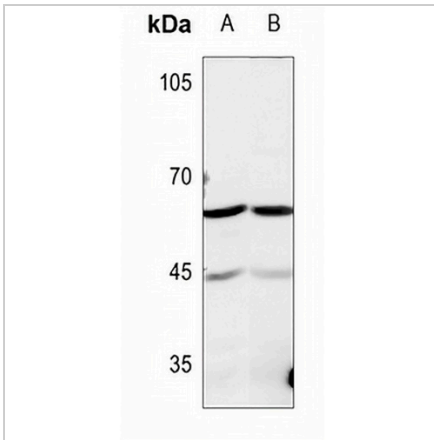
*Clone Number, Reactivity, Source/Host and Clonality can be found in the product name and Key Features section above.

DATASHEET

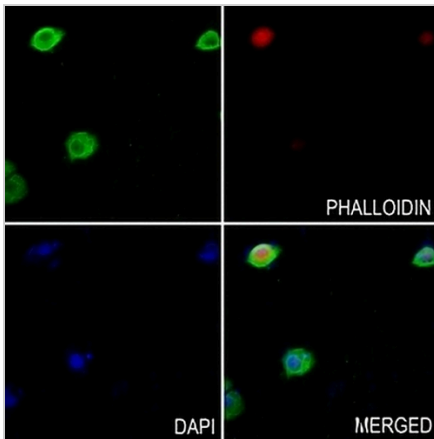
TROVE2 Rabbit Polyclonal Antibody

CAT. NO. APA07585

DATA



Western blot analysis of TROVE2 expression in HEK293T (A), A549 (B) whole cell lysates. (Predicted band size: 60 kD; Observed band size: 60 kD)



Immunofluorescent analysis of TROVE2 staining in HeLa cells. Formalin-fixed cells were permeabilized with 0.1% Triton X-100 in TBS for 5-10 minutes and blocked with 3% BSA-PBS for 30 minutes at room temperature. Cells were probed with the primary antibody in 3% BSA-PBS and incubated overnight at 4 °C in a humidified chamber. Cells were washed with PBST and incubated with a AREX® Fluor 488 -conjugated secondary antibody (green) in PBS at room temperature in the dark. Phalloidin - AREX® Fluor 594 was used to stain Actin filaments (red). DAPI was used to stain the cell nuclei (blue).

STORAGE

Store at 4°C short term. For long term storage, store at -20°C, avoiding freeze/thaw cycles.

NOTE

For Research Use Only. Not for diagnostic, therapeutics, prophylactic or in vivo use.