

DATASHEET

CD156b Rabbit Polyclonal Antibody

CAT. NO. APA07612

KEY FEATURES

Target	CD156b	Source / Host	Rabbit
Reactivity	Human, Mouse, Rat	Clonality	Polyclonal
Applications	WB	Conjugation	Unconjugated
Form / Buffer	Liquid in 0.42% Potassium phosphate, 0.87% Sodium chloride, pH 7.3, 30% glycerol, and 0.01% sodium azide.		Storage at -20°C

BACKGROUND

Transmembrane metalloprotease which mediates the ectodomain shedding of a myriad of transmembrane proteins including adhesion proteins, growth factor precursors and cytokines important for inflammation and immunity . Cleaves the membrane-bound precursor of TNF to its mature soluble form . Responsible for the proteolytical release of soluble JAM3 from endothelial cells surface . Responsible for the proteolytic release of several other cell-surface proteins, including p75 TNF-receptor, interleukin 1 receptor type II, p55 TNF-receptor, transforming growth factor-alpha, L-selectin, growth hormone receptor, MUC1 and the amyloid precursor protein .

APPLICATION

To ensure optimal assay performance, AREX recommends conducting reagent titration tailored to each testing system for optimal detection results.

WB	1:500 - 1:1000
----	----------------

*Results are sample-specific. Please refer to your local assay conditions and test parameters for reference.

PRODUCT OVERVIEW

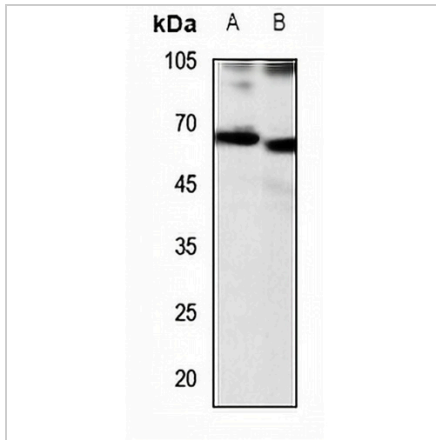
Description	Rabbit polyclonal antibody to CD156b
Specificity	Recognizes endogenous levels of CD156b protein.
Antibody Type	Primary antibody
Immunogen	KLH-conjugated synthetic peptide encompassing a sequence within the center region of human CD156b. The exact sequence is proprietary.
Purification	The antibody was purified by immunogen affinity chromatography.
Molecular Weight	Predicted: 93 kD; Observed: 68 kD
Form/Buffer	Liquid in 0.42% Potassium phosphate, 0.87% Sodium chloride, pH 7.3, 30% glycerol, and 0.01% sodium azide.
Alternative Names	CSVP; TACE; Disintegrin and metalloproteinase domain-containing protein 17; ADAM 17; Snake venom-like protease; TNF-alpha convertase; TNF-alpha-converting enzyme; CD156b
Gene Symbol	ADAM17
Entrez Gene	6868(Human); 11491(Mouse); 57027(Rat)
SwissProt	P78536(Human); Q9Z0F8(Mouse); Q9Z1K9(Rat)

*AREX continuously optimizes our products. Webpage content may not reflect the latest updates. For inquiries, please contact info@arexbio.com or your local distributor.

*Clone Number, Reactivity, Source/Host and Clonality can be found in the product name and Key Features section above.

DATASHEET**CD156b Rabbit Polyclonal Antibody**

CAT. NO. APA07612

DATA

Western blot analysis of CD156b expression in HEK293T (A), HGC27 (B) whole cell lysates. (Predicted band size: 93 kD; Observed band size: 68 kD)

STORAGE

Store at 4°C short term. For long term storage, store at -20°C, avoiding freeze/thaw cycles.

NOTE

For Research Use Only. Not for diagnostic, therapeutics, prophylactic or in vivo use.