

DATASHEET
ADA2A Rabbit Polyclonal Antibody
CAT. NO. APA07613
KEY FEATURES

Target	ADA2A	Source / Host	Rabbit
Reactivity	Human, Mouse, Rat, Bovine, Dog, Monkey, Pig, Rabbit	Clonality	Polyclonal
Applications	WB	Conjugation	Unconjugated
Form / Buffer	Liquid in 0.42% Potassium phosphate, 0.87% Sodium chloride, pH 7.3, 30% glycerol, and 0.01% sodium azide.		Storage at -20°C

BACKGROUND

Component of the ATAC complex, a complex with histone acetyltransferase activity on histones H3 and H4. Required for the function of some acidic activation domains, which activate transcription from a distant site . Binds double-stranded DNA. Binds dinucleosomes, probably at the linker region between neighboring nucleosomes. Plays a role in chromatin remodeling. May promote TP53/p53 'Lys-321' acetylation, leading to reduced TP53 stability and transcriptional activity . May also promote XRCC6 acetylation thus facilitating cell apoptosis in response to DNA damage .

APPLICATION

To ensure optimal assay performance, AREX recommends conducting reagent titration tailored to each testing system for optimal detection results.

WB	1:500 - 1:1000
----	----------------

*Results are sample-specific. Please refer to your local assay conditions and test parameters for reference.

PRODUCT OVERVIEW

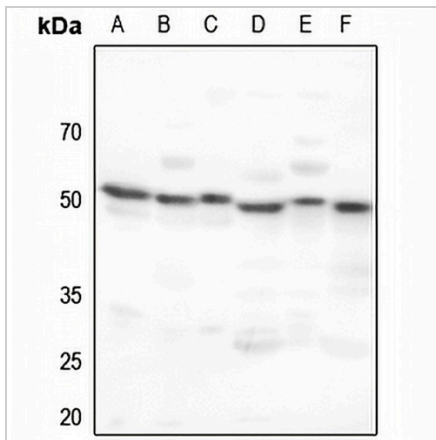
Description	Rabbit polyclonal antibody to ADA2A
Specificity	Recognizes endogenous levels of ADA2A protein.
Antibody Type	Primary antibody
Immunogen	KLH-conjugated synthetic peptide encompassing a sequence within the center region of human ADA2A. The exact sequence is proprietary.
Purification	The antibody was purified by immunogen affinity chromatography.
Molecular Weight	Predicted: 51 kD; Observed: 51 kD
Form/Buffer	Liquid in 0.42% Potassium phosphate, 0.87% Sodium chloride, pH 7.3, 30% glycerol, and 0.01% sodium azide.
Alternative Names	TADA2L; Transcriptional adapter 2-alpha; Transcriptional adapter 2-like; ADA2-like protein
Gene Symbol	TADA2A
Entrez Gene	6871(Human); 217031(Mouse); 360581(Rat)
SwissProt	O75478(Human); Q8CHV6(Mouse); Q6AYE3(Rat)

*AREX continuously optimizes our products. Webpage content may not reflect the latest updates. For inquiries, please contact info@arexbio.com or your local distributor.

*Clone Number, Reactivity, Source/Host and Clonality can be found in the product name and Key Features section above.

DATASHEET**ADA2A Rabbit Polyclonal Antibody**

CAT. NO. APA07613

DATA

Western blot analysis of ADA2A expression in HEK293T (A), A375 (B), HeLa (C), mouse liver (D), mouse kidney (E), rat liver (F) whole cell lysates. (Predicted band size: 51 kD; Observed band size: 51 kD)

STORAGE

Store at 4°C short term. For long term storage, store at -20°C, avoiding freeze/thaw cycles.

NOTE

For Research Use Only. Not for diagnostic, therapeutics, prophylactic or in vivo use.