

DATASHEET

GCFC2 Rabbit Polyclonal Antibody

CAT. NO. APA07618

KEY FEATURES

Target	GCFC2	Source / Host	Rabbit
Reactivity	Human, Mouse, Rat	Clonality	Polyclonal
Applications	WB	Conjugation	Unconjugated
Form / Buffer	Liquid in 0.42% Potassium phosphate, 0.87% Sodium chloride, pH 7.3, 30% glycerol, and 0.01% sodium azide.		Storage at -20°C

BACKGROUND

Involved in pre-mRNA splicing through regulating spliceosome C complex formation . May play a role during late-stage splicing events and turnover of excised introns .

APPLICATION

To ensure optimal assay performance, AREX recommends conducting reagent titration tailored to each testing system for optimal detection results.

WB	1:500 - 1:1000
----	----------------

*Results are sample-specific. Please refer to your local assay conditions and test parameters for reference.

PRODUCT OVERVIEW

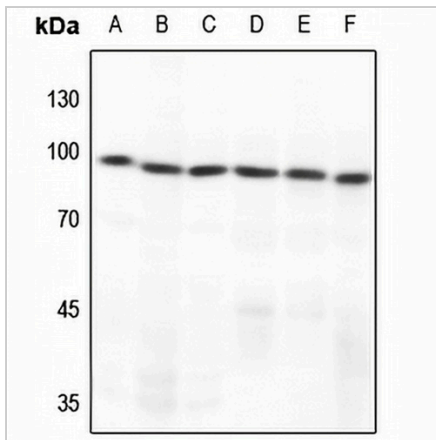
Description	Rabbit polyclonal antibody to GCFC2
Specificity	Recognizes endogenous levels of GCFC2 protein.
Antibody Type	Primary antibody
Immunogen	KLH-conjugated synthetic peptide encompassing a sequence within the center region of human GCFC2. The exact sequence is proprietary.
Purification	The antibody was purified by immunogen affinity chromatography.
Molecular Weight	Predicted: 89 kD; Observed: 95 kD
Form/Buffer	Liquid in 0.42% Potassium phosphate, 0.87% Sodium chloride, pH 7.3, 30% glycerol, and 0.01% sodium azide.
Alternative Names	C2orf3; GCF; TCF9; GC-rich sequence DNA-binding factor 2; GC-rich sequence DNA-binding factor; Transcription factor 9; TCF-9
Gene Symbol	GCFC2
Entrez Gene	6936(Human); 330361(Mouse)
SwissProt	P16383(Human); Q8BKT3(Mouse)

*AREX continuously optimizes our products. Webpage content may not reflect the latest updates. For inquiries, please contact info@arexbio.com or your local distributor.

*Clone Number, Reactivity, Source/Host and Clonality can be found in the product name and Key Features section above.

DATASHEET**GCFC2 Rabbit Polyclonal Antibody**

CAT. NO. APA07618

DATA

Western blot analysis of GCFC2 expression in rat spleen (A), rat testis (B), mouse spleen (C), mouse testis (D), HeLa (E), HEK293T (F) whole cell lysates. (Predicted band size: 89 kD; Observed band size: 95 kD)

STORAGE

Store at 4°C short term. For long term storage, store at -20°C, avoiding freeze/thaw cycles.

NOTE

For Research Use Only. Not for diagnostic, therapeutics, prophylactic or in vivo use.