

**DATASHEET**
**TERF1 (Phospho-S219) Rabbit Polyclonal Antibody**
**CAT. NO. APA07622**
**KEY FEATURES**

Target	TERF1 (Phospho-S219)	Source / Host	Rabbit
Reactivity	Human, Mouse, Rat	Clonality	Polyclonal
Applications	WB	Conjugation	Unconjugated
Form / Buffer	Liquid in 0.42% Potassium phosphate, 0.87% Sodium chloride, pH 7.3, 30% glycerol, and 0.01% sodium azide.	Storage	at-20°C

**BACKGROUND**

Binds the telomeric double-stranded 5'-TTAGGG-3' repeat and negatively regulates telomere length. Involved in the regulation of the mitotic spindle. Component of the shelterin complex (telosome) that is involved in the regulation of telomere length and protection. Shelterin associates with arrays of double-stranded 5'-TTAGGG-3' repeats added by telomerase and protects chromosome ends; without its protective activity, telomeres are no longer hidden from the DNA damage surveillance and chromosome ends are inappropriately processed by DNA repair pathways.

**APPLICATION**

To ensure optimal assay performance, AREX recommends conducting reagent titration tailored to each testing system for optimal detection results.

WB	1:500 - 1:1000
----	----------------

\*Results are sample-specific. Please refer to your local assay conditions and test parameters for reference.

**PRODUCT OVERVIEW**

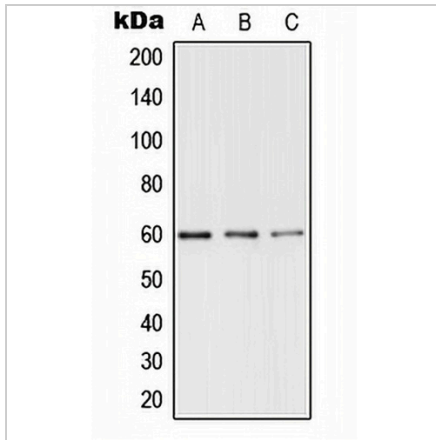
Description	Rabbit polyclonal antibody to TERF1 (Phospho-S219)
Specificity	Recognizes endogenous levels of TERF1 protein only when phosphorylated at S219.
Antibody Type	Primary antibody
Immunogen	KLH-conjugated synthetic phosphopeptide corresponding to residues surrounding S219 of human TERF1 protein. The exact sequence is proprietary.
Purification	The antibody was purified by immunogen affinity chromatography.
Molecular Weight	Predicted: 50 kD; Observed: 60 kD
Form/Buffer	Liquid in 0.42% Potassium phosphate, 0.87% Sodium chloride, pH 7.3, 30% glycerol, and 0.01% sodium azide.
Alternative Names	PIN2; TRBF1; TRF; TRF1; Telomeric repeat-binding factor 1; NIMA-interacting protein 2; TTAGGG repeat-binding factor 1; Telomeric protein Pin2/TRF1
Gene Symbol	TERF1
Entrez Gene	7013(Human); 21749(Mouse)
SwissProt	P54274(Human); P70371(Mouse)

\*AREX continuously optimizes our products. Webpage content may not reflect the latest updates. For inquiries, please contact [info@arexbio.com](mailto:info@arexbio.com) or your local distributor.

\*Clone Number, Reactivity, Source/Host and Clonality can be found in the product name and Key Features section above.

**DATASHEET****TERF1 (Phospho-S219) Rabbit Polyclonal Antibody**

CAT. NO. APA07622

**DATA**

Western blot analysis of TERF1 (Phospho-S219) expression in DLD UV-treated (A), Raw264.7 UV-treated (B), PC12 UV-treated (C) whole cell lysates. (Predicted band size: 50 kD; Observed band size: 60 kD)

**STORAGE**

Store at 4°C short term. For long term storage, store at -20°C, avoiding freeze/thaw cycles.

**NOTE**

For Research Use Only. Not for diagnostic, therapeutics, prophylactic or in vivo use.