

DATASHEET

TESK1 Rabbit Polyclonal Antibody

CAT. NO. APA07623

KEY FEATURES

| | | | |
|---------------|---|---------------|---------------------|
| Target | TESK1 | Source / Host | Rabbit |
| Reactivity | Human, Rat, Monkey | Clonality | Polyclonal |
| Applications | WB | Conjugation | Unconjugated |
| Form / Buffer | Liquid in 0.42% Potassium phosphate, 0.87% Sodium chloride, pH 7.3, 30% glycerol, and 0.01% sodium azide. | | Storage at -20°C |

BACKGROUND

Dual specificity protein kinase activity catalyzing autophosphorylation and phosphorylation of exogenous substrates on both serine/threonine and tyrosine residues . Regulates the cellular cytoskeleton by enhancing actin stress fiber formation via phosphorylation of cofilin and by preventing microtubule breakdown via inhibition of TAOK1/MARKK kinase activity . Inhibits podocyte motility via regulation of actin cytoskeletal dynamics and phosphorylation of CFL1 . Positively regulates integrin-mediated cell spreading, via phosphorylation of cofilin .

APPLICATION

To ensure optimal assay performance, AREX recommends conducting reagent titration tailored to each testing system for optimal detection results.

| | |
|----|----------------|
| WB | 1:500 - 1:1000 |
|----|----------------|

*Results are sample-specific. Please refer to your local assay conditions and test parameters for reference.

PRODUCT OVERVIEW

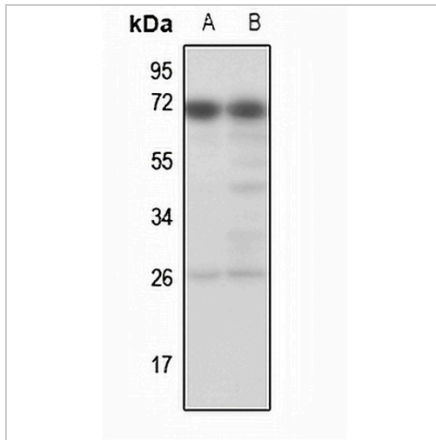
| | |
|-------------------|--|
| Description | Rabbit polyclonal antibody to TESK1 |
| Specificity | Recognizes endogenous levels of TESK1 protein. |
| Antibody Type | Primary antibody |
| Immunogen | KLH-conjugated synthetic peptide encompassing a sequence within the center region of human TESK1. The exact sequence is proprietary. |
| Purification | The antibody was purified by immunogen affinity chromatography. |
| Molecular Weight | Predicted: 67 kD; Observed: 68 kD |
| Form/Buffer | Liquid in 0.42% Potassium phosphate, 0.87% Sodium chloride, pH 7.3, 30% glycerol, and 0.01% sodium azide. |
| Alternative Names | Dual specificity testis-specific protein kinase 1; Testicular protein kinase 1 |
| Gene Symbol | TESK1 |
| Entrez Gene | 7016(Human); 29460(Rat) |
| SwissProt | Q15569(Human); Q63572(Rat) |

*AREX continuously optimizes our products. Webpage content may not reflect the latest updates. For inquiries, please contact info@arexbio.com or your local distributor.

*Clone Number, Reactivity, Source/Host and Clonality can be found in the product name and Key Features section above.

DATASHEET**TESK1 Rabbit Polyclonal Antibody**

CAT. NO. APA07623

DATA

Western blot analysis of TESK1 expression in rat liver (A), rat muscle (B) whole cell lysates. (Predicted band size: 67 kD; Observed band size: 68 kD)

STORAGE

Store at 4°C short term. For long term storage, store at -20°C, avoiding freeze/thaw cycles.

NOTE

For Research Use Only. Not for diagnostic, therapeutics, prophylactic or in vivo use.