

**DATASHEET**

**Tensin 1 (Phospho-Y1326) Rabbit Polyclonal Antibody**

CAT. NO. APA07655

**KEY FEATURES**

Target	Tensin 1 (Phospho-Y1326)	Source / Host	Rabbit
Reactivity	Human, Mouse, Rat, Pig	Clonality	Polyclonal
Applications	WB, IF/ICC	Conjugation	Unconjugated
Form / Buffer	Liquid in 0.42% Potassium phosphate, 0.87% Sodium chloride, pH 7.3, 30% glycerol, and 0.01% sodium azide.		Storage at-20°C

**BACKGROUND**

May act as a protein phosphatase and/or a lipid phosphatase (Probable). Involved in fibrillar adhesion formation . Involved in fibrillar adhesion formation . Essential for myofibroblast differentiation and myofibroblast-mediated extracellular matrix deposition . Enhances RHOA activation in the presence of DLC1 . Plays a role in cell polarization and migration . May be involved in cartilage development and in linking signal transduction pathways to the cytoskeleton .

**APPLICATION**

To ensure optimal assay performance, AREX recommends conducting reagent titration tailored to each testing system for optimal detection results.

WB	1:500 - 1:1000
IF/ICC	1:50 - 1:200

\*Results are sample-specific. Please refer to your local assay conditions and test parameters for reference.

**PRODUCT OVERVIEW**

Description	Rabbit polyclonal antibody to Tensin 1 (Phospho-Y1326)
Specificity	Recognizes endogenous levels of Tensin 1 protein only when phosphorylated at Y1326.
Antibody Type	Primary antibody
Immunogen	KLH-conjugated synthetic phosphopeptide corresponding to residues surrounding Y1326 of human Tensin 1 protein. The exact sequence is proprietary.
Purification	The antibody was purified by immunogen affinity chromatography.
Molecular Weight	Predicted: 185 kD; Observed: 200 kD
Form/Buffer	Liquid in 0.42% Potassium phosphate, 0.87% Sodium chloride, pH 7.3, 30% glycerol, and 0.01% sodium azide.
Alternative Names	TNS; Tensin-1
Gene Symbol	TNS1
Entrez Gene	7145(Human)
SwissProt	Q9HBL0(Human)

\*AREX continuously optimizes our products. Webpage content may not reflect the latest updates. For inquiries, please contact [info@arexbio.com](mailto:info@arexbio.com) or your local distributor.

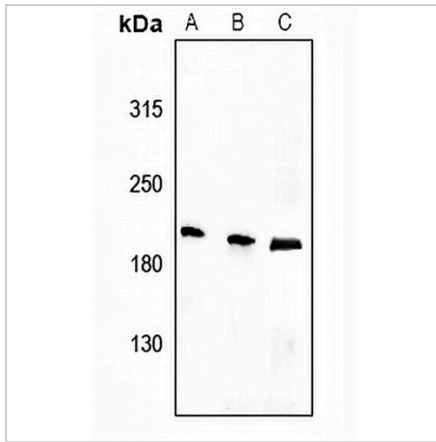
\*Clone Number, Reactivity, Source/Host and Clonality can be found in the product name and Key Features section above.

**DATASHEET**

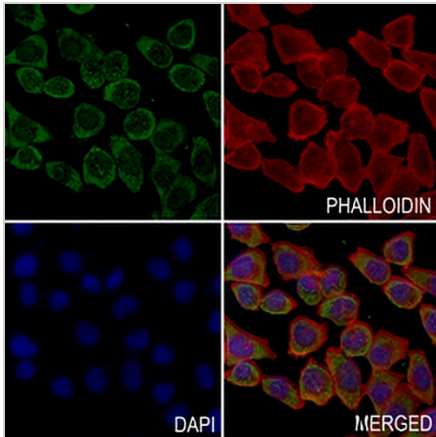
**Tensin 1 (Phospho-Y1326) Rabbit Polyclonal Antibody**

CAT. NO. APA07655

**DATA**



Western blot analysis of Tensin 1 (Phospho-Y1326) expression in MEF (A), PC12 (B), LOVO (C) whole cell lysates. (Predicted band size: 185 kD; Observed band size: 200 kD)



Immunofluorescent analysis of Tensin 1 (Phospho-Y1326) staining in MCF7 cells. Formalin-fixed cells were permeabilized with 0.1% Triton X-100 in TBS for 5-10 minutes and blocked with 3% BSA-PBS for 30 minutes at room temperature. Cells were probed with the primary antibody in 3% BSA-PBS and incubated overnight at 4 °C in a hidified chamber. Cells were washed with PBST and incubated with a AREX® Fluor 488 - conjugated secondary antibody (green) in PBS at room temperature in the dark. Phalloidin - AREX® Fluor 594 was used to stain Actin filaments (red). DAPI was used to stain the cell nuclei (blue).

**STORAGE**

Store at 4°C short term. For long term storage, store at -20°C, avoiding freeze/thaw cycles.

**NOTE**

For Research Use Only. Not for diagnostic, therapeutics, prophylactic or in vivo use.