

DATASHEET

UBA7 Rabbit Polyclonal Antibody

CAT. NO. APA07674

KEY FEATURES

Target	UBA7	Source / Host	Rabbit
Reactivity	Human, Rat	Clonality	Polyclonal
Applications	WB, IHC, IF/ICC	Conjugation	Unconjugated
Form / Buffer	Liquid in 0.42% Potassium phosphate, 0.87% Sodium chloride, pH 7.3, 30% glycerol, and 0.01% sodium azide.		Storage at -20°C

BACKGROUND

E1-activating enzyme that catalyzes the covalent conjugation of the ubiquitin-like protein product of ISG15 to additional interferon stimulated proteins (ISGs) as well as other cellular proteins such as P53 in a process termed protein ISGylation as well as other cellular proteins such as P53 in a process termed protein ISGylation. Plays an essential role in antiviral immunity together with ISG15 by restricting the replication of many viruses including rabies virus, influenza virus, sindbis virus, rotavirus or human cytomegalovirus. For example, ISG15 modification of influenza A protein NS1 disrupts the association of the NS1 with importin-alpha leading to NS1 nuclear import inhibition.

APPLICATION

To ensure optimal assay performance, AREX recommends conducting reagent titration tailored to each testing system for optimal detection results.

WB	1:500 - 1:1000
IHC	1:50 - 1:100
IF/ICC	1:50 - 1:200

*Results are sample-specific. Please refer to your local assay conditions and test parameters for reference.

PRODUCT OVERVIEW

Description	Rabbit polyclonal antibody to UBA7
Specificity	Recognizes endogenous levels of UBA7 protein.
Antibody Type	Primary antibody
Immunogen	KLH-conjugated synthetic peptide encompassing a sequence within the C-term region of human UBA7. The exact sequence is proprietary.
Purification	The antibody was purified by immunogen affinity chromatography.
Molecular Weight	Predicted: 111 kD; Observed: 112 kD
Form/Buffer	Liquid in 0.42% Potassium phosphate, 0.87% Sodium chloride, pH 7.3, 30% glycerol, and 0.01% sodium azide.
Alternative Names	UBE1L; UBE2; Ubiquitin-like modifier-activating enzyme 7; Ubiquitin-activating enzyme 7; D8; Ubiquitin-activating enzyme E1 homolog
Gene Symbol	UBA7
Entrez Gene	7318(Human)
SwissProt	P41226(Human)

*AREX continuously optimizes our products. Webpage content may not reflect the latest updates. For inquiries, please contact info@arexbio.com or your local distributor.

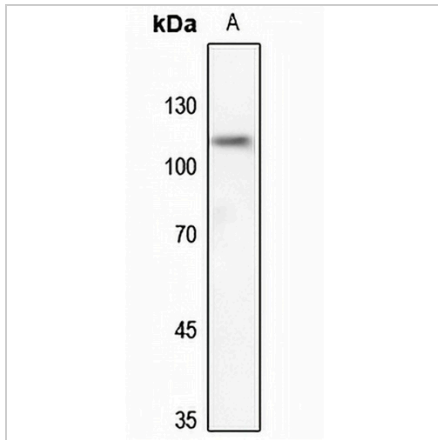
*Clone Number, Reactivity, Source/Host and Clonality can be found in the product name and Key Features section above.

DATASHEET

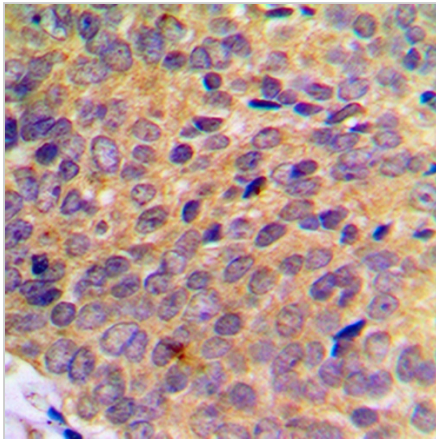
UBA7 Rabbit Polyclonal Antibody

CAT. NO. APA07674

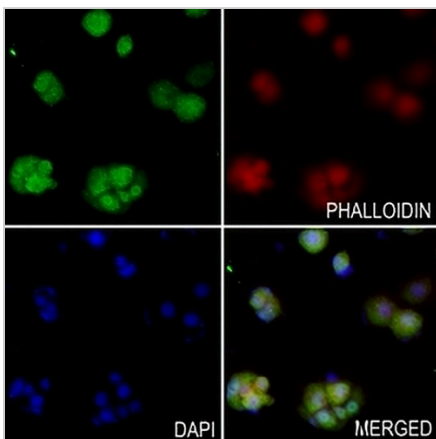
DATA



Western blot analysis of UBA7 expression in rat kidney (A) whole cell lysates. (Predicted band size: 111 kD; Observed band size: 112 kD)



Immunohistochemical analysis of UBA7 staining in human breast cancer formalin fixed paraffin embedded tissue section. The section was pre-treated using heat mediated antigen retrieval with sodium citrate buffer (pH 6.0). The section was then incubated with the antibody at room temperature and detected using an HRP conjugated compact polymer system. DAB was used as the chromogen. The section was then counterstained with haematoxylin and mounted with DPX.



Immunofluorescent analysis of UBA7 staining in HeLa cells. Formalin-fixed cells were permeabilized with 0.1% Triton X-100 in TBS for 5-10 minutes and blocked with 3% BSA-PBS for 30 minutes at room temperature. Cells were probed with the primary antibody in 3% BSA-PBS and incubated overnight at 4 °C in a humidified chamber. Cells were washed with PBST and incubated with a AREX® Fluor 488 -conjugated secondary antibody (green) in PBS at room temperature in the dark. Phalloidin - AREX® Fluor 594 was used to stain Actin filaments (red). DAPI was used to stain the cell nuclei (blue).

STORAGE

Store at 4°C short term. For long term storage, store at -20°C, avoiding freeze/thaw cycles.

NOTE

For Research Use Only. Not for diagnostic, therapeutics, prophylactic or in vivo use.