

DATASHEET
UBE2A/B Rabbit Polyclonal Antibody
CAT. NO. APA07675
KEY FEATURES

Target	UBE2A/B	Source / Host	Rabbit
Reactivity	Human, Mouse, Rat, Chicken, Zebrafish	Clonality	Polyclonal
Applications	WB, IF/ICC	Conjugation	Unconjugated
Form / Buffer	Liquid in 0.42% Potassium phosphate, 0.87% Sodium chloride, pH 7.3, 30% glycerol, and 0.01% sodium azide.		Storage at -20°C

BACKGROUND

E2 ubiquitin-conjugating enzyme that accepts ubiquitin from the ubiquitin-activating enzyme E1 and transfers it to a E3 ubiquitin-protein ligase . In vitro catalyzes 'Lys-11', as well as 'Lys-48'-linked polyubiquitination . Together with the E3 enzyme BRE1 (RNF20 and/or RNF40), plays a role in transcription regulation by catalyzing the monoubiquitination of histone H2B at 'Lys-120' to form H2BK120ub1 . H2BK120ub1 gives a specific tag for epigenetic transcriptional activation, elongation by RNA polymerase II, telomeric silencing, and is also a prerequisite for H3K4me and H3K79me formation . Involved in mitophagy by acting as a E2 ubiquitin-conjugating enzyme for PRKN . In association with the E3 enzyme UBR4, is involved in N-end rule-dependent protein degradation .

APPLICATION

To ensure optimal assay performance, AREX recommends conducting reagent titration tailored to each testing system for optimal detection results.

WB	1:500 - 1:1000
IF/ICC	1:50 - 1:200

*Results are sample-specific. Please refer to your local assay conditions and test parameters for reference.

PRODUCT OVERVIEW

Description	Rabbit polyclonal antibody to UBE2A/B
Specificity	Recognizes endogenous levels of UBE2A/B protein.
Antibody Type	Primary antibody
Immunogen	KLH-conjugated synthetic peptide encompassing a sequence within the C-term region of human UBE2A/B. The exact sequence is proprietary.
Purification	The antibody was purified by immunogen affinity chromatography.
Molecular Weight	Predicted: 17 kD; Observed: 17 kD
Form/Buffer	Liquid in 0.42% Potassium phosphate, 0.87% Sodium chloride, pH 7.3, 30% glycerol, and 0.01% sodium azide.
Alternative Names	UBE2A; RAD6A; Ubiquitin-conjugating enzyme E2 A; RAD6 homolog A; HR6A; hHR6A; Ubiquitin carrier protein A; Ubiquitin-protein ligase A; UBE2B; RAD6B; Ubiquitin-conjugating enzyme E2 B; RAD6 homolog B; HR6B; hHR6B; Ubiquitin carrier protein B; Ubiquitin-conjugating enzyme E2-17 kDa; Ubiquitin-protein ligase B
Gene Symbol	UBE2A; UBE2B
Entrez Gene	7320(Human); 22209; 22210(Mouse); 81816(Rat)
SwissProt	P49459; P63146(Human); Q9Z255; P63147(Mouse); P63149(Rat)

*AREX continuously optimizes our products. Webpage content may not reflect the latest updates. For inquiries, please contact info@arexbio.com or your local distributor.

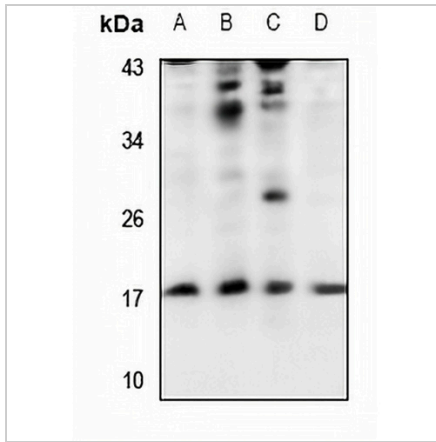
*Clone Number, Reactivity, Source/Host and Clonality can be found in the product name and Key Features section above.

DATASHEET

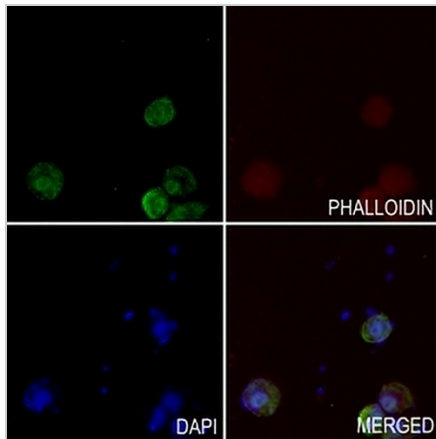
UBE2A/B Rabbit Polyclonal Antibody

CAT. NO. APA07675

DATA



Western blot analysis of UBE2A/B expression in MCF7 (A), A549 (B), C6 (C), MEF (D) whole cell lysates. (Predicted band size: 17 kD; Observed band size: 17 kD)



Immunofluorescent analysis of UBE2A/B staining in HeLa cells. Formalin-fixed cells were permeabilized with 0.1% Triton X-100 in TBS for 5-10 minutes and blocked with 3% BSA-PBS for 30 minutes at room temperature. Cells were probed with the primary antibody in 3% BSA-PBS and incubated overnight at 4 °C in a humidified chamber. Cells were washed with PBST and incubated with a AREX® Fluor 488 -conjugated secondary antibody (green) in PBS at room temperature in the dark. Phalloidin - AREX® Fluor 594 was used to stain Actin filaments (red). DAPI was used to stain the cell nuclei (blue).

STORAGE

Store at 4°C short term. For long term storage, store at -20°C, avoiding freeze/thaw cycles.

NOTE

For Research Use Only. Not for diagnostic, therapeutics, prophylactic or in vivo use.