

DATASHEET

ZIP7 Rabbit Polyclonal Antibody

CAT. NO. APA07722

KEY FEATURES

Target	ZIP7	Source / Host	Rabbit
Reactivity	Human, Mouse, Rat, Dog, Pig	Clonality	Polyclonal
Applications	WB, IF/ICC	Conjugation	Unconjugated
Form / Buffer	Liquid in 0.42% Potassium phosphate, 0.87% Sodium chloride, pH 7.3, 30% glycerol, and 0.01% sodium azide.		Storage at-20°C

BACKGROUND

Transports Zn(2+) from the endoplasmic reticulum (ER)/Golgi apparatus to the cytosol, playing an essential role in the regulation of cytosolic zinc levels from the endoplasmic reticulum (ER)/Golgi apparatus to the cytosol, playing an essential role in the regulation of cytosolic zinc levels . Acts as a gatekeeper of zinc release from intracellular stores, requiring post-translational activation by phosphorylation, resulting in activation of multiple downstream pathways leading to cell growth and proliferation . Has an essential role in B cell development and is required for proper B cell receptor signaling . Plays an important role in maintaining intestinal epithelial homeostasis and skin dermis development by regulating ER function .

APPLICATION

To ensure optimal assay performance, AREX recommends conducting reagent titration tailored to each testing system for optimal detection results.

WB	1:500 - 1:1000
IF/ICC	1:100 - 1:500

*Results are sample-specific. Please refer to your local assay conditions and test parameters for reference.

PRODUCT OVERVIEW

Description	Rabbit polyclonal antibody to ZIP7
Specificity	Recognizes endogenous levels of ZIP7 protein.
Antibody Type	Primary antibody
Immunogen	KLH-conjugated synthetic peptide encompassing a sequence within the center region of human ZIP7. The exact sequence is proprietary.
Purification	The antibody was purified by immunogen affinity chromatography.
Molecular Weight	Predicted: 50 kD; Observed: 50 kD
Form/Buffer	Liquid in 0.42% Potassium phosphate, 0.87% Sodium chloride, pH 7.3, 30% glycerol, and 0.01% sodium azide.
Alternative Names	HKE4; RING5; Zinc transporter SLC39A7; Histidine-rich membrane protein Ke4; Really interesting new gene 5 protein; Solute carrier family 39 member 7; Zrt-, Irt-like protein 7; ZIP7
Gene Symbol	SLC39A7
Entrez Gene	7922(Human); 14977(Mouse)
SwissProt	Q92504(Human); Q31125(Mouse)

*AREX continuously optimizes our products. Webpage content may not reflect the latest updates. For inquiries, please contact info@arex.bio or your local distributor.

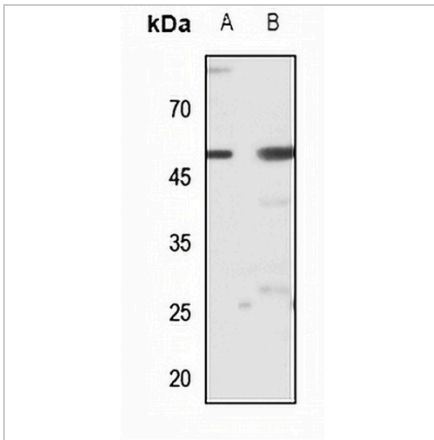
*Clone Number, Reactivity, Source/Host and Clonality can be found in the product name and Key Features section above.

DATASHEET

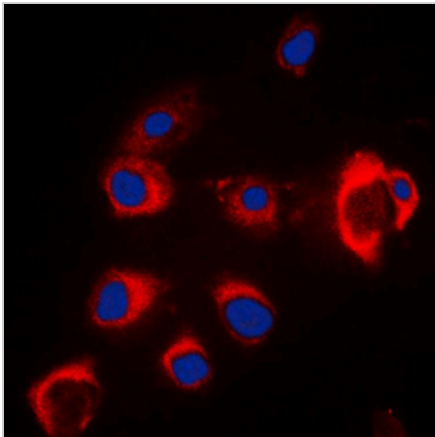
ZIP7 Rabbit Polyclonal Antibody

CAT. NO. APA07722

DATA



Western blot analysis of ZIP7 expression in mouse kidney (A), rat kidney (B) whole cell lysates. (Predicted band size: 50 kD; Observed band size: 50 kD)



Immunofluorescent analysis of ZIP7 staining in MCF7 cells. Formalin-fixed cells were permeabilized with 0.1% Triton X-100 in TBS for 5-10 minutes and blocked with 3% BSA-PBS for 30 minutes at room temperature. Cells were probed with the primary antibody in 3% BSA-PBS and incubated overnight at 4 °C in a humidified chamber. Cells were washed with PBST and incubated with a DyLight 594-conjugated secondary antibody (red) in PBS at room temperature in the dark. DAPI was used to stain the cell nuclei (blue).

STORAGE

Store at 4°C short term. For long term storage, store at -20°C, avoiding freeze/thaw cycles.

NOTE

For Research Use Only. Not for diagnostic, therapeutics, prophylactic or in vivo use.