

DATASHEET

ARHGEF5 Rabbit Polyclonal Antibody

CAT. NO. APA07725

KEY FEATURES

Target	ARHGEF5	Source / Host	Rabbit
Reactivity	Human, Mouse, Rat, Rat	Clonality	Polyclonal
Applications	WB, IHC, IF/ICC	Conjugation	Unconjugated
Form / Buffer	Liquid in 0.42% Potassium phosphate, 0.87% Sodium chloride, pH 7.3, 30% glycerol, and 0.01% sodium azide.		Storage at-20°C

BACKGROUND

Guanine nucleotide exchange factor which activates Rho GTPases . Strongly activates RHOA . Also strongly activates RHOB, weakly activates RHOC and RHOG and shows no effect on RHOD, RHOV, RHOQ or RAC1 . Involved in regulation of cell shape and actin cytoskeletal organization . Plays a role in actin organization by generating a loss of actin stress fibers and the formation of membrane ruffles and filopodia . Required for SRC-induced podosome formation . Involved in positive regulation of immature dendritic cell migration .

APPLICATION

To ensure optimal assay performance, AREX recommends conducting reagent titration tailored to each testing system for optimal detection results.

WB	1:500 - 1:1000
IHC	1:50 - 1:100
IF/ICC	1:50 - 1:200

*Results are sample-specific. Please refer to your local assay conditions and test parameters for reference.

PRODUCT OVERVIEW

Description	Rabbit polyclonal antibody to ARHGEF5
Specificity	Recognizes endogenous levels of ARHGEF5 protein.
Antibody Type	Primary antibody
Immunogen	KLH-conjugated synthetic peptide encompassing a sequence within the center region of human ARHGEF5. The exact sequence is proprietary.
Purification	The antibody was purified by immunogen affinity chromatography.
Molecular Weight	Predicted: 176 kD; Observed: 60 kD
Form/Buffer	Liquid in 0.42% Potassium phosphate, 0.87% Sodium chloride, pH 7.3, 30% glycerol, and 0.01% sodium azide.
Alternative Names	TIM; Rho guanine nucleotide exchange factor 5; Ephexin-3; Guanine nucleotide regulatory protein TIM; Oncogene TIM; Transforming immortalized mammary oncogene; p60 TIM
Gene Symbol	ARHGEF5
Entrez Gene	7984(Human)
SwissProt	Q12774(Human)

*AREX continuously optimizes our products. Webpage content may not reflect the latest updates. For inquiries, please contact info@arexbio.com or your local distributor.

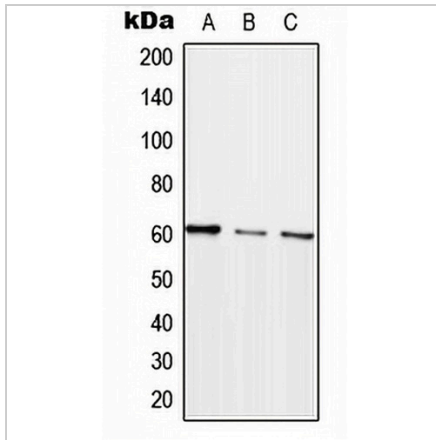
*Clone Number, Reactivity, Source/Host and Clonality can be found in the product name and Key Features section above.

DATASHEET

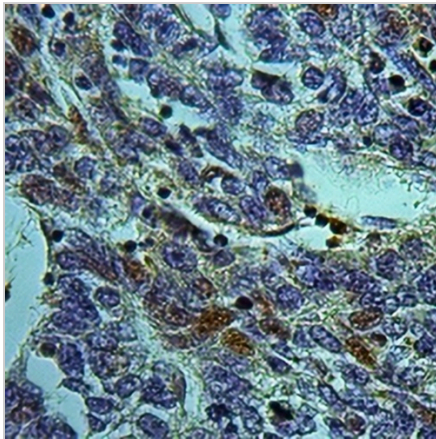
ARHGEF5 Rabbit Polyclonal Antibody

CAT. NO. APA07725

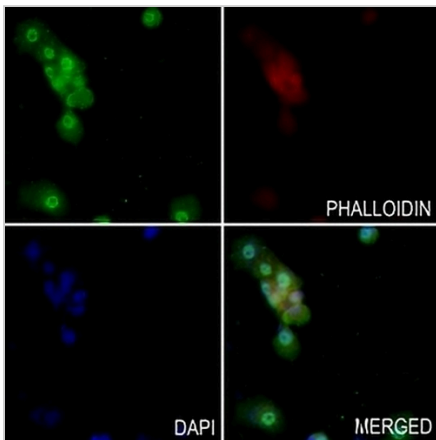
DATA



Western blot analysis of ARHGEF5 expression in HEK293T (A), SP2/0 (B), H9C2 (C) whole cell lysates. (Predicted band size: 176 kD; Observed band size: 60 kD)



Immunohistochemical analysis of ARHGEF5 staining in human liver cancer formalin fixed paraffin embedded tissue section. The section was pre-treated using heat mediated antigen retrieval with sodium citrate buffer (pH 6.0). The section was then incubated with the antibody at room temperature and detected using an HRP conjugated compact polymer system. DAB was used as the chromogen. The section was then counterstained with haematoxylin and mounted with DPX.



Immunofluorescent analysis of ARHGEF5 staining in HeLa cells. Formalin-fixed cells were permeabilized with 0.1% Triton X-100 in TBS for 5-10 minutes and blocked with 3% BSA-PBS for 30 minutes at room temperature. Cells were probed with the primary antibody in 3% BSA-PBS and incubated overnight at 4 °C in a humidified chamber. Cells were washed with PBST and incubated with a AREX® Fluor 488 -conjugated secondary antibody (green) in PBS at room temperature in the dark. Phalloidin - AREX® Fluor 594 was used to stain Actin filaments (red). DAPI was used to stain the cell nuclei (blue).

STORAGE

Store at 4°C short term. For long term storage, store at -20°C, avoiding freeze/thaw cycles.

NOTE

For Research Use Only. Not for diagnostic, therapeutics, prophylactic or in vivo use.