

## DATASHEET

# LZTR1 Rabbit Polyclonal Antibody

CAT. NO. APA07730

### KEY FEATURES

Target	LZTR1	Source / Host	Rabbit
Reactivity	Human, Mouse, Rat	Clonality	Polyclonal
Applications	WB, IF/ICC	Conjugation	Unconjugated
Form / Buffer	Liquid in 0.42% Potassium phosphate, 0.87% Sodium chloride, pH 7.3, 30% glycerol, and 0.01% sodium azide.		Storage at-20°C

### BACKGROUND

Substrate-specific adapter of a BCR (BTB-CUL3-RBX1) E3 ubiquitin-protein ligase complex that mediates ubiquitination of Ras (K-Ras/KRAS, N-Ras/NRAS and H-Ras/HRAS) E3 ubiquitin-protein ligase complex that mediates ubiquitination of Ras (K-Ras/KRAS, N-Ras/NRAS and H-Ras/HRAS) . Is a negative regulator of RAS-MAPK signaling that acts by controlling Ras levels and decreasing Ras association with membranes .

### APPLICATION

To ensure optimal assay performance, AREX recommends conducting reagent titration tailored to each testing system for optimal detection results.

WB	1:500 - 1:1000
IF/ICC	1:50 - 1:200

\*Results are sample-specific. Please refer to your local assay conditions and test parameters for reference.

### PRODUCT OVERVIEW

Description	Rabbit polyclonal antibody to LZTR1
Specificity	Recognizes endogenous levels of LZTR1 protein.
Antibody Type	Primary antibody
Immunogen	KLH-conjugated synthetic peptide encompassing a sequence within the center region of human LZTR1. The exact sequence is proprietary.
Purification	The antibody was purified by immunogen affinity chromatography.
Molecular Weight	Predicted: 94 kD; Observed: 94 kD
Form/Buffer	Liquid in 0.42% Potassium phosphate, 0.87% Sodium chloride, pH 7.3, 30% glycerol, and 0.01% sodium azide.
Alternative Names	TCFL2; Leucine-zipper-like transcriptional regulator 1; LZTR-1
Gene Symbol	LZTR1
Entrez Gene	8216(Human); 66863(Mouse)
SwissProt	Q8N653(Human); Q9CQ33(Mouse)

\*AREX continuously optimizes our products. Webpage content may not reflect the latest updates. For inquiries, please contact [info@arexbio.com](mailto:info@arexbio.com) or your local distributor.

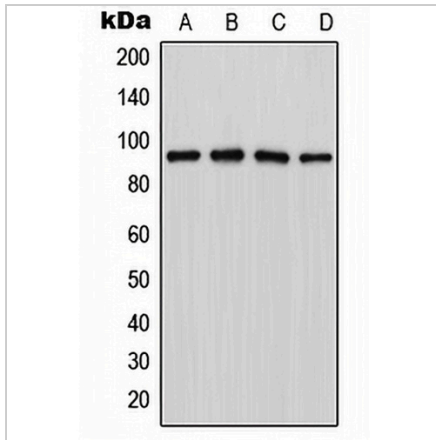
\*Clone Number, Reactivity, Source/Host and Clonality can be found in the product name and Key Features section above.

**DATASHEET**

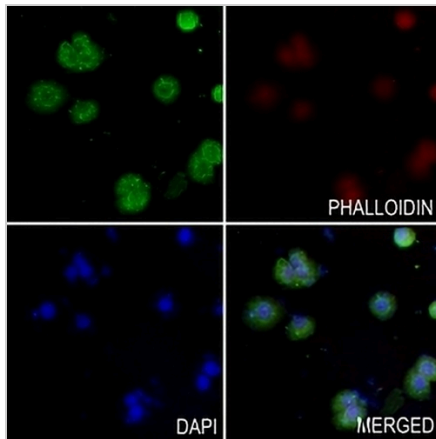
**LZTR1 Rabbit Polyclonal Antibody**

CAT. NO. APA07730

**DATA**



Western blot analysis of LZTR1 expression in Jurkat (A), MCF7 (B), NIH3T3 (C), PC12 (D) whole cell lysates. (Predicted band size: 94 kD; Observed band size: 94 kD)



Immunofluorescent analysis of LZTR1 staining in HeLa cells. Formalin-fixed cells were permeabilized with 0.1% Triton X-100 in TBS for 5-10 minutes and blocked with 3% BSA-PBS for 30 minutes at room temperature. Cells were probed with the primary antibody in 3% BSA-PBS and incubated overnight at 4 °C in a humidified chamber. Cells were washed with PBST and incubated with a AREX® Fluor 488 -conjugated secondary antibody (green) in PBS at room temperature in the dark. Phalloidin - AREX® Fluor 594 was used to stain Actin filaments (red). DAPI was used to stain the cell nuclei (blue).

**STORAGE**

Store at 4°C short term. For long term storage, store at -20°C, avoiding freeze/thaw cycles.

**NOTE**

For Research Use Only. Not for diagnostic, therapeutics, prophylactic or in vivo use.