

DATASHEET

SLC25A11 Rabbit Polyclonal Antibody

CAT. NO. APA07741

KEY FEATURES

Target	SLC25A11	Source / Host	Rabbit
Reactivity	Human, Mouse, Rat, Monkey	Clonality	Polyclonal
Applications	WB, IF/ICC	Conjugation	Unconjugated
Form / Buffer	Liquid in 0.42% Potassium phosphate, 0.87% Sodium chloride, pH 7.3, 30% glycerol, and 0.01% sodium azide.		Storage at-20°C

BACKGROUND

Catalyzes the transport of 2-oxoglutarate (alpha-oxoglutarate) across the inner mitochondrial membrane in an electroneutral exchange for malate across the inner mitochondrial membrane in an electroneutral exchange for malate . Can also exchange 2-oxoglutarate for other dicarboxylic acids such as malonate, succinate, maleate and oxaloacetate, although with lower affinity . Substrate exchange across the membrane occurs consecutively with one substrate being transported first, then dissociating from the substrate binding site before the second substrate binds for transport in the opposite direction . Does not transport glutathione .

APPLICATION

To ensure optimal assay performance, AREX recommends conducting reagent titration tailored to each testing system for optimal detection results.

WB	1:500 - 1:1000
IF/ICC	1:50 - 1:200

*Results are sample-specific. Please refer to your local assay conditions and test parameters for reference.

PRODUCT OVERVIEW

Description	Rabbit polyclonal antibody to SLC25A11
Specificity	Recognizes endogenous levels of SLC25A11 protein.
Antibody Type	Primary antibody
Immunogen	KLH-conjugated synthetic peptide encompassing a sequence within the center region of human SLC25A11. The exact sequence is proprietary.
Purification	The antibody was purified by immunogen affinity chromatography.
Molecular Weight	Predicted: 34 kD; Observed: 34; 28 kD
Form/Buffer	Liquid in 0.42% Potassium phosphate, 0.87% Sodium chloride, pH 7.3, 30% glycerol, and 0.01% sodium azide.
Alternative Names	SLC20A4; Mitochondrial 2-oxoglutarate/malate carrier protein; OGCP; Solute carrier family 25 member 11
Gene Symbol	SLC25A11
Entrez Gene	8402(Human); 67863(Mouse); 64201(Rat)
SwissProt	Q02978(Human); Q9CR62(Mouse); P97700(Rat)

*AREX continuously optimizes our products. Webpage content may not reflect the latest updates. For inquiries, please contact info@arexbio.com or your local distributor.

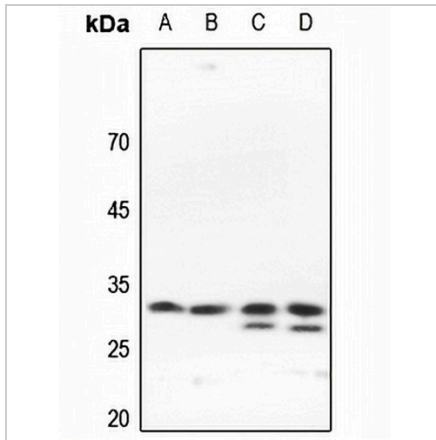
*Clone Number, Reactivity, Source/Host and Clonality can be found in the product name and Key Features section above.

DATASHEET

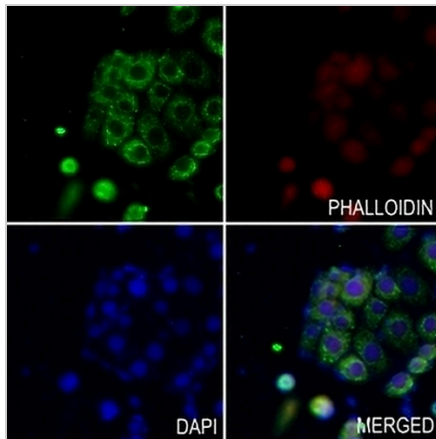
SLC25A11 Rabbit Polyclonal Antibody

CAT. NO. APA07741

DATA



Western blot analysis of SLC25A11 expression in HEK293T (A), HeLa (B), rat kidney (C), rat spleen (D) whole cell lysates. (Predicted band size: 34 kD; Observed band size: 34; 28 kD)



Immunofluorescent analysis of SLC25A11 staining in HeLa cells. Formalin-fixed cells were permeabilized with 0.1% Triton X-100 in TBS for 5-10 minutes and blocked with 3% BSA-PBS for 30 minutes at room temperature. Cells were probed with the primary antibody in 3% BSA-PBS and incubated overnight at 4 °C in a humidified chamber. Cells were washed with PBST and incubated with a AREX® Fluor 488 -conjugated secondary antibody (green) in PBS at room temperature in the dark. Phalloidin - AREX® Fluor 594 was used to stain Actin filaments (red). DAPI was used to stain the cell nuclei (blue).

STORAGE

Store at 4°C short term. For long term storage, store at -20°C, avoiding freeze/thaw cycles.

NOTE

For Research Use Only. Not for diagnostic, therapeutics, prophylactic or in vivo use.