

DATASHEET

EEA1 Rabbit Polyclonal Antibody

CAT. NO. APA07742

KEY FEATURES

Target	EEA1	Source / Host	Rabbit
Reactivity	Human, Mouse, Rat, Monkey, Pig	Clonality	Polyclonal
Applications	WB	Conjugation	Unconjugated
Form / Buffer	Liquid in 0.42% Potassium phosphate, 0.87% Sodium chloride, pH 7.3, 30% glycerol, and 0.01% sodium azide.		Storage at -20°C

BACKGROUND

Binds phospholipid vesicles containing phosphatidylinositol 3-phosphate and participates in endosomal trafficking.

APPLICATION

To ensure optimal assay performance, AREX recommends conducting reagent titration tailored to each testing system for optimal detection results.

WB	1:500 - 1:1000
----	----------------

*Results are sample-specific. Please refer to your local assay conditions and test parameters for reference.

PRODUCT OVERVIEW

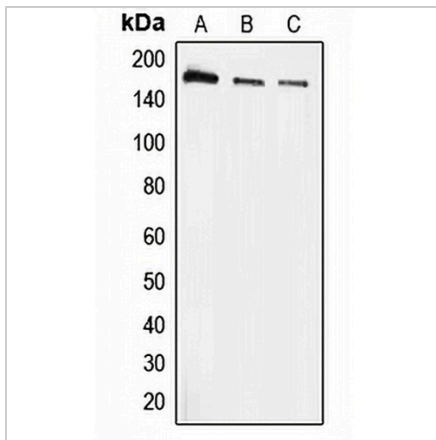
Description	Rabbit polyclonal antibody to EEA1
Specificity	Recognizes endogenous levels of EEA1 protein.
Antibody Type	Primary antibody
Immunogen	KLH-conjugated synthetic peptide encompassing a sequence within the N-term region of human EEA1. The exact sequence is proprietary.
Purification	The antibody was purified by immunogen affinity chromatography.
Molecular Weight	Predicted: 162 kD; Observed: 162 kD
Form/Buffer	Liquid in 0.42% Potassium phosphate, 0.87% Sodium chloride, pH 7.3, 30% glycerol, and 0.01% sodium azide.
Alternative Names	ZFYVE2; Early endosome antigen 1; Endosome-associated protein p162; Zinc finger FYVE domain-containing protein 2
Gene Symbol	EEA1
Entrez Gene	8411(Human); 216238(Mouse)
SwissProt	Q15075(Human); Q8BL66(Mouse)

*AREX continuously optimizes our products. Webpage content may not reflect the latest updates. For inquiries, please contact info@arexbio.com or your local distributor.

*Clone Number, Reactivity, Source/Host and Clonality can be found in the product name and Key Features section above.

DATASHEET**EEA1 Rabbit Polyclonal Antibody**

CAT. NO. APA07742

DATA

Western blot analysis of EEA1 expression in A431 (A), HeLa (B), THP1 (C) whole cell lysates. (Predicted band size: 162 kD; Observed band size: 162 kD)

STORAGE

Store at 4°C short term. For long term storage, store at -20°C, avoiding freeze/thaw cycles.

NOTE

For Research Use Only. Not for diagnostic, therapeutics, prophylactic or in vivo use.