

DATASHEET

FOXN1 Rabbit Polyclonal Antibody

CAT. NO. APA07746

KEY FEATURES

Target	FOXN1	Source / Host	Rabbit
Reactivity	Human, Mouse, Rat	Clonality	Polyclonal
Applications	WB	Conjugation	Unconjugated
Form / Buffer	Liquid in 0.42% Potassium phosphate, 0.87% Sodium chloride, pH 7.3, 30% glycerol, and 0.01% sodium azide.		Storage at -20°C

BACKGROUND

Transcriptional regulator which regulates the development, differentiation, and function of thymic epithelial cells (TECs) both in the prenatal and postnatal thymus. Acts as a master regulator of the TECs lineage development and is required from the onset of differentiation in progenitor TECs in the developing fetus to the final differentiation steps through which TECs mature to acquire their full functionality. Regulates, either directly or indirectly the expression of a variety of genes that mediate diverse aspects of thymus development and function, including MHC Class II, DLL4, CCL25, CTSL, CD40 and PAX1. Regulates the differentiation of the immature TECs into functional cortical TECs (cTECs) and medullary TECs (mTECs).

APPLICATION

To ensure optimal assay performance, AREX recommends conducting reagent titration tailored to each testing system for optimal detection results.

WB	1:500 - 1:1000
----	----------------

*Results are sample-specific. Please refer to your local assay conditions and test parameters for reference.

PRODUCT OVERVIEW

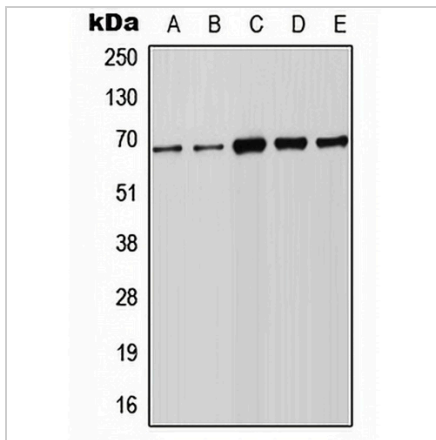
Description	Rabbit polyclonal antibody to FOXN1
Specificity	Recognizes endogenous levels of FOXN1 protein.
Antibody Type	Primary antibody
Immunogen	KLH-conjugated synthetic peptide encompassing a sequence within the center region of human FOXN1. The exact sequence is proprietary.
Purification	The antibody was purified by immunogen affinity chromatography.
Molecular Weight	Predicted: 68 kD; Observed: 69 kD
Form/Buffer	Liquid in 0.42% Potassium phosphate, 0.87% Sodium chloride, pH 7.3, 30% glycerol, and 0.01% sodium azide.
Alternative Names	RONU; WHN; Forkhead box protein N1; Winged-helix transcription factor nude
Gene Symbol	FOXN1
Entrez Gene	8456(Human); 15218(Mouse)
SwissProt	O15353(Human); Q61575(Mouse)

*AREX continuously optimizes our products. Webpage content may not reflect the latest updates. For inquiries, please contact info@arexbio.com or your local distributor.

*Clone Number, Reactivity, Source/Host and Clonality can be found in the product name and Key Features section above.

DATASHEET**FOXN1 Rabbit Polyclonal Antibody**

CAT. NO. APA07746

DATA

Western blot analysis of FOXN1 expression in Raji (A), HeLa (B), A549 (C), NIH3T3 (D), PC12 (E) whole cell lysates. (Predicted band size: 68 kD; Observed band size: 69 kD)

STORAGE

Store at 4°C short term. For long term storage, store at -20°C, avoiding freeze/thaw cycles.

NOTE

For Research Use Only. Not for diagnostic, therapeutics, prophylactic or in vivo use.