

DATASHEET
MRCK alpha Rabbit Polyclonal Antibody
CAT. NO. APA07748
KEY FEATURES

Target	MRCK alpha	Source / Host	Rabbit
Reactivity	Human, Mouse, Rat	Clonality	Polyclonal
Applications	WB, IF/ICC	Conjugation	Unconjugated
Form / Buffer	Liquid in 0.42% Potassium phosphate, 0.87% Sodium chloride, pH 7.3, 30% glycerol, and 0.01% sodium azide.	Storage	at-20°C

BACKGROUND

Serine/threonine-protein kinase which is an important downstream effector of CDC42 and plays a role in the regulation of cytoskeleton reorganization and cell migration . Regulates actin cytoskeletal reorganization via phosphorylation of PPP1R12C and MYL9/MLC2 . In concert with MYO18A and LURAP1, is involved in modulating lamellar actomyosin retrograde flow that is crucial to cell protrusion and migration . Phosphorylates: PPP1R12A, LIMK1 and LIMK2 . May play a role in TFRC-mediated iron uptake . In concert with FAM89B/LRAP25 mediates the targeting of LIMK1 to the lamellipodium resulting in its activation and subsequent phosphorylation of CFL1 which is important for lamellipodial F-actin regulation .

APPLICATION

To ensure optimal assay performance, AREX recommends conducting reagent titration tailored to each testing system for optimal detection results.

WB	1:500 - 1:1000
IF/ICC	1:50 - 1:200

*Results are sample-specific. Please refer to your local assay conditions and test parameters for reference.

PRODUCT OVERVIEW

Description	Rabbit polyclonal antibody to MRCK alpha
Specificity	Recognizes endogenous levels of MRCK alpha protein.
Antibody Type	Primary antibody
Immunogen	KLH-conjugated synthetic peptide encompassing a sequence within the center region of human MRCK alpha. The exact sequence is proprietary.
Purification	The antibody was purified by immunogen affinity chromatography.
Molecular Weight	Predicted: 197 kD; Observed: 186 kD
Form/Buffer	Liquid in 0.42% Potassium phosphate, 0.87% Sodium chloride, pH 7.3, 30% glycerol, and 0.01% sodium azide.
Alternative Names	KIAA0451; Serine/threonine-protein kinase MRCK alpha; CDC42-binding protein kinase alpha; DMPK-like alpha; Myotonic dystrophy kinase-related CDC42-binding kinase alpha; MRCK alpha; Myotonic dystrophy protein kinase-like alpha
Gene Symbol	CDC42BPA
Entrez Gene	8476(Human); 226751(Mouse); 114116(Rat)
SwissProt	Q5VT25(Human); Q3UU96(Mouse); O54874(Rat)

*AREX continuously optimizes our products. Webpage content may not reflect the latest updates. For inquiries, please contact info@arexbio.com or your local distributor.

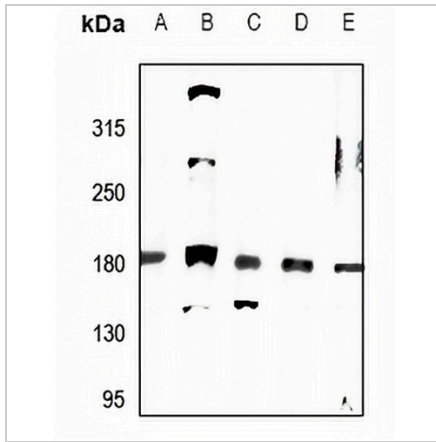
*Clone Number, Reactivity, Source/Host and Clonality can be found in the product name and Key Features section above.

DATASHEET

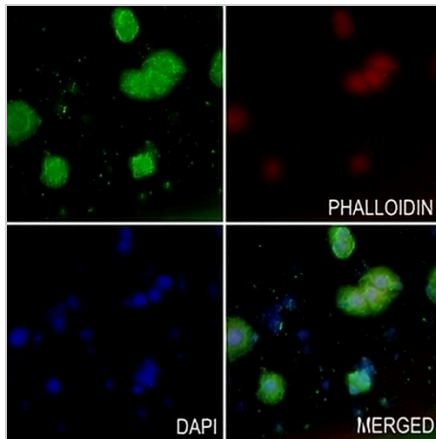
MRCK alpha Rabbit Polyclonal Antibody

CAT. NO. APA07748

DATA



Western blot analysis of MRCK alpha expression in C6 (A), BV2 (B), HEK293T (C), Panc1 (D), U87MG (E) whole cell lysates. (Predicted band size: 197 kD; Observed band size: 186 kD)



Immunofluorescent analysis of MRCK alpha staining in HeLa cells. Formalin-fixed cells were permeabilized with 0.1% Triton X-100 in TBS for 5-10 minutes and blocked with 3% BSA-PBS for 30 minutes at room temperature. Cells were probed with the primary antibody in 3% BSA-PBS and incubated overnight at 4 °C in a humidified chamber. Cells were washed with PBST and incubated with a AREX® Fluor 488 -conjugated secondary antibody (green) in PBS at room temperature in the dark. Phalloidin - AREX® Fluor 594 was used to stain Actin filaments (red). DAPI was used to stain the cell nuclei (blue).

STORAGE

Store at 4°C short term. For long term storage, store at -20°C, avoiding freeze/thaw cycles.

NOTE

For Research Use Only. Not for diagnostic, therapeutics, prophylactic or in vivo use.