

DATASHEET

PEX3 Rabbit Polyclonal Antibody

CAT. NO. APA07752

KEY FEATURES

Target	PEX3	Source / Host	Rabbit
Reactivity	Human, Mouse, Rat, Bovine, Monkey	Clonality	Polyclonal
Applications	WB, IHC	Conjugation	Unconjugated
Form / Buffer	Liquid in 0.42% Potassium phosphate, 0.87% Sodium chloride, pH 7.3, 30% glycerol, and 0.01% sodium azide.		Storage at -20°C

BACKGROUND

Involved in peroxisome biosynthesis and integrity. Assembles membrane vesicles before the matrix proteins are translocated. As a docking factor for PEX19, is necessary for the import of peroxisomal membrane proteins in the peroxisomes.

APPLICATION

To ensure optimal assay performance, AREX recommends conducting reagent titration tailored to each testing system for optimal detection results.

WB	1:500 - 1:1000
IHC	1:50 - 1:100

*Results are sample-specific. Please refer to your local assay conditions and test parameters for reference.

PRODUCT OVERVIEW

Description	Rabbit polyclonal antibody to PEX3
Specificity	Recognizes endogenous levels of PEX3 protein.
Antibody Type	Primary antibody
Immunogen	KLH-conjugated synthetic peptide encompassing a sequence within the N-term region of human PEX3. The exact sequence is proprietary.
Purification	The antibody was purified by immunogen affinity chromatography.
Molecular Weight	Predicted: 42 kD; Observed: 45 kD
Form/Buffer	Liquid in 0.42% Potassium phosphate, 0.87% Sodium chloride, pH 7.3, 30% glycerol, and 0.01% sodium azide.
Alternative Names	Peroxisomal biogenesis factor 3; Peroxin-3; Peroxisomal assembly protein PEX3
Gene Symbol	PEX3
Entrez Gene	8504(Human); 56535(Mouse); 83519(Rat)
SwissProt	P56589(Human); Q9QXY9(Mouse); Q9JJK4(Rat)

*AREX continuously optimizes our products. Webpage content may not reflect the latest updates. For inquiries, please contact info@arexbio.com or your local distributor.

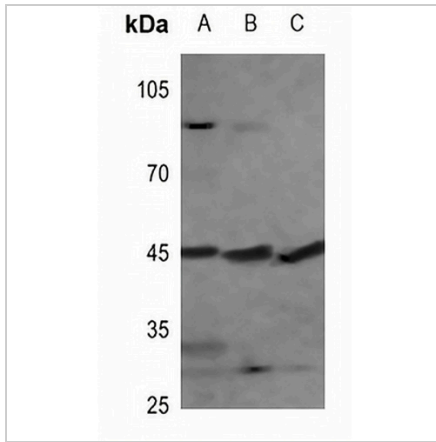
*Clone Number, Reactivity, Source/Host and Clonality can be found in the product name and Key Features section above.

DATASHEET

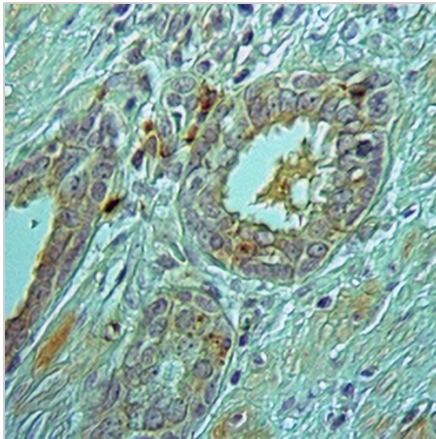
PEX3 Rabbit Polyclonal Antibody

CAT. NO. APA07752

DATA



Western blot analysis of PEX3 expression in DLD (A), mouse kidney (B), mouse testis (C) whole cell lysates. (Predicted band size: 42 kD; Observed band size: 45 kD)



Immunohistochemical analysis of PEX3 staining in human prostate formalin fixed paraffin embedded tissue section. The section was pre-treated using heat mediated antigen retrieval with sodium citrate buffer (pH 6.0). The section was then incubated with the antibody at room temperature and detected using an HRP conjugated compact polymer system. DAB was used as the chromogen. The section was then counterstained with haematoxylin and mounted with DPX.

STORAGE

Store at 4°C short term. For long term storage, store at -20°C, avoiding freeze/thaw cycles.

NOTE

For Research Use Only. Not for diagnostic, therapeutics, prophylactic or in vivo use.