

DATASHEET

CHST1 Rabbit Polyclonal Antibody

CAT. NO. APA07760

KEY FEATURES

Target	CHST1	Source / Host	Rabbit
Reactivity	Human, Mouse, Rat, Bovine, Dog	Clonality	Polyclonal
Applications	WB	Conjugation	Unconjugated
Form / Buffer	Liquid in 0.42% Potassium phosphate, 0.87% Sodium chloride, pH 7.3, 30% glycerol, and 0.01% sodium azide.		Storage at -20°C

BACKGROUND

Sulfotransferase that utilizes 3'-phospho-5'-adenylyl sulfate (PAPS) as sulfonate donor to catalyze the transfer of sulfate to position 6 of internal galactose (Gal) residues of keratan. Cooperates with B4GALT4 and B3GNT7 glycosyltransferases and CHST6 sulfotransferase to construct and elongate disulfated disaccharide unit [->3(6-sulfoGalbeta)1->4(6-sulfoGlcNAcbeta)1->] within keratan sulfate polymer as sulfonate donor to catalyze the transfer of sulfate to position 6 of internal galactose (Gal) residues of keratan. Cooperates with B4GALT4 and B3GNT7 glycosyltransferases and CHST6 sulfotransferase to construct and elongate disulfated disaccharide unit [->3(6-sulfoGalbeta)1->4(6-sulfoGlcNAcbeta)1->] within keratan sulfate polymer .

APPLICATION

To ensure optimal assay performance, AREX recommends conducting reagent titration tailored to each testing system for optimal detection results.

WB	1:500 - 1:1000
----	----------------

*Results are sample-specific. Please refer to your local assay conditions and test parameters for reference.

PRODUCT OVERVIEW

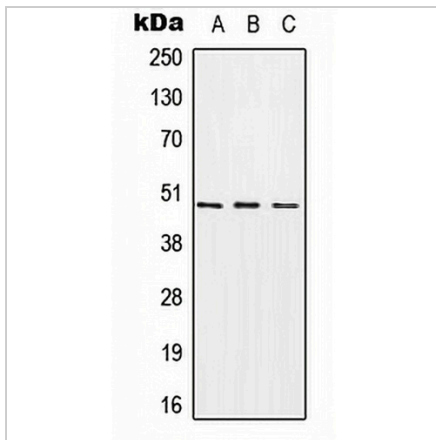
Description	Rabbit polyclonal antibody to CHST1
Specificity	Recognizes endogenous levels of CHST1 protein.
Antibody Type	Primary antibody
Immunogen	KLH-conjugated synthetic peptide encompassing a sequence within the center region of human CHST1. The exact sequence is proprietary.
Purification	The antibody was purified by immunogen affinity chromatography.
Molecular Weight	Predicted: 46 kD; Observed: 47 kD
Form/Buffer	Liquid in 0.42% Potassium phosphate, 0.87% Sodium chloride, pH 7.3, 30% glycerol, and 0.01% sodium azide.
Alternative Names	Carbohydrate sulfotransferase 1; Galactose/N-acetylglucosamine/N-acetylglucosamine 6-O-sulfotransferase 1; GST-1; Keratan sulfate Gal-6 sulfotransferase; KS6ST; KSGal6ST; KSST
Gene Symbol	CHST1
Entrez Gene	8534(Human); 76969(Mouse); 295934(Rat)
SwissProt	O43916(Human); Q9EQC0(Mouse); Q5RJQ0(Rat)

*AREX continuously optimizes our products. Webpage content may not reflect the latest updates. For inquiries, please contact info@arexbio.com or your local distributor.

*Clone Number, Reactivity, Source/Host and Clonality can be found in the product name and Key Features section above.

DATASHEET**CHST1 Rabbit Polyclonal Antibody**

CAT. NO. APA07760

DATA

Western blot analysis of CHST1 expression in A549 (A), Raw264.7 (B), PC12 (C) whole cell lysates. (Predicted band size: 46 kD; Observed band size: 47 kD)

STORAGE

Store at 4°C short term. For long term storage, store at -20°C, avoiding freeze/thaw cycles.

NOTE

For Research Use Only. Not for diagnostic, therapeutics, prophylactic or in vivo use.