

**DATASHEET**

**PRPF18 Rabbit Polyclonal Antibody**

CAT. NO. APA07763

**KEY FEATURES**

Target	PRPF18	Source / Host	Rabbit
Reactivity	Human, Mouse, Rat, Bovine, Monkey	Clonality	Polyclonal
Applications	WB	Conjugation	Unconjugated
Form / Buffer	Liquid in 0.42% Potassium phosphate, 0.87% Sodium chloride, pH 7.3, 30% glycerol, and 0.01% sodium azide.		Storage at -20°C

**BACKGROUND**

Participates in the second step of pre-mRNA splicing.

**APPLICATION**

To ensure optimal assay performance, AREX recommends conducting reagent titration tailored to each testing system for optimal detection results.

WB	1:500 - 1:1000
----	----------------

\*Results are sample-specific. Please refer to your local assay conditions and test parameters for reference.

**PRODUCT OVERVIEW**

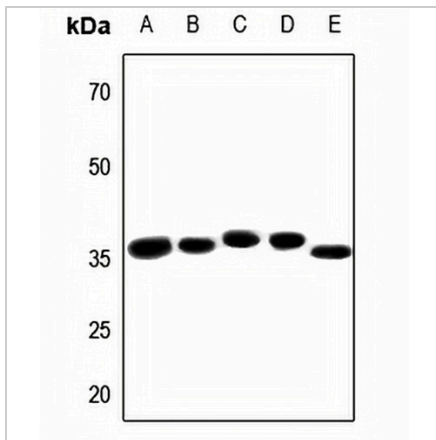
Description	Rabbit polyclonal antibody to PRPF18
Specificity	Recognizes endogenous levels of PRPF18 protein.
Antibody Type	Primary antibody
Immunogen	KLH-conjugated synthetic peptide encompassing a sequence within the center region of human PRPF18. The exact sequence is proprietary.
Purification	The antibody was purified by immunogen affinity chromatography.
Molecular Weight	Predicted: 39 kD; Observed: 40 kD
Form/Buffer	Liquid in 0.42% Potassium phosphate, 0.87% Sodium chloride, pH 7.3, 30% glycerol, and 0.01% sodium azide.
Alternative Names	HPRP18; Pre-mRNA-splicing factor 18; PRP18 homolog; hPRP18
Gene Symbol	PRPF18
Entrez Gene	8559(Human); 67229(Mouse); 171552(Rat)
SwissProt	Q99633(Human); Q8BM39(Mouse); Q9JKB8(Rat)

\*AREX continuously optimizes our products. Webpage content may not reflect the latest updates. For inquiries, please contact [info@arexbio.com](mailto:info@arexbio.com) or your local distributor.

\*Clone Number, Reactivity, Source/Host and Clonality can be found in the product name and Key Features section above.

**DATASHEET****PRPF18 Rabbit Polyclonal Antibody**

CAT. NO. APA07763

**DATA**

Western blot analysis of PRPF18 expression in HEK293T (A), HeLa (B), mouse kidney (C), mouse lung (D), rat kidney (E) whole cell lysates. (Predicted band size: 39 kD; Observed band size: 40 kD)

**STORAGE**

Store at 4°C short term. For long term storage, store at -20°C, avoiding freeze/thaw cycles.

**NOTE**

For Research Use Only. Not for diagnostic, therapeutics, prophylactic or in vivo use.