

**DATASHEET**

**EDG6 Rabbit Polyclonal Antibody**

CAT. NO. APA07771

**KEY FEATURES**

Target	EDG6	Source / Host	Rabbit
Reactivity	Human, Mouse	Clonality	Polyclonal
Applications	WB, IHC, IF/ICC	Conjugation	Unconjugated
Form / Buffer	Liquid in 0.42% Potassium phosphate, 0.87% Sodium chloride, pH 7.3, 30% glycerol, and 0.01% sodium azide.		Storage at -20°C

**BACKGROUND**

G protein-coupled receptor highly expressed in immune cells, where it regulates immune response and cytokine production. Functions as a receptor for the lysosphingolipid sphingosine-1-phosphate (S1P). Upon S1P binding, promotes regulatory T-cell differentiation and enhances fatty acid oxidation, through activation of the NRF2/PPARA signaling pathway . Modulates also M1 macrophage activation through interaction with FPR2 and the JNK signaling, contributing to the inflammatory response . In addition, facilitates early neutrophil mobilization and vascular activation during inflammation, promoting lymphocyte recruitment to draining lymph nodes and supporting the development of germinal centers for an effective adaptive immune response .

**APPLICATION**

To ensure optimal assay performance, AREX recommends conducting reagent titration tailored to each testing system for optimal detection results.

WB	1:500 - 1:1000
IHC	1:50 - 1:100
IF/ICC	1:50 - 1:200

\*Results are sample-specific. Please refer to your local assay conditions and test parameters for reference.

**PRODUCT OVERVIEW**

Description	Rabbit polyclonal antibody to EDG6
Specificity	Recognizes endogenous levels of EDG6 protein.
Antibody Type	Primary antibody
Immunogen	KLH-conjugated synthetic peptide encompassing a sequence within the C-term region of human EDG6. The exact sequence is proprietary.
Purification	The antibody was purified by immunogen affinity chromatography.
Molecular Weight	Predicted: 41 kD; Observed: 48 kD
Form/Buffer	Liquid in 0.42% Potassium phosphate, 0.87% Sodium chloride, pH 7.3, 30% glycerol, and 0.01% sodium azide.
Alternative Names	EDG6; Sphingosine 1-phosphate receptor 4; S1P receptor 4; S1P4; Endothelial differentiation G-protein coupled receptor 6; Sphingosine 1-phosphate receptor Edg-6; S1P receptor Edg-6
Gene Symbol	S1PR4
Entrez Gene	8698(Human)
SwissProt	O95977(Human)

\*AREX continuously optimizes our products. Webpage content may not reflect the latest updates. For inquiries, please contact [info@arexbio.com](mailto:info@arexbio.com) or your local distributor.

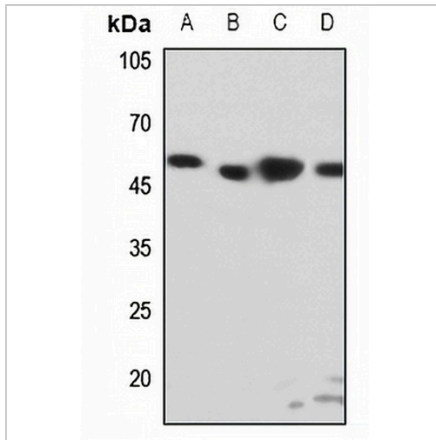
\*Clone Number, Reactivity, Source/Host and Clonality can be found in the product name and Key Features section above.

**DATASHEET**

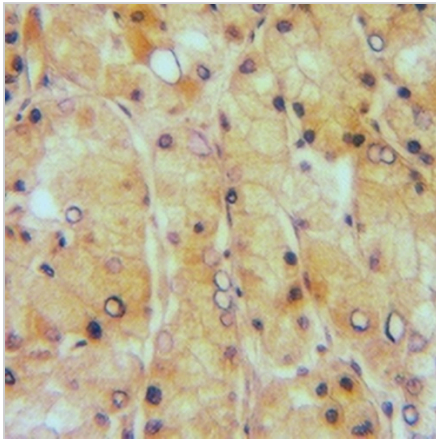
**EDG6 Rabbit Polyclonal Antibody**

CAT. NO. APA07771

**DATA**



Western blot analysis of EDG6 expression in HEK293T (A), HeLa (B), HepG2 (C), mouse spleen (D) whole cell lysates. (Predicted band size: 41 kD; Observed band size: 48 kD)



Immunohistochemical analysis of EDG6 staining in human liver cancer formalin fixed paraffin embedded tissue section. The section was pre-treated using heat mediated antigen retrieval with sodium citrate buffer (pH 6.0). The section was then incubated with the antibody at room temperature and detected using an HRP conjugated compact polymer system. DAB was used as the chromogen. The section was then counterstained with haematoxylin and mounted with DPX.



Immunofluorescent analysis of EDG6 staining in HepG2 cells. Formalin-fixed cells were permeabilized with 0.1% Triton X-100 in TBS for 5-10 minutes and blocked with 3% BSA-PBS for 30 minutes at room temperature. Cells were probed with the primary antibody in 3% BSA-PBS and incubated overnight at 4 °C in a hidified chamber. Cells were washed with PBST and incubated with a AREX® Fluor 594-conjugated secondary antibody (red) in PBS at room temperature in the dark.

**STORAGE**

Store at 4°C short term. For long term storage, store at -20°C, avoiding freeze/thaw cycles.

**NOTE**

For Research Use Only. Not for diagnostic, therapeutics, prophylactic or in vivo use.