

DATASHEET

B3GALT4 Rabbit Polyclonal Antibody

CAT. NO. APA07772

KEY FEATURES

Target	B3GALT4	Source / Host	Rabbit
Reactivity	Human	Clonality	Polyclonal
Applications	WB, IHC, IF/ICC	Conjugation	Unconjugated
Form / Buffer	Liquid in 0.42% Potassium phosphate, 0.87% Sodium chloride, pH 7.3, 30% glycerol, and 0.01% sodium azide.		Storage at -20°C

BACKGROUND

Involved in GM1/GD1B/GA1 ganglioside biosynthesis.

APPLICATION

To ensure optimal assay performance, AREX recommends conducting reagent titration tailored to each testing system for optimal detection results.

WB	1:500 - 1:1000
IHC	1:50 - 1:100
IF/ICC	1:50 - 1:200

*Results are sample-specific. Please refer to your local assay conditions and test parameters for reference.

PRODUCT OVERVIEW

Description	Rabbit polyclonal antibody to B3GALT4
Specificity	Recognizes endogenous levels of B3GALT4 protein.
Antibody Type	Primary antibody
Immunogen	KLH-conjugated synthetic peptide encompassing a sequence within the center region of human B3GALT4. The exact sequence is proprietary.
Purification	The antibody was purified by immunogen affinity chromatography.
Molecular Weight	Predicted: 41 kD; Observed: 42 kD
Form/Buffer	Liquid in 0.42% Potassium phosphate, 0.87% Sodium chloride, pH 7.3, 30% glycerol, and 0.01% sodium azide.
Alternative Names	GALT4; Beta-1,3-galactosyltransferase 4; Beta-1,3-GalTase 4; Beta3Gal-T4; Beta3GalT4; GalT4; b3Gal-T4; Gal-T2; Ganglioside galactosyltransferase; UDP-galactose:beta-N-acetyl-galactosamine-beta-1,3-galactosyltransferase
Gene Symbol	B3GALT4
Entrez Gene	8705(Human)
SwissProt	O96024(Human)

*AREX continuously optimizes our products. Webpage content may not reflect the latest updates. For inquiries, please contact info@arexbio.com or your local distributor.

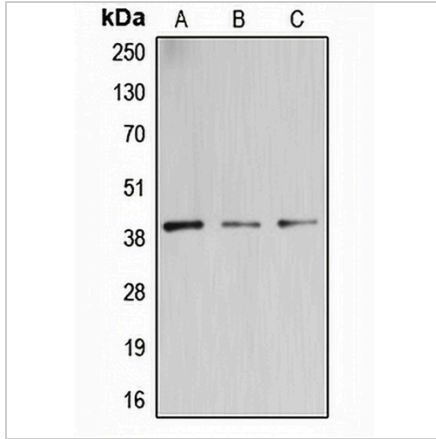
*Clone Number, Reactivity, Source/Host and Clonality can be found in the product name and Key Features section above.

DATASHEET

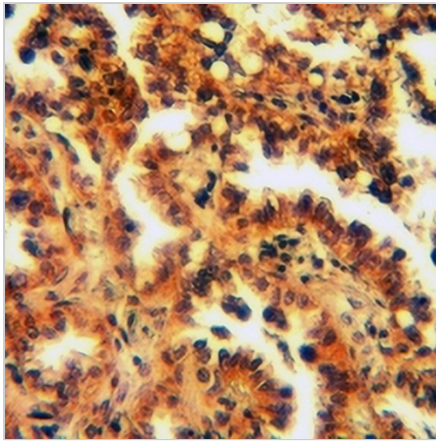
B3GALT4 Rabbit Polyclonal Antibody

CAT. NO. APA07772

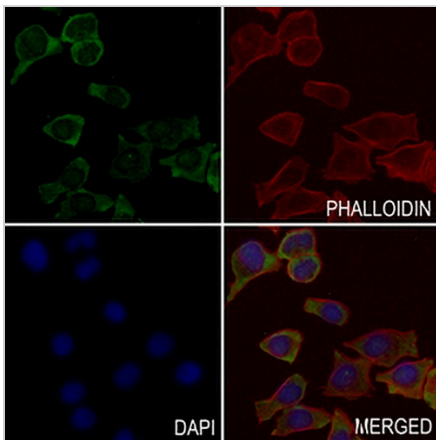
DATA



Western blot analysis of B3GALT4 expression in PC3 (A), Jurkat (B), U87MG (C) whole cell lysates. (Predicted band size: 41 kD; Observed band size: 42 kD)



Immunohistochemical analysis of B3GALT4 staining in human lung cancer formalin fixed paraffin embedded tissue section. The section was pre-treated using heat mediated antigen retrieval with sodium citrate buffer (pH 6.0). The section was then incubated with the antibody at room temperature and detected using an HRP conjugated compact polymer system. DAB was used as the chromogen. The section was then counterstained with haematoxylin and mounted with DPX.



Immunofluorescent analysis of B3GALT4 staining in MCF7 cells. Formalin-fixed cells were permeabilized with 0.1% Triton X-100 in TBS for 5-10 minutes and blocked with 3% BSA-PBS for 30 minutes at room temperature. Cells were probed with the primary antibody in 3% BSA-PBS and incubated overnight at 4 °C in a humidified chamber. Cells were washed with PBST and incubated with a AREX® Fluor 488 -conjugated secondary antibody (green) in PBS at room temperature in the dark. Phalloidin - AREX® Fluor 594 was used to stain Actin filaments (red). DAPI was used to stain the cell nuclei (blue).

STORAGE

Store at 4°C short term. For long term storage, store at -20°C, avoiding freeze/thaw cycles.

NOTE

For Research Use Only. Not for diagnostic, therapeutics, prophylactic or in vivo use.