

DATASHEET

ADAM23 Rabbit Polyclonal Antibody

CAT. NO. APA07782

KEY FEATURES

Target	ADAM23	Source / Host	Rabbit
Reactivity	Human, Mouse, Rat, Bovine	Clonality	Polyclonal
Applications	WB	Conjugation	Unconjugated
Form / Buffer	Liquid in 0.42% Potassium phosphate, 0.87% Sodium chloride, pH 7.3, 30% glycerol, and 0.01% sodium azide.		Storage at-20°C

BACKGROUND

May play a role in cell-cell and cell-matrix interactions. This is a non-catalytic metalloprotease-like protein.

APPLICATION

To ensure optimal assay performance, AREX recommends conducting reagent titration tailored to each testing system for optimal detection results.

WB	1:500 - 1:1000
----	----------------

*Results are sample-specific. Please refer to your local assay conditions and test parameters for reference.

PRODUCT OVERVIEW

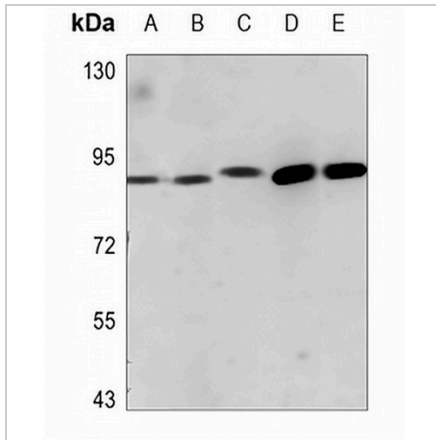
Description	Rabbit polyclonal antibody to ADAM23
Specificity	Recognizes endogenous levels of ADAM23 protein.
Antibody Type	Primary antibody
Immunogen	KLH-conjugated synthetic peptide encompassing a sequence within the C-term region of human ADAM23. The exact sequence is proprietary.
Purification	The antibody was purified by immunogen affinity chromatography.
Molecular Weight	Predicted: 91 kD; Observed: 92 kD
Form/Buffer	Liquid in 0.42% Potassium phosphate, 0.87% Sodium chloride, pH 7.3, 30% glycerol, and 0.01% sodium azide.
Alternative Names	MDC3; Disintegrin and metalloproteinase domain-containing protein 23; ADAM 23; Metalloproteinase-like, disintegrin-like, and cysteine-rich protein 3; MDC-3
Gene Symbol	ADAM23
Entrez Gene	8745(Human); 23792(Mouse)
SwissProt	O75077(Human); Q9R1V7(Mouse)

*AREX continuously optimizes our products. Webpage content may not reflect the latest updates. For inquiries, please contact info@arexbio.com or your local distributor.

*Clone Number, Reactivity, Source/Host and Clonality can be found in the product name and Key Features section above.

DATASHEET**ADAM23 Rabbit Polyclonal Antibody**

CAT. NO. APA07782

DATA

Western blot analysis of ADAM23 expression in HEK293T (A), H1792 (B), SGC7901 (C), mouse heart (D), rat heart (E) whole cell lysates. (Predicted band size: 91 kD; Observed band size: 92 kD)

STORAGE

Store at 4°C short term. For long term storage, store at -20°C, avoiding freeze/thaw cycles.

NOTE

For Research Use Only. Not for diagnostic, therapeutics, prophylactic or in vivo use.