

DATASHEET

RIOK3 Rabbit Polyclonal Antibody

CAT. NO. APA07783

KEY FEATURES

Target	RIOK3	Source / Host	Rabbit
Reactivity	Human, Mouse, Rat, Bovine, Monkey	Clonality	Polyclonal
Applications	WB, IHC	Conjugation	Unconjugated
Form / Buffer	Liquid in 0.42% Potassium phosphate, 0.87% Sodium chloride, pH 7.3, 30% glycerol, and 0.01% sodium azide.		Storage at -20°C

BACKGROUND

Serine/threonine-protein kinase involved in a ribosome quality control that takes place when ribosomes have stalled, leading to 18S non-functional rRNA decay and degradation of the 40S ribosomal subunit . Acts downstream of RNF10: specifically recognizes and binds RPS2/us5 and RPS3/us3 monoubiquitinated by RNF10, promoting degradation of the 40S ribosomal subunit in a kinase-dependent manner . The RNF10-RIOK3 ribosome quality control takes place in response to ribosome subunit imbalance or downstream the EIF2AK4/GCN2-mediated integrated stress response (ISR) . Also involved in regulation of type I interferon (IFN)-dependent immune response, possibly by acting as an adapter protein essential for the recruitment of TBK1 to IRF3 .

APPLICATION

To ensure optimal assay performance, AREX recommends conducting reagent titration tailored to each testing system for optimal detection results.

WB	1:500 - 1:1000
IHC	1:50 - 1:100

*Results are sample-specific. Please refer to your local assay conditions and test parameters for reference.

PRODUCT OVERVIEW

Description	Rabbit polyclonal antibody to RIOK3
Specificity	Recognizes endogenous levels of RIOK3 protein.
Antibody Type	Primary antibody
Immunogen	KLH-conjugated synthetic peptide encompassing a sequence within the center region of human RIOK3. The exact sequence is proprietary.
Purification	The antibody was purified by immunogen affinity chromatography.
Molecular Weight	Predicted: 59 kD; Observed: 59 kD
Form/Buffer	Liquid in 0.42% Potassium phosphate, 0.87% Sodium chloride, pH 7.3, 30% glycerol, and 0.01% sodium azide.
Alternative Names	SUDD; Serine/threonine-protein kinase RIO3; RIO kinase 3; sudD homolog
Gene Symbol	RIOK3
Entrez Gene	8780(Human); 66878(Mouse)
SwissProt	O14730(Human); Q9DBU3(Mouse)

*AREX continuously optimizes our products. Webpage content may not reflect the latest updates. For inquiries, please contact info@arexbio.com or your local distributor.

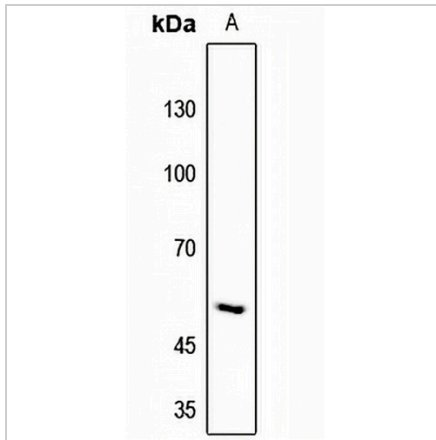
*Clone Number, Reactivity, Source/Host and Clonality can be found in the product name and Key Features section above.

DATASHEET

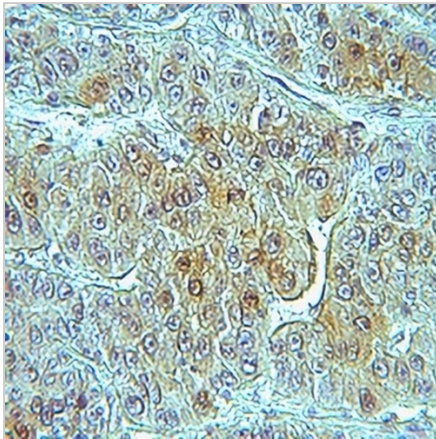
RIOK3 Rabbit Polyclonal Antibody

CAT. NO. APA07783

DATA



Western blot analysis of RIOK3 expression in HeLa (A) whole cell lysates. (Predicted band size: 59 kD; Observed band size: 59 kD)



Immunohistochemical analysis of RIOK3 staining in human liver cancer formalin fixed paraffin embedded tissue section. The section was pre-treated using heat mediated antigen retrieval with sodium citrate buffer (pH 6.0). The section was then incubated with the antibody at room temperature and detected using an HRP conjugated compact polymer system. DAB was used as the chromogen. The section was then counterstained with haematoxylin and mounted with DPX.

STORAGE

Store at 4°C short term. For long term storage, store at -20°C, avoiding freeze/thaw cycles.

NOTE

For Research Use Only. Not for diagnostic, therapeutics, prophylactic or in vivo use.