

**DATASHEET**
**TSC22 Rabbit Polyclonal Antibody**

CAT. NO. APA07793

**KEY FEATURES**

Target	TSC22	Source / Host	Rabbit
Reactivity	Human, Mouse, Rat, Bovine, Chicken, Monkey	Clonality	Polyclonal
Applications	WB, IHC, IF/ICC	Conjugation	Unconjugated
Form / Buffer	Liquid in 0.42% Potassium phosphate, 0.87% Sodium chloride, pH 7.3, 30% glycerol, and 0.01% sodium azide.		Storage at -20°C

**BACKGROUND**

Transcriptional repressor . Acts on the C-type natriuretic peptide (CNP) promoter . Acts to promote CASP3-mediated apoptosis . Positively regulates TGF-beta signaling by interacting with SMAD7 which inhibits binding of SMAD7 to TGFBR1, preventing recruitment of SMURF ubiquitin ligases to TGFBR1 and inhibiting SMURF-mediated ubiquitination and degradation of TGFBR1 . Contributes to enhancement of TGF-beta signaling by binding to and modulating the transcription activator activity of SMAD4 . Promotes TGF-beta-induced transcription of COL1A2; via its interaction with TFE3 at E-boxes in the gene proximal promoter . Plays a role in the repression of hematopoietic precursor cell growth .

**APPLICATION**

To ensure optimal assay performance, AREX recommends conducting reagent titration tailored to each testing system for optimal detection results.

WB	1:500 - 1:1000
IHC	1:100 - 1:200
IF/ICC	1:100 - 1:500

\*Results are sample-specific. Please refer to your local assay conditions and test parameters for reference.

**PRODUCT OVERVIEW**

Description	Rabbit polyclonal antibody to TSC22
Specificity	Recognizes endogenous levels of TSC22 protein.
Antibody Type	Primary antibody
Immunogen	KLH-conjugated synthetic peptide encompassing a sequence within the C-term region of human TSC22. The exact sequence is proprietary.
Purification	The antibody was purified by immunogen affinity chromatography.
Molecular Weight	Predicted: 109 kD; Observed: 20 kD
Form/Buffer	Liquid in 0.42% Potassium phosphate, 0.87% Sodium chloride, pH 7.3, 30% glycerol, and 0.01% sodium azide.
Alternative Names	KIAA1994; TGFBI4; TSC22; TSC22 domain family protein 1; Cerebral protein 2; Regulatory protein TSC-22; TGF-beta-stimulated clone 22 homolog; Transforming growth factor beta-1-induced transcript 4 protein
Gene Symbol	TSC22D1
Entrez Gene	8848(Human); 21807(Mouse); 498545(Rat)
SwissProt	Q15714(Human); P62500(Mouse); P62501(Rat)

\*AREX continuously optimizes our products. Webpage content may not reflect the latest updates. For inquiries, please contact [info@arexbio.com](mailto:info@arexbio.com) or your local distributor.

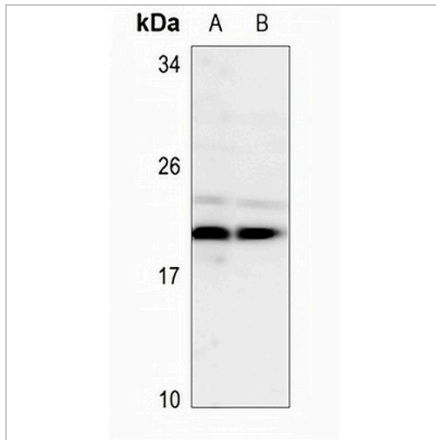
\*Clone Number, Reactivity, Source/Host and Clonality can be found in the product name and Key Features section above.

**DATASHEET**

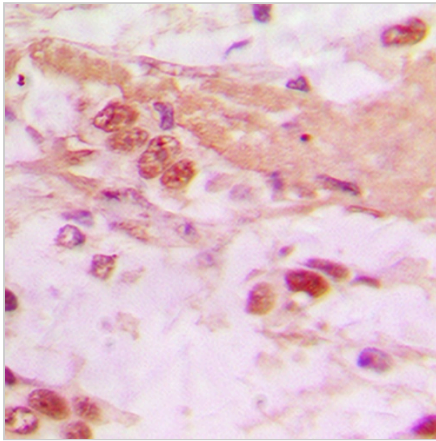
**TSC22 Rabbit Polyclonal Antibody**

CAT. NO. APA07793

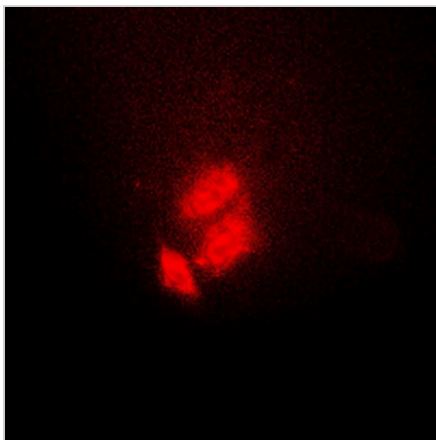
**DATA**



Western blot analysis of TSC22 expression in mouse liver (A), rat liver (B) whole cell lysates. (Predicted band size: 109 kD; Observed band size: 20 kD)



Immunohistochemical analysis of TSC22 staining in human lung cancer formalin fixed paraffin embedded tissue section. The section was pre-treated using heat mediated antigen retrieval with sodium citrate buffer (pH 6.0). The section was then incubated with the antibody at room temperature and detected using an HRP conjugated compact polymer system. DAB was used as the chromogen. The section was then counterstained with haematoxylin and mounted with DPX.



Immunofluorescent analysis of TSC22 staining in HeLa cells. Formalin-fixed cells were permeabilized with 0.1% Triton X-100 in TBS for 5-10 minutes and blocked with 3% BSA-PBS for 30 minutes at room temperature. Cells were probed with the primary antibody in 3% BSA-PBS and incubated overnight at 4 °C in a humidified chamber. Cells were washed with PBST and incubated with a DyLight 594-conjugated secondary antibody (red) in PBS at room temperature in the dark.

**STORAGE**

Store at 4°C short term. For long term storage, store at -20°C, avoiding freeze/thaw cycles.

**NOTE**

For Research Use Only. Not for diagnostic, therapeutics, prophylactic or in vivo use.