

DATASHEET

CDK5R1 p35 Rabbit Polyclonal Antibody

CAT. NO. APA07795

KEY FEATURES

| | | | |
|---------------|-----------------------------------------------------------------------------------------------------------|---------------|---------------------|
| Target | CDK5R1 p35 | Source / Host | Rabbit |
| Reactivity | Human, Mouse, Rat, Bovine, Zebrafish | Clonality | Polyclonal |
| Applications | WB, IHC, IF/ICC | Conjugation | Unconjugated |
| Form / Buffer | Liquid in 0.42% Potassium phosphate, 0.87% Sodium chloride, pH 7.3, 30% glycerol, and 0.01% sodium azide. | | Storage at -20°C |

BACKGROUND

p35 is a neuron specific activator of CDK5. The complex p35/CDK5 is required for neurite outgrowth and cortical lamination. Involved in dendritic spine morphogenesis by mediating the EFNA1-EPHA4 signaling. Activator of TPKII. The complex p35/CDK5 participates in the regulation of the circadian clock by modulating the function of CLOCK protein: phosphorylates CLOCK at 'Thr-451' and 'Thr-461' and regulates the transcriptional activity of the CLOCK-BMAL1 heterodimer in association with altered stability and subcellular distribution.

APPLICATION

To ensure optimal assay performance, AREX recommends conducting reagent titration tailored to each testing system for optimal detection results.

| | |
|--------|----------------|
| WB | 1:500 - 1:1000 |
| IHC | 1:50 - 1:100 |
| IF/ICC | 1:50 - 1:200 |

*Results are sample-specific. Please refer to your local assay conditions and test parameters for reference.

PRODUCT OVERVIEW

| | |
|-------------------|-------------------------------------------------------------------------------------------------------------------------------------------------|
| Description | Rabbit polyclonal antibody to CDK5R1 p35 |
| Specificity | Recognizes endogenous levels of CDK5R1 p35 protein. |
| Antibody Type | Primary antibody |
| Immunogen | KLH-conjugated synthetic peptide encompassing a sequence within the N-term region of human CDK5R1 p35. The exact sequence is proprietary. |
| Purification | The antibody was purified by immunogen affinity chromatography. |
| Molecular Weight | Predicted: 34 kD; Observed: 34 kD |
| Form/Buffer | Liquid in 0.42% Potassium phosphate, 0.87% Sodium chloride, pH 7.3, 30% glycerol, and 0.01% sodium azide. |
| Alternative Names | CDK5R; NCK5A; Cyclin-dependent kinase 5 activator 1; CDK5 activator 1; Cyclin-dependent kinase 5 regulatory subunit 1; TPKII regulatory subunit |
| Gene Symbol | CDK5R1 |
| Entrez Gene | 8851(Human); 12569(Mouse); 116671(Rat) |
| SwissProt | Q15078(Human); P61809(Mouse); P61810(Rat) |

*AREX continuously optimizes our products. Webpage content may not reflect the latest updates. For inquiries, please contact info@arexbio.com or your local distributor.

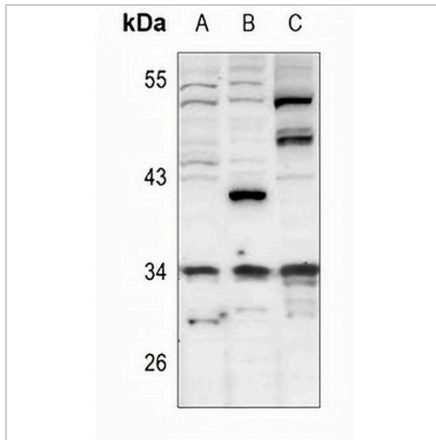
*Clone Number, Reactivity, Source/Host and Clonality can be found in the product name and Key Features section above.

DATASHEET

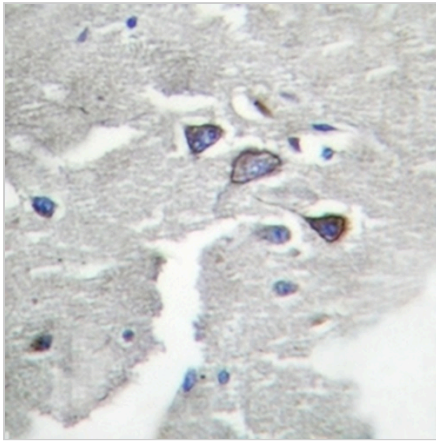
CDK5R1 p35 Rabbit Polyclonal Antibody

CAT. NO. APA07795

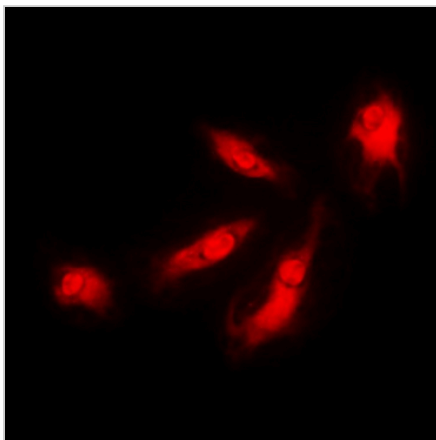
DATA



Western blot analysis of CDK5R1 p35 expression in U87MG (A), EC9706 (B), SHSY5Y (C) whole cell lysates. (Predicted band size: 34 kD; Observed band size: 34 kD)



Immunohistochemical analysis of CDK5R1 p35 staining in human brain formalin fixed paraffin embedded tissue section. The section was pre-treated using heat mediated antigen retrieval with sodium citrate buffer (pH 6.0). The section was then incubated with the antibody at room temperature and detected using an HRP conjugated compact polymer system. DAB was used as the chromogen. The section was then counterstained with haematoxylin and mounted with DPX.



Immunofluorescent analysis of CDK5R1 p35 staining in HeLa cells. Formalin-fixed cells were permeabilized with 0.1% Triton X-100 in TBS for 5-10 minutes and blocked with 3% BSA-PBS for 30 minutes at room temperature. Cells were probed with the primary antibody in 3% BSA-PBS and incubated overnight at 4 °C in a humidified chamber. Cells were washed with PBST and incubated with a DyLight 594-conjugated secondary antibody (red) in PBS at room temperature in the dark.

STORAGE

Store at 4°C short term. For long term storage, store at -20°C, avoiding freeze/thaw cycles.

NOTE

For Research Use Only. Not for diagnostic, therapeutics, prophylactic or in vivo use.