

**DATASHEET**

**ARHGEF1 Rabbit Polyclonal Antibody**

CAT. NO. APA07817

**KEY FEATURES**

Target	ARHGEF1	Source / Host	Rabbit
Reactivity	Human, Mouse, Rat	Clonality	Polyclonal
Applications	WB, IHC	Conjugation	Unconjugated
Form / Buffer	Liquid in 0.42% Potassium phosphate, 0.87% Sodium chloride, pH 7.3, 30% glycerol, and 0.01% sodium azide.		Storage at -20°C

**BACKGROUND**

Seems to play a role in the regulation of RhoA GTPase by guanine nucleotide-binding alpha-12 (GNA12) and alpha-13 (GNA13) subunits and alpha-13 (GNA13) subunits . Acts as a GTPase-activating protein (GAP) for GNA12 and GNA13, and as guanine nucleotide exchange factor (GEF) for RhoA GTPase . Activated G alpha 13/GNA13 stimulates the RhoGEF activity through interaction with the RGS-like domain . This GEF activity is inhibited by binding to activated GNA12 . Mediates angiotensin-2-induced RhoA activation . In lymphoid follicles, may trigger activation of GNA13 as part of S1PR2-dependent signaling pathway that leads to inhibition of germinal center (GC) B cell growth and migration outside the GC niche.

**APPLICATION**

To ensure optimal assay performance, AREX recommends conducting reagent titration tailored to each testing system for optimal detection results.

WB	1:500 - 1:1000
IHC	1:50 - 1:100

\*Results are sample-specific. Please refer to your local assay conditions and test parameters for reference.

**PRODUCT OVERVIEW**

Description	Rabbit polyclonal antibody to ARHGEF1
Specificity	Recognizes endogenous levels of ARHGEF1 protein.
Antibody Type	Primary antibody
Immunogen	KLH-conjugated synthetic peptide encompassing a sequence within the center region of human ARHGEF1. The exact sequence is proprietary.
Purification	The antibody was purified by immunogen affinity chromatography.
Molecular Weight	Predicted: 102 kD; Observed: 125; 90 kD
Form/Buffer	Liquid in 0.42% Potassium phosphate, 0.87% Sodium chloride, pH 7.3, 30% glycerol, and 0.01% sodium azide.
Alternative Names	Rho guanine nucleotide exchange factor 1; 115 kDa guanine nucleotide exchange factor; p115-RhoGEF; p115RhoGEF; Sub1.5
Gene Symbol	ARHGEF1
Entrez Gene	9138(Human); 16801(Mouse)
SwissProt	Q92888(Human); Q61210(Mouse); Q9Z1I6(Rat)

\*AREX continuously optimizes our products. Webpage content may not reflect the latest updates. For inquiries, please contact [info@arexbio.com](mailto:info@arexbio.com) or your local distributor.

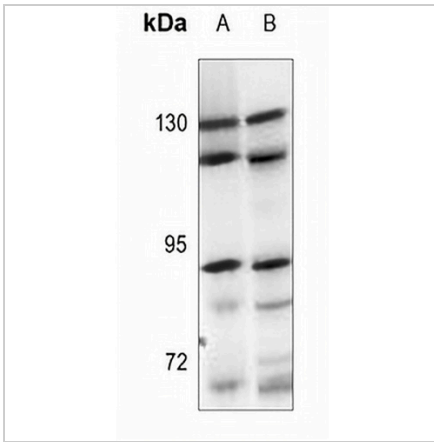
\*Clone Number, Reactivity, Source/Host and Clonality can be found in the product name and Key Features section above.

**DATASHEET**

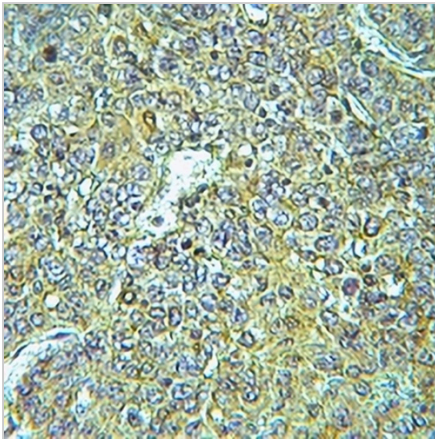
**ARHGEF1 Rabbit Polyclonal Antibody**

CAT. NO. APA07817

**DATA**



Western blot analysis of ARHGEF1 expression in HuT78 (A), A549 (B) whole cell lysates. (Predicted band size: 102 kD; Observed band size: 125; 90 kD)



Immunohistochemical analysis of ARHGEF1 staining in human liver cancer formalin fixed paraffin embedded tissue section. The section was pre-treated using heat mediated antigen retrieval with sodium citrate buffer (pH 6.0). The section was then incubated with the antibody at room temperature and detected using an HRP conjugated compact polymer system. DAB was used as the chromogen. The section was then counterstained with haematoxylin and mounted with DPX.

**STORAGE**

Store at 4°C short term. For long term storage, store at -20°C, avoiding freeze/thaw cycles.

**NOTE**

For Research Use Only. Not for diagnostic, therapeutics, prophylactic or in vivo use.