

DATASHEET

CNT1 Rabbit Polyclonal Antibody

CAT. NO. APA07821

KEY FEATURES

| | | | |
|---------------|---|---------------|---------------------|
| Target | CNT1 | Source / Host | Rabbit |
| Reactivity | Human, Mouse, Rat | Clonality | Polyclonal |
| Applications | WB | Conjugation | Unconjugated |
| Form / Buffer | Liquid in 0.42% Potassium phosphate, 0.87% Sodium chloride, pH 7.3, 30% glycerol, and 0.01% sodium azide. | | Storage at -20°C |

BACKGROUND

Sodium and pyrimidine nucleoside symporter of the plasma membrane that imports uridine, thymidine and cytidine into cells by coupling their transport to the transmembrane sodium electrochemical gradient. Also transports adenosine, an atypical substrate transported with high apparent affinity, but low maximum velocity. Therefore, exhibits the transport characteristics of the nucleoside transport system cit or N2 subtype (N2/cit) . Involved in renal nucleoside (re)absorption .

APPLICATION

To ensure optimal assay performance, AREX recommends conducting reagent titration tailored to each testing system for optimal detection results.

| | |
|----|----------------|
| WB | 1:500 - 1:1000 |
|----|----------------|

*Results are sample-specific. Please refer to your local assay conditions and test parameters for reference.

PRODUCT OVERVIEW

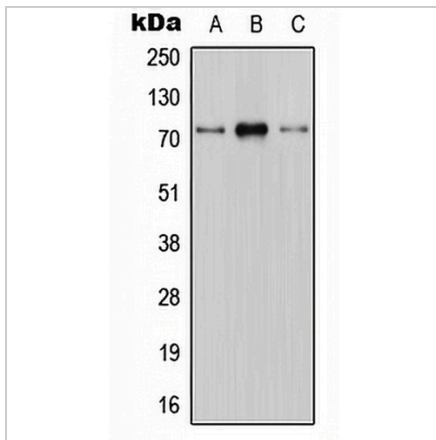
| | |
|-------------------|---|
| Description | Rabbit polyclonal antibody to CNT1 |
| Specificity | Recognizes endogenous levels of CNT1 protein. |
| Antibody Type | Primary antibody |
| Immunogen | KLH-conjugated synthetic peptide encompassing a sequence within the center region of human CNT1. The exact sequence is proprietary. |
| Purification | The antibody was purified by immunogen affinity chromatography. |
| Molecular Weight | Predicted: 71 kD; Observed: 80 kD |
| Form/Buffer | Liquid in 0.42% Potassium phosphate, 0.87% Sodium chloride, pH 7.3, 30% glycerol, and 0.01% sodium azide. |
| Alternative Names | CNT1; Sodium/nucleoside cotransporter 1; Concentrative nucleoside transporter 1; CNT 1; hCNT1; Na(+)/nucleoside cotransporter 1; Sodium-coupled nucleoside transporter 1; Solute carrier family 28 member 1 |
| Gene Symbol | SLC28A1 |
| Entrez Gene | 9154(Human); 116642(Rat) |
| SwissProt | O00337(Human); Q62674(Rat) |

*AREX continuously optimizes our products. Webpage content may not reflect the latest updates. For inquiries, please contact info@arexbio.com or your local distributor.

*Clone Number, Reactivity, Source/Host and Clonality can be found in the product name and Key Features section above.

DATASHEET**CNT1 Rabbit Polyclonal Antibody**

CAT. NO. APA07821

DATA

Western blot analysis of CNT1 expression in HEK293T (A), mouse brain (B), H9C2 (C) whole cell lysates. (Predicted band size: 71 kD; Observed band size: 80 kD)

STORAGE

Store at 4°C short term. For long term storage, store at -20°C, avoiding freeze/thaw cycles.

NOTE

For Research Use Only. Not for diagnostic, therapeutics, prophylactic or in vivo use.