

DATASHEET

COX7A2L Rabbit Polyclonal Antibody

CAT. NO. APA07823

KEY FEATURES

Target	COX7A2L	Source / Host	Rabbit
Reactivity	Human, Mouse, Rat	Clonality	Polyclonal
Applications	WB	Conjugation	Unconjugated
Form / Buffer	Liquid in 0.42% Potassium phosphate, 0.87% Sodium chloride, pH 7.3, 30% glycerol, and 0.01% sodium azide.		Storage at -20°C

BACKGROUND

Assembly factor that mediates the formation of some mitochondrial respiratory supercomplexes (respirasomes), thereby promoting oxidative phosphorylation and energy metabolism, thereby promoting oxidative phosphorylation and energy metabolism. Acts as a molecular adapter that associates with both mitochondrial respiratory complexes III (CIII) and IV (CIV), promoting their association. Mediates the formation of various mitochondrial respiratory supercomplexes, such as MCIII(2)IV(2), composed of two CIII and two CIV, and the CS-respirasome (MCI(1)III(2)IV(2)), composed of one CI, two CIII and two CIV. Not involved in the formation of the canonical respirasome (MCI(1)III(2)IV(1)), composed of one CI, two CIII and one CIV.

APPLICATION

To ensure optimal assay performance, AREX recommends conducting reagent titration tailored to each testing system for optimal detection results.

WB	1:500 - 1:1000
----	----------------

*Results are sample-specific. Please refer to your local assay conditions and test parameters for reference.

PRODUCT OVERVIEW

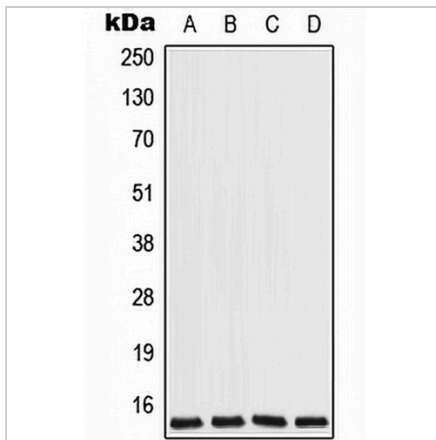
Description	Rabbit polyclonal antibody to COX7A2L
Specificity	Recognizes endogenous levels of COX7A2L protein.
Antibody Type	Primary antibody
Immunogen	KLH-conjugated synthetic peptide encompassing a sequence within the center region of human COX7A2L. The exact sequence is proprietary.
Purification	The antibody was purified by immunogen affinity chromatography.
Molecular Weight	Predicted: 12 kD; Observed: 13 kD
Form/Buffer	Liquid in 0.42% Potassium phosphate, 0.87% Sodium chloride, pH 7.3, 30% glycerol, and 0.01% sodium azide.
Alternative Names	COX7AR; COX7RP; Cytochrome c oxidase subunit 7A-related protein mitochondrial; COX7a-related protein; Cytochrome c oxidase subunit VIIa-related protein; EB1
Gene Symbol	COX7A2L
Entrez Gene	9167(Human); 20463(Mouse)
SwissProt	O14548(Human); Q61387(Mouse)

*AREX continuously optimizes our products. Webpage content may not reflect the latest updates. For inquiries, please contact info@arexbio.com or your local distributor.

*Clone Number, Reactivity, Source/Host and Clonality can be found in the product name and Key Features section above.

DATASHEET**COX7A2L Rabbit Polyclonal Antibody**

CAT. NO. APA07823

DATA

Western blot analysis of COX7A2L expression in Jurkat (A), HeLa (B), Raw264.7 (C), H9C2 (D) whole cell lysates. (Predicted band size: 12 kD; Observed band size: 13 kD)

STORAGE

Store at 4°C short term. For long term storage, store at -20°C, avoiding freeze/thaw cycles.

NOTE

For Research Use Only. Not for diagnostic, therapeutics, prophylactic or in vivo use.