

**DATASHEET**

**NCKX1 Rabbit Polyclonal Antibody**

CAT. NO. APA07828

**KEY FEATURES**

|               |   |               |                     |
|---------------|---|---------------|---------------------|
| Target        | NCKX1   | Source / Host | Rabbit              |
| Reactivity    | Human, Mouse, Rat, Monkey   | Clonality     | Polyclonal          |
| Applications  | WB, IF/ICC  | Conjugation   | Unconjugated        |
| Form / Buffer | Liquid in 0.42% Potassium phosphate, 0.87% Sodium chloride, pH 7.3, 30% glycerol, and 0.01% sodium azide. |               | Storage<br>at -20°C |

**BACKGROUND**

Calcium, potassium:sodium antiporter that transports 1 Ca(2+) and 1 K(+) in exchange for 4 Na(+) and 1 K(+) in exchange for 4 Na(+). Critical component of the visual transduction cascade, controlling the calcium concentration of outer segments during light and darkness. Light causes a rapid lowering of cytosolic free calcium in the outer segment of both retinal rod and cone photoreceptors and the light-induced lowering of calcium is caused by extrusion via this protein which plays a key role in the process of light adaptation.

**APPLICATION**

To ensure optimal assay performance, AREX recommends conducting reagent titration tailored to each testing system for optimal detection results.

|        |                |
|--------|----------------|
| WB     | 1:500 - 1:1000 |
| IF/ICC | 1:100 - 1:500  |

\*Results are sample-specific. Please refer to your local assay conditions and test parameters for reference.

**PRODUCT OVERVIEW**

|                   |   |
|-------------------|---|
| Description       | Rabbit polyclonal antibody to NCKX1   |
| Specificity       | Recognizes endogenous levels of NCKX1 protein.  |
| Antibody Type     | Primary antibody  |
| Immunogen         | KLH-conjugated synthetic peptide encompassing a sequence within the center region of human NCKX1. The exact sequence is proprietary.                          |
| Purification      | The antibody was purified by immunogen affinity chromatography.   |
| Molecular Weight  | Predicted: 121 kD; Observed: 121 kD   |
| Form/Buffer       | Liquid in 0.42% Potassium phosphate, 0.87% Sodium chloride, pH 7.3, 30% glycerol, and 0.01% sodium azide.   |
| Alternative Names | KIAA0702; NCKX1; Sodium/potassium/calcium exchanger 1; Na(+)/K(+)/Ca(2+)-exchange protein 1; Retinal rod Na-Ca+K exchanger; Solute carrier family 24 member 1 |
| Gene Symbol       | SLC24A1   |
| Entrez Gene       | 9187(Human)   |
| SwissProt         | O60721(Human)   |

\*AREX continuously optimizes our products. Webpage content may not reflect the latest updates. For inquiries, please contact [info@arexbio.com](mailto:info@arexbio.com) or your local distributor.

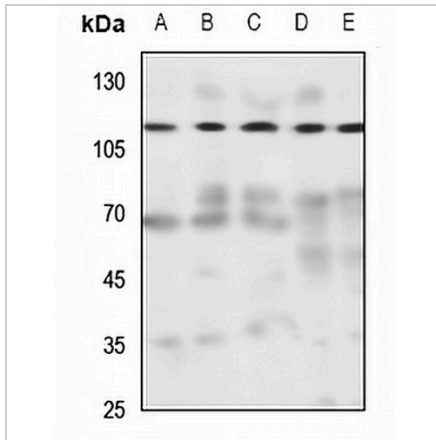
\*Clone Number, Reactivity, Source/Host and Clonality can be found in the product name and Key Features section above.

**DATASHEET**

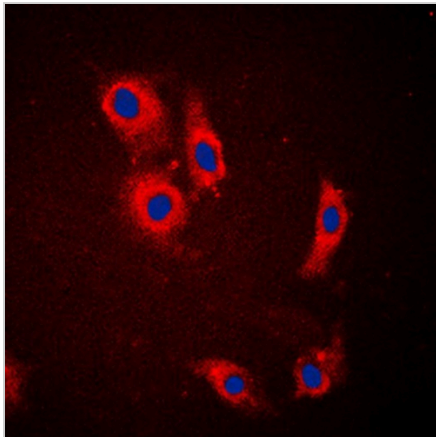
**NCKX1 Rabbit Polyclonal Antibody**

CAT. NO. APA07828

**DATA**



Western blot analysis of NCKX1 expression in HeLa (A), H446 (B), H1688 (C), mouse testis (D), rat testis (E) whole cell lysates. (Predicted band size: 121 kD; Observed band size: 121 kD)



Immunofluorescent analysis of NCKX1 staining in HeLa cells. Formalin-fixed cells were permeabilized with 0.1% Triton X-100 in TBS for 5-10 minutes and blocked with 3% BSA-PBS for 30 minutes at room temperature. Cells were probed with the primary antibody in 3% BSA-PBS and incubated overnight at 4 °C in a humidified chamber. Cells were washed with PBST and incubated with a DyLight 594-conjugated secondary antibody (red) in PBS at room temperature in the dark. DAPI was used to stain the cell nuclei (blue).

**STORAGE**

Store at 4°C short term. For long term storage, store at -20°C, avoiding freeze/thaw cycles.

**NOTE**

For Research Use Only. Not for diagnostic, therapeutics, prophylactic or in vivo use.