

DATASHEET

GPR50 Rabbit Polyclonal Antibody

CAT. NO. APA07834

KEY FEATURES

Target	GPR50	Source / Host	Rabbit
Reactivity	Human, Mouse, Rat	Clonality	Polyclonal
Applications	WB, IF/ICC	Conjugation	Unconjugated
Form / Buffer	Liquid in 0.42% Potassium phosphate, 0.87% Sodium chloride, pH 7.3, 30% glycerol, and 0.01% sodium azide.		Storage at -20°C

BACKGROUND

G protein-coupled receptor that plays a role in numerous physiological processes including regulation of energy metabolism, neurite outgrowth or cell migration . Promotes self-renewal and neuronal differentiation of neural progenitor cells through activation of the NOTCH and WNT/beta-catenin signaling pathways . Modulates the KAT5-dependent glucocorticoid receptor signaling by modulating KAT5 subcellular compartmentalisation . Also plays a role in the activation TGFBR1 in the absence of TGFBR2 by interfering with FKBP1A binding to TGFBR1, leading to induction of both canonical and non-canonical SMAD signaling pathways resulting in inhibition of proliferation or promotion of migration .

APPLICATION

To ensure optimal assay performance, AREX recommends conducting reagent titration tailored to each testing system for optimal detection results.

WB	1:500 - 1:1000
IF/ICC	1:50 - 1:200

*Results are sample-specific. Please refer to your local assay conditions and test parameters for reference.

PRODUCT OVERVIEW

Description	Rabbit polyclonal antibody to GPR50
Specificity	Recognizes endogenous levels of GPR50 protein.
Antibody Type	Primary antibody
Immunogen	KLH-conjugated synthetic peptide encompassing a sequence within the center region of human GPR50. The exact sequence is proprietary.
Purification	The antibody was purified by immunogen affinity chromatography.
Molecular Weight	Predicted: 67 kD; Observed: 67 kD
Form/Buffer	Liquid in 0.42% Potassium phosphate, 0.87% Sodium chloride, pH 7.3, 30% glycerol, and 0.01% sodium azide.
Alternative Names	Melatonin-related receptor; G protein-coupled receptor 50; H9
Gene Symbol	GPR50
Entrez Gene	9248(Human); 14765(Mouse)
SwissProt	Q13585(Human); O88495(Mouse); Q62953(Rat)

*AREX continuously optimizes our products. Webpage content may not reflect the latest updates. For inquiries, please contact info@arexbio.com or your local distributor.

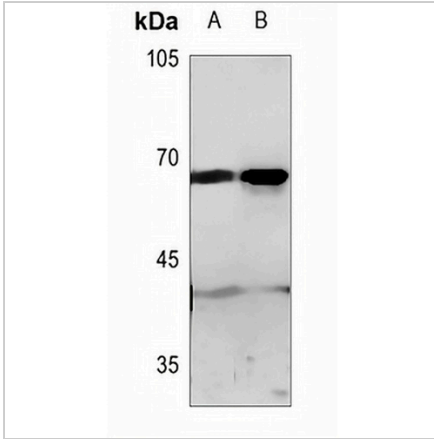
*Clone Number, Reactivity, Source/Host and Clonality can be found in the product name and Key Features section above.

DATASHEET

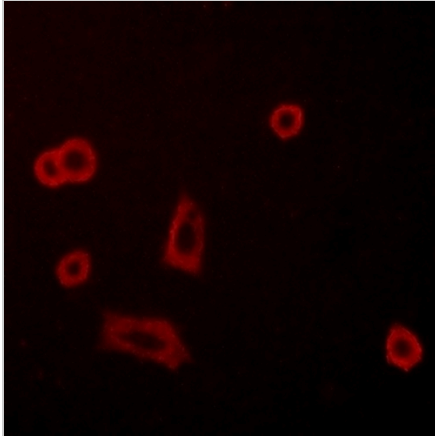
GPR50 Rabbit Polyclonal Antibody

CAT. NO. APA07834

DATA



Western blot analysis of GPR50 expression in mouse testis (A), rat testis (B) whole cell lysates. (Predicted band size: 67 kD; Observed band size: 67 kD)



Immunofluorescent analysis of GPR50 staining in LOVO cells. Formalin-fixed cells were permeabilized with 0.1% Triton X-100 in TBS for 5-10 minutes and blocked with 3% BSA-PBS for 30 minutes at room temperature. Cells were probed with the primary antibody in 3% BSA-PBS and incubated overnight at 4 °C in a humidified chamber. Cells were washed with PBST and incubated with a AREX® Fluor 594-conjugated secondary antibody (red) in PBS at room temperature in the dark.

STORAGE

Store at 4°C short term. For long term storage, store at -20°C, avoiding freeze/thaw cycles.

NOTE

For Research Use Only. Not for diagnostic, therapeutics, prophylactic or in vivo use.