

DATASHEET

GTF3C3 Rabbit Polyclonal Antibody

CAT. NO. APA07840

KEY FEATURES

Target	GTF3C3	Source / Host	Rabbit
Reactivity	Human, Mouse, Rat	Clonality	Polyclonal
Applications	WB, IHC	Conjugation	Unconjugated
Form / Buffer	Liquid in 0.42% Potassium phosphate, 0.87% Sodium chloride, pH 7.3, 30% glycerol, and 0.01% sodium azide.		Storage at -20°C

BACKGROUND

Involved in RNA polymerase III-mediated transcription. Integral, tightly associated component of the DNA-binding TFIIC2 subcomplex that directly binds tRNA and virus-associated RNA promoters.

APPLICATION

To ensure optimal assay performance, AREX recommends conducting reagent titration tailored to each testing system for optimal detection results.

WB	1:500 - 1:1000
IHC	1:100 - 1:200

*Results are sample-specific. Please refer to your local assay conditions and test parameters for reference.

PRODUCT OVERVIEW

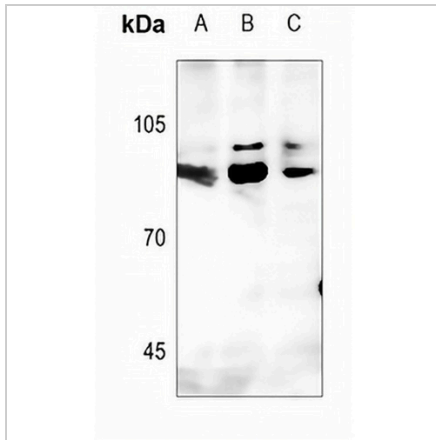
Description	Rabbit polyclonal antibody to GTF3C3
Specificity	Recognizes endogenous levels of GTF3C3 protein.
Antibody Type	Primary antibody
Immunogen	KLH-conjugated synthetic peptide encompassing a sequence within the N-term region of human GTF3C3. The exact sequence is proprietary.
Purification	The antibody was purified by immunogen affinity chromatography.
Molecular Weight	Predicted: 101 kD; Observed: 102 kD
Form/Buffer	Liquid in 0.42% Potassium phosphate, 0.87% Sodium chloride, pH 7.3, 30% glycerol, and 0.01% sodium azide.
Alternative Names	General transcription factor 3C polypeptide 3; Transcription factor IIIC 102 kDa subunit; TFIIC 102 kDa subunit; TFIIC102; Transcription factor IIIC subunit gamma; TF3C-gamma
Gene Symbol	GTF3C3
Entrez Gene	9330(Human)
SwissProt	Q9Y5Q9(Human)

*AREX continuously optimizes our products. Webpage content may not reflect the latest updates. For inquiries, please contact info@arexbio.com or your local distributor.

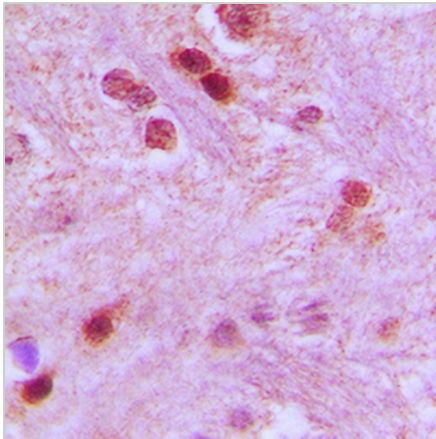
*Clone Number, Reactivity, Source/Host and Clonality can be found in the product name and Key Features section above.

DATASHEET**GTF3C3 Rabbit Polyclonal Antibody**

CAT. NO. APA07840

DATA

Western blot analysis of GTF3C3 expression in HEK293T (A), H446 (B), A549 (C) whole cell lysates. (Predicted band size: 101 kDa; Observed band size: 102 kDa)



Immunohistochemical analysis of GTF3C3 staining in human brain formalin fixed paraffin embedded tissue section. The section was pre-treated using heat mediated antigen retrieval with sodium citrate buffer (pH 6.0). The section was then incubated with the antibody at room temperature and detected using an HRP conjugated compact polymer system. DAB was used as the chromogen. The section was then counterstained with haematoxylin and mounted with DPX.

STORAGE

Store at 4°C short term. For long term storage, store at -20°C, avoiding freeze/thaw cycles.

NOTE

For Research Use Only. Not for diagnostic, therapeutics, prophylactic or in vivo use.