

## DATASHEET

# B4GALT5 Rabbit Polyclonal Antibody

CAT. NO. APA07841

### KEY FEATURES

Target	B4GALT5	Source / Host	Rabbit
Reactivity	Human, Mouse, Rat, Monkey	Clonality	Polyclonal
Applications	WB, IF/ICC	Conjugation	Unconjugated
Form / Buffer	Liquid in 0.42% Potassium phosphate, 0.87% Sodium chloride, pH 7.3, 30% glycerol, and 0.01% sodium azide.		Storage at -20°C

### BACKGROUND

Catalyzes the synthesis of lactosylceramide (LacCer) via the transfer of galactose from UDP-galactose to glucosylceramide (GlcCer) via the transfer of galactose from UDP-galactose to glucosylceramide (GlcCer). LacCer is the starting point in the biosynthesis of all gangliosides (membrane-bound glycosphingolipids) which play pivotal roles in the CNS including neuronal maturation and axonal and myelin formation. Plays a role in the glycosylation of BMPR1A and regulation of its protein stability. Essential for extraembryonic development during early embryogenesis.

### APPLICATION

To ensure optimal assay performance, AREX recommends conducting reagent titration tailored to each testing system for optimal detection results.

WB	1:500 - 1:1000
IF/ICC	1:50 - 1:200

\*Results are sample-specific. Please refer to your local assay conditions and test parameters for reference.

### PRODUCT OVERVIEW

Description	Rabbit polyclonal antibody to B4GALT5
Specificity	Recognizes endogenous levels of B4GALT5 protein.
Antibody Type	Primary antibody
Immunogen	KLH-conjugated synthetic peptide encompassing a sequence within the C-term region of human B4GALT5. The exact sequence is proprietary.
Purification	The antibody was purified by immunogen affinity chromatography.
Molecular Weight	Predicted: 45 kD; Observed: 45 kD
Form/Buffer	Liquid in 0.42% Potassium phosphate, 0.87% Sodium chloride, pH 7.3, 30% glycerol, and 0.01% sodium azide.
Alternative Names	Beta-1,4-galactosyltransferase 5; Beta-1,4-GalTase 5; Beta4Gal-T5; b4Gal-T5; Beta-1,4-GalT II; UDP-Gal:beta-GlcNAc beta-1,4-galactosyltransferase 5; UDP-galactose:beta-N-acetylglucosamine beta-1,4-galactosyltransferase 5
Gene Symbol	B4GALT5
Entrez Gene	9334(Human); 56336(Mouse)
SwissProt	O43286(Human); Q9JMK0(Mouse)

\*AREX continuously optimizes our products. Webpage content may not reflect the latest updates. For inquiries, please contact [info@arex.bio](mailto:info@arex.bio) or your local distributor.

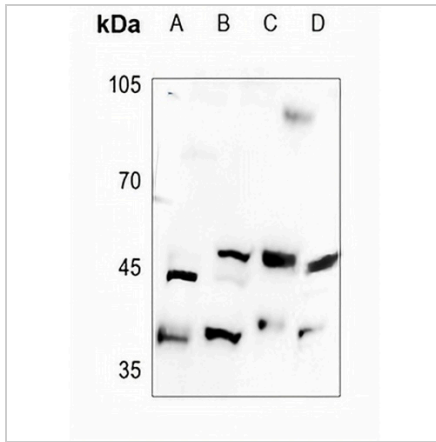
\*Clone Number, Reactivity, Source/Host and Clonality can be found in the product name and Key Features section above.

**DATASHEET**

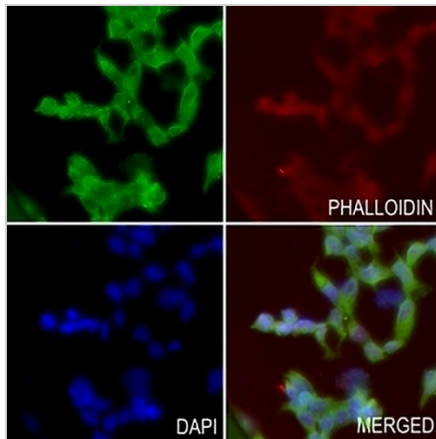
**B4GALT5 Rabbit Polyclonal Antibody**

CAT. NO. APA07841

**DATA**



Western blot analysis of B4GALT5 expression in K562 (A), A549 (B), mouse heart (C), rat brain (D) whole cell lysates. (Predicted band size: 45 kD; Observed band size: 45 kD)



Immunofluorescent analysis of B4GALT5 staining in HEK293T cells. Formalin-fixed cells were permeabilized with 0.1% Triton X-100 in TBS for 5-10 minutes and blocked with 3% BSA-PBS for 30 minutes at room temperature. Cells were probed with the primary antibody in 3% BSA-PBS and incubated overnight at 4 °C in a humidified chamber. Cells were washed with PBST and incubated with a AREX® Fluor 488 -conjugated secondary antibody (green) in PBS at room temperature in the dark. Phalloidin - AREX® Fluor 594 was used to stain Actin filaments (red). DAPI was used to stain the cell nuclei (blue).

**STORAGE**

Store at 4°C short term. For long term storage, store at -20°C, avoiding freeze/thaw cycles.

**NOTE**

For Research Use Only. Not for diagnostic, therapeutics, prophylactic or in vivo use.