

**DATASHEET**

**RECQL4 Rabbit Polyclonal Antibody**

CAT. NO. APA07847

**KEY FEATURES**

Target	RECQL4	Source / Host	Rabbit
Reactivity	Human, Mouse, Rat	Clonality	Polyclonal
Applications	WB	Conjugation	Unconjugated
Form / Buffer	Liquid in 0.42% Potassium phosphate, 0.87% Sodium chloride, pH 7.3, 30% glycerol, and 0.01% sodium azide.		Storage at -20°C

**BACKGROUND**

An ATP-dependent DNA helicase which unwinds dsDNA with a 3'-overhang in a 3'-5' direction . Does not unwind more than 18 bp of dsDNA . May modulate chromosome segregation. The N-terminal domain (residues 1-54) binds DNA Y-shaped DNA better than ss- or dsDNA . The core helicase domain binds ssDNA .

**APPLICATION**

To ensure optimal assay performance, AREX recommends conducting reagent titration tailored to each testing system for optimal detection results.

WB	1:500 - 1:1000
----	----------------

\*Results are sample-specific. Please refer to your local assay conditions and test parameters for reference.

**PRODUCT OVERVIEW**

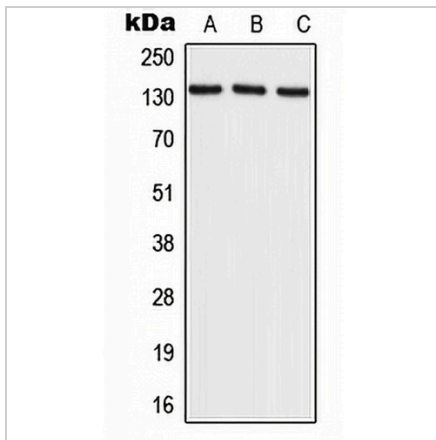
Description	Rabbit polyclonal antibody to RECQL4
Specificity	Recognizes endogenous levels of RECQL4 protein.
Antibody Type	Primary antibody
Immunogen	KLH-conjugated synthetic peptide encompassing a sequence within the C-term region of human RECQL4. The exact sequence is proprietary.
Purification	The antibody was purified by immunogen affinity chromatography.
Molecular Weight	Predicted: 133 kD; Observed: 140 kD
Form/Buffer	Liquid in 0.42% Potassium phosphate, 0.87% Sodium chloride, pH 7.3, 30% glycerol, and 0.01% sodium azide.
Alternative Names	RECQ4; ATP-dependent DNA helicase Q4; DNA helicase, RecQ-like type 4; RecQ4; RTS; RecQ protein-like 4
Gene Symbol	RECQL4
Entrez Gene	9401(Human); 79456(Mouse)
SwissProt	O94761(Human); Q75NR7(Mouse)

\*AREX continuously optimizes our products. Webpage content may not reflect the latest updates. For inquiries, please contact [info@arexbio.com](mailto:info@arexbio.com) or your local distributor.

\*Clone Number, Reactivity, Source/Host and Clonality can be found in the product name and Key Features section above.

**DATASHEET****RECQL4 Rabbit Polyclonal Antibody**

CAT. NO. APA07847

**DATA**

Western blot analysis of RECQL4 expression in HeLa (A), NIH3T3 (B), rat brain (C) whole cell lysates. (Predicted band size: 133 kD; Observed band size: 140 kD)

**STORAGE**

Store at 4°C short term. For long term storage, store at -20°C, avoiding freeze/thaw cycles.

**NOTE**

For Research Use Only. Not for diagnostic, therapeutics, prophylactic or in vivo use.