

DATASHEET

IL-27RA Rabbit Polyclonal Antibody

CAT. NO. APA07854

KEY FEATURES

Target	IL-27RA	Source / Host	Rabbit
Reactivity	Human, Mouse, Rat	Clonality	Polyclonal
Applications	WB	Conjugation	Unconjugated
Form / Buffer	Liquid in 0.42% Potassium phosphate, 0.87% Sodium chloride, pH 7.3, 30% glycerol, and 0.01% sodium azide.		Storage at-20°C

BACKGROUND

Receptor for IL27. Requires IL6ST/GP130 to mediate signal transduction in response to IL27. This signaling system acts through STAT3 and STAT1. Acts as a receptor for the neuroprotective peptide humanin as part of a complex with IL6ST/GP130 and CNTFR. Involved in the regulation of Th1-type immune responses. Also appears to be involved in innate defense mechanisms.

APPLICATION

To ensure optimal assay performance, AREX recommends conducting reagent titration tailored to each testing system for optimal detection results.

WB	1:500 - 1:1000
----	----------------

*Results are sample-specific. Please refer to your local assay conditions and test parameters for reference.

PRODUCT OVERVIEW

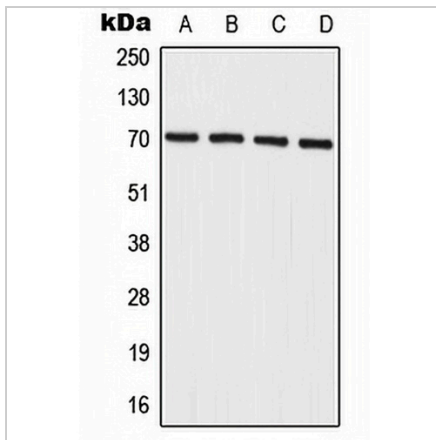
Description	Rabbit polyclonal antibody to IL-27RA
Specificity	Recognizes endogenous levels of IL-27RA protein.
Antibody Type	Primary antibody
Immunogen	KLH-conjugated synthetic peptide encompassing a sequence within the center region of human IL-27RA. The exact sequence is proprietary.
Purification	The antibody was purified by immunogen affinity chromatography.
Molecular Weight	Predicted: 69 kD; Observed: 75 kD
Form/Buffer	Liquid in 0.42% Potassium phosphate, 0.87% Sodium chloride, pH 7.3, 30% glycerol, and 0.01% sodium azide.
Alternative Names	CRL1; TCCR; WSX1; Interleukin-27 receptor subunit alpha; IL-27 receptor subunit alpha; IL-27R subunit alpha; IL-27R-alpha; IL-27RA; Cytokine receptor WSX-1; Cytokine receptor-like 1; Type I T-cell cytokine receptor; TCCR; ZcytoR1
Gene Symbol	IL27RA
Entrez Gene	9466(Human); 50931(Mouse)
SwissProt	Q6UWB1(Human); O70394(Mouse)

*AREX continuously optimizes our products. Webpage content may not reflect the latest updates. For inquiries, please contact info@arexbio.com or your local distributor.

*Clone Number, Reactivity, Source/Host and Clonality can be found in the product name and Key Features section above.

DATASHEET**IL-27RA Rabbit Polyclonal Antibody**

CAT. NO. APA07854

DATA

Western blot analysis of IL-27RA expression in A549 (A), HeLa (B), mouse spleen (C), rat spleen (D) whole cell lysates. (Predicted band size: 69 kD; Observed band size: 75 kD)

STORAGE

Store at 4°C short term. For long term storage, store at -20°C, avoiding freeze/thaw cycles.

NOTE

For Research Use Only. Not for diagnostic, therapeutics, prophylactic or in vivo use.