

DATASHEET

SCAMP1 Rabbit Polyclonal Antibody

CAT. NO. APA07858

KEY FEATURES

Target	SCAMP1	Source / Host	Rabbit
Reactivity	Human, Mouse, Rat, Bovine, Pig	Clonality	Polyclonal
Applications	WB	Conjugation	Unconjugated
Form / Buffer	Liquid in 0.42% Potassium phosphate, 0.87% Sodium chloride, pH 7.3, 30% glycerol, and 0.01% sodium azide.		Storage at-20°C

BACKGROUND

Functions in post-Golgi recycling pathways. Acts as a recycling carrier to the cell surface.

APPLICATION

To ensure optimal assay performance, AREX recommends conducting reagent titration tailored to each testing system for optimal detection results.

WB	1:500 - 1:1000
----	----------------

*Results are sample-specific. Please refer to your local assay conditions and test parameters for reference.

PRODUCT OVERVIEW

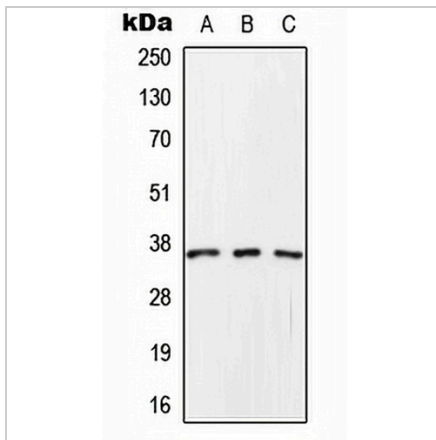
Description	Rabbit polyclonal antibody to SCAMP1
Specificity	Recognizes endogenous levels of SCAMP1 protein.
Antibody Type	Primary antibody
Immunogen	KLH-conjugated synthetic peptide encompassing a sequence within the C-term region of human SCAMP1. The exact sequence is proprietary.
Purification	The antibody was purified by immunogen affinity chromatography.
Molecular Weight	Predicted: 18; Observed: 37 kD
Form/Buffer	Liquid in 0.42% Potassium phosphate, 0.87% Sodium chloride, pH 7.3, 30% glycerol, and 0.01% sodium azide.
Alternative Names	SCAMP; Secretory carrier-associated membrane protein 1; Secretory carrier membrane protein 1
Gene Symbol	SCAMP1
Entrez Gene	9522(Human); 107767(Mouse); 29521(Rat)
SwissProt	O15126(Human); Q8K021(Mouse); P56603(Rat)

*AREX continuously optimizes our products. Webpage content may not reflect the latest updates. For inquiries, please contact info@arexbio.com or your local distributor.

*Clone Number, Reactivity, Source/Host and Clonality can be found in the product name and Key Features section above.

DATASHEET**SCAMP1 Rabbit Polyclonal Antibody**

CAT. NO. APA07858

DATA

Western blot analysis of SCAMP1 expression in HeLa (A), Raw264.7 (B), rat brain (C) whole cell lysates. (Predicted band size: 18; 37 kD; Observed band size: 37 kD)

STORAGE

Store at 4°C short term. For long term storage, store at -20°C, avoiding freeze/thaw cycles.

NOTE

For Research Use Only. Not for diagnostic, therapeutics, prophylactic or in vivo use.