

DATASHEET

BAGE5 Rabbit Polyclonal Antibody

CAT. NO. APA07859

KEY FEATURES

Target	BAGE5	Source / Host	Rabbit
Reactivity	Human, Bovine, Monkey	Clonality	Polyclonal
Applications	WB, IF/ICC	Conjugation	Unconjugated
Form / Buffer	Liquid in 0.42% Potassium phosphate, 0.87% Sodium chloride, pH 7.3, 30% glycerol, and 0.01% sodium azide.		Storage at-20°C

BACKGROUND

Co-chaperone for HSP/HSP70 proteins. It functions as a nucleotide-exchange factor promoting the release of ADP from HSP70, thereby activating HSP70-mediated protein refolding . Has an essential role in maintaining proteostasis at junctional membrane complexes (JMC), where it may function as a scaffold between the HSPA8 chaperone and JMC proteins enabling correct, HSPA8-dependent JMC protein folding . Inhibits both auto-ubiquitination of PRKN and ubiquitination of target proteins by PRKN .

APPLICATION

To ensure optimal assay performance, AREX recommends conducting reagent titration tailored to each testing system for optimal detection results.

WB	1:500 - 1:1000
IF/ICC	1:50 - 1:200

*Results are sample-specific. Please refer to your local assay conditions and test parameters for reference.

PRODUCT OVERVIEW

Description	Rabbit polyclonal antibody to BAGE5
Specificity	Recognizes endogenous levels of BAGE5 protein.
Antibody Type	Primary antibody
Immunogen	KLH-conjugated synthetic peptide encompassing a sequence within the N-term region of human BAGE5. The exact sequence is proprietary.
Purification	The antibody was purified by immunogen affinity chromatography.
Molecular Weight	Predicted: 51 kD; Observed: 51 kD
Form/Buffer	Liquid in 0.42% Potassium phosphate, 0.87% Sodium chloride, pH 7.3, 30% glycerol, and 0.01% sodium azide.
Alternative Names	KIAA0873; BAG family molecular chaperone regulator 5; BAG-5; Bcl-2-associated athanogene 5
Gene Symbol	BAG5
Entrez Gene	9529(Human)
SwissProt	Q9UL15(Human)

*AREX continuously optimizes our products. Webpage content may not reflect the latest updates. For inquiries, please contact info@arexbio.com or your local distributor.

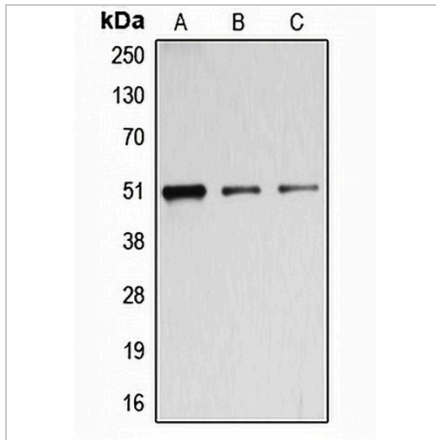
*Clone Number, Reactivity, Source/Host and Clonality can be found in the product name and Key Features section above.

DATASHEET

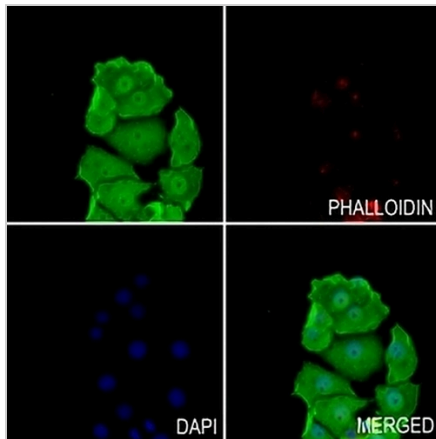
BAGE5 Rabbit Polyclonal Antibody

CAT. NO. APA07859

DATA



Western blot analysis of BAGE5 expression in HeLa (A), A549 (B), MOLT4 (C) whole cell lysates. (Predicted band size: 51 kD; Observed band size: 51 kD)



Immunofluorescent analysis of BAGE5 staining in HeLa cells. Formalin-fixed cells were permeabilized with 0.1% Triton X-100 in TBS for 5-10 minutes and blocked with 3% BSA-PBS for 30 minutes at room temperature. Cells were probed with the primary antibody in 3% BSA-PBS and incubated overnight at 4 °C in a humidified chamber. Cells were washed with PBST and incubated with a AREX® Fluor 488 -conjugated secondary antibody (green) in PBS at room temperature in the dark. Phalloidin - AREX® Fluor 594 was used to stain Actin filaments (red). DAPI was used to stain the cell nuclei (blue).

STORAGE

Store at 4°C short term. For long term storage, store at -20°C, avoiding freeze/thaw cycles.

NOTE

For Research Use Only. Not for diagnostic, therapeutics, prophylactic or in vivo use.