

DATASHEET

CHD1L Rabbit Polyclonal Antibody

CAT. NO. APA07862

KEY FEATURES

Target	CHD1L	Source / Host	Rabbit
Reactivity	Human, Mouse, Rat	Clonality	Polyclonal
Applications	WB, IF/ICC	Conjugation	Unconjugated
Form / Buffer	Liquid in 0.42% Potassium phosphate, 0.87% Sodium chloride, pH 7.3, 30% glycerol, and 0.01% sodium azide.		Storage at-20°C

BACKGROUND

ATP-dependent chromatin remodeler that mediates chromatin-remodeling following DNA damage . Recruited to DNA damage sites through interaction with poly-ADP-ribose: specifically recognizes and binds histones that are poly-ADP-ribosylated on serine residues in response to DNA damage . Poly-ADP-ribose-binding activates the ATP-dependent chromatin remodeler activity, thereby regulating chromatin during DNA repair . Catalyzes nucleosome sliding away from DNA breaks in an ATP-dependent manner . Chromatin remodeling activity promotes PARP2 removal from chromatin .

APPLICATION

To ensure optimal assay performance, AREX recommends conducting reagent titration tailored to each testing system for optimal detection results.

WB	1:500 - 1:1000
IF/ICC	1:50 - 1:200

*Results are sample-specific. Please refer to your local assay conditions and test parameters for reference.

PRODUCT OVERVIEW

Description	Rabbit polyclonal antibody to CHD1L
Specificity	Recognizes endogenous levels of CHD1L protein.
Antibody Type	Primary antibody
Immunogen	KLH-conjugated synthetic peptide encompassing a sequence within the center region of human CHD1L. The exact sequence is proprietary.
Purification	The antibody was purified by immunogen affinity chromatography.
Molecular Weight	Predicted: 101 kD; Observed: 101 kD
Form/Buffer	Liquid in 0.42% Potassium phosphate, 0.87% Sodium chloride, pH 7.3, 30% glycerol, and 0.01% sodium azide.
Alternative Names	ALC1; Chromodomain-helicase-DNA-binding protein 1-like; Amplified in liver cancer protein 1
Gene Symbol	CHD1L
Entrez Gene	9557(Human); 68058(Mouse)
SwissProt	Q86WJ1(Human); Q9CXF7(Mouse)

*AREX continuously optimizes our products. Webpage content may not reflect the latest updates. For inquiries, please contact info@arexbio.com or your local distributor.

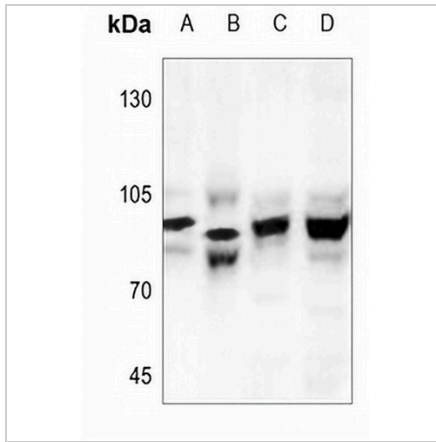
*Clone Number, Reactivity, Source/Host and Clonality can be found in the product name and Key Features section above.

DATASHEET

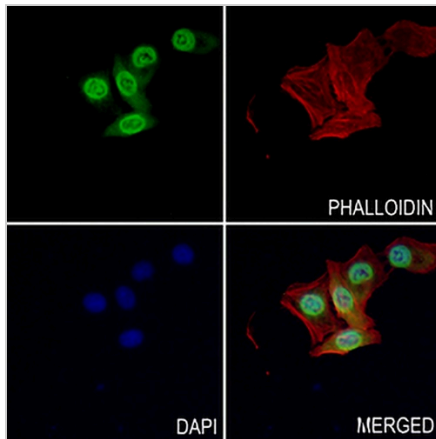
CHD1L Rabbit Polyclonal Antibody

CAT. NO. APA07862

DATA



Western blot analysis of CHD1L expression in HepG2 (A), HEK293T (B), MEF (C), PC12 (D) whole cell lysates. (Predicted band size: 101 kD; Observed band size: 101 kD)



Immunofluorescent analysis of CHD1L staining in HepG2 cells. Formalin-fixed cells were permeabilized with 0.1% Triton X-100 in TBS for 5-10 minutes and blocked with 3% BSA-PBS for 30 minutes at room temperature. Cells were probed with the primary antibody in 3% BSA-PBS and incubated overnight at 4 °C in a humidified chamber. Cells were washed with PBST and incubated with a AREX® Fluor 488 -conjugated secondary antibody (green) in PBS at room temperature in the dark. Phalloidin - AREX® Fluor 594 was used to stain Actin filaments (red). DAPI was used to stain the cell nuclei (blue).

STORAGE

Store at 4°C short term. For long term storage, store at -20°C, avoiding freeze/thaw cycles.

NOTE

For Research Use Only. Not for diagnostic, therapeutics, prophylactic or in vivo use.