

DATASHEET

p130 Cas (Phospho-Y249) Rabbit Polyclonal Antibody

CAT. NO. APA07863

KEY FEATURES

Target	p130 Cas (Phospho-Y249)	Source / Host	Rabbit
Reactivity	Human, Mouse, Rat, Bovine	Clonality	Polyclonal
Applications	WB, IHC, IF/ICC	Conjugation	Unconjugated
Form / Buffer	Liquid in 0.42% Potassium phosphate, 0.87% Sodium chloride, pH 7.3, 30% glycerol, and 0.01% sodium azide.		Storage at -20°C

BACKGROUND

Docking protein which plays a central coordinating role for tyrosine kinase-based signaling related to cell adhesion . Implicated in induction of cell migration and cell branching . Involved in the BCAR3-mediated inhibition of TGFB signaling .

APPLICATION

To ensure optimal assay performance, AREX recommends conducting reagent titration tailored to each testing system for optimal detection results.

WB	1:500 - 1:1000
IHC	1:50 - 1:100
IF/ICC	1:50 - 1:200

*Results are sample-specific. Please refer to your local assay conditions and test parameters for reference.

PRODUCT OVERVIEW

Description	Rabbit polyclonal antibody to p130 Cas (Phospho-Y249)
Specificity	Recognizes endogenous levels of p130 Cas protein only when phosphorylated at Y249.
Antibody Type	Primary antibody
Immunogen	KLH-conjugated synthetic phosphopeptide corresponding to residues surrounding Y249 of human p130 Cas protein. The exact sequence is proprietary.
Purification	The antibody was purified by immunogen affinity chromatography.
Molecular Weight	Predicted: 93 kD; Observed: 130 kD
Form/Buffer	Liquid in 0.42% Potassium phosphate, 0.87% Sodium chloride, pH 7.3, 30% glycerol, and 0.01% sodium azide.
Alternative Names	CAS; CASS1; CRKAS; Breast cancer anti-estrogen resistance protein 1; CRK-associated substrate; Cas scaffolding protein family member 1; p130cas
Gene Symbol	BCAR1
Entrez Gene	9564(Human); 12927(Mouse); 25414(Rat)
SwissProt	P56945(Human); Q61140(Mouse); Q63767(Rat)

*AREX continuously optimizes our products. Webpage content may not reflect the latest updates. For inquiries, please contact info@arexbio.com or your local distributor.

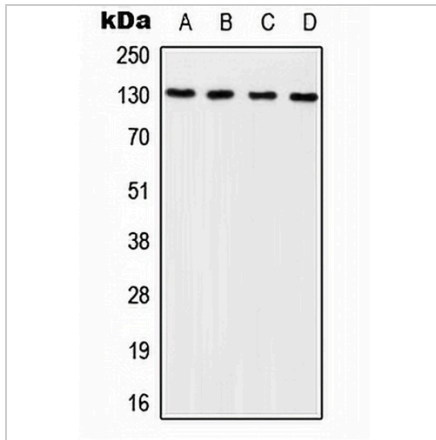
*Clone Number, Reactivity, Source/Host and Clonality can be found in the product name and Key Features section above.

DATASHEET

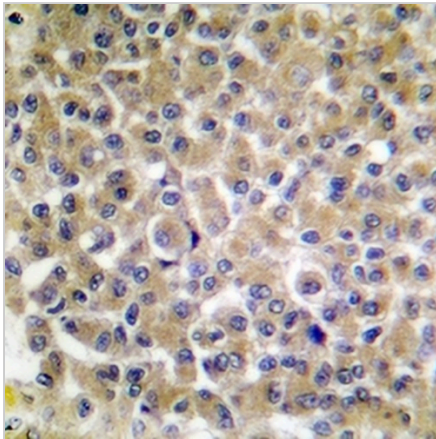
p130 Cas (Phospho-Y249) Rabbit Polyclonal Antibody

CAT. NO. APA07863

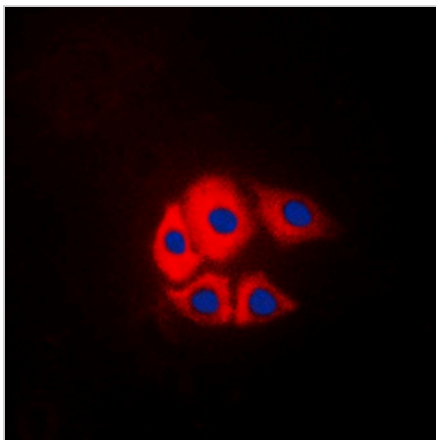
DATA



Western blot analysis of p130 Cas (Phospho-Y249) expression in HEK293T EGF-treated (A), NIH3T3 EGF-treated (B), Raw264.7 EGF-treated (C), PC12 EGF-treated (D) whole cell lysates. (Predicted band size: 93 kD; Observed band size: 130 kD)



Immunohistochemical analysis of p130 Cas (Phospho-Y249) staining in human breast cancer formalin fixed paraffin embedded tissue section. The section was pre-treated using heat mediated antigen retrieval with sodium citrate buffer (pH 6.0). The section was then incubated with the antibody at room temperature and detected using an HRP conjugated compact polymer system. DAB was used as the chromogen. The section was then counterstained with haematoxylin and mounted with DPX.



Immunofluorescent analysis of p130 Cas (Phospho-Y249) staining in NIH3T3 cells. Formalin-fixed cells were permeabilized with 0.1% Triton X-100 in TBS for 5-10 minutes and blocked with 3% BSA-PBS for 30 minutes at room temperature. Cells were probed with the primary antibody in 3% BSA-PBS and incubated overnight at 4 °C in a humidified chamber. Cells were washed with PBST and incubated with a DyLight 594-conjugated secondary antibody (red) in PBS at room temperature in the dark. DAPI was used to stain the cell nuclei (blue).

STORAGE

Store at 4°C short term. For long term storage, store at -20°C, avoiding freeze/thaw cycles.

NOTE

For Research Use Only. Not for diagnostic, therapeutics, prophylactic or in vivo use.