

DATASHEET

GFR Rabbit Polyclonal Antibody

CAT. NO. APA07878

KEY FEATURES

| | | | |
|---------------|-----------------------------------------------------------------------------------------------------------|---------------|---------------------|
| Target | GFR | Source / Host | Rabbit |
| Reactivity | Human, Mouse, Rat | Clonality | Polyclonal |
| Applications | WB, IHC | Conjugation | Unconjugated |
| Form / Buffer | Liquid in 0.42% Potassium phosphate, 0.87% Sodium chloride, pH 7.3, 30% glycerol, and 0.01% sodium azide. | | Storage at -20°C |

BACKGROUND

Guanine nucleotide exchange factor (GEF) for RAP1A, RAP2A and MRAS/M-Ras-GTP. Its association with MRAS inhibits Rap1 activation.

APPLICATION

To ensure optimal assay performance, AREX recommends conducting reagent titration tailored to each testing system for optimal detection results.

| | |
|-----|----------------|
| WB | 1:500 - 1:1000 |
| IHC | 1:50 - 1:100 |

*Results are sample-specific. Please refer to your local assay conditions and test parameters for reference.

PRODUCT OVERVIEW

| | |
|-------------------|----------------------------------------------------------------------------------------------------------------------------------------------------------------------|
| Description | Rabbit polyclonal antibody to GFR |
| Specificity | Recognizes endogenous levels of GFR protein. |
| Antibody Type | Primary antibody |
| Immunogen | KLH-conjugated synthetic peptide encompassing a sequence within the center region of human GFR. The exact sequence is proprietary. |
| Purification | The antibody was purified by immunogen affinity chromatography. |
| Molecular Weight | Predicted: 67 kD; Observed: 68; 52 kD |
| Form/Buffer | Liquid in 0.42% Potassium phosphate, 0.87% Sodium chloride, pH 7.3, 30% glycerol, and 0.01% sodium azide. |
| Alternative Names | GFR; KIAA0277; MRGEF; Rap guanine nucleotide exchange factor 5; Guanine nucleotide exchange factor for Rap1; M-Ras-regulated Rap GEF; MR-GEF; Related to Epac; Repac |
| Gene Symbol | RAPGEF5 |
| Entrez Gene | 9771(Human); 217944(Mouse); 362799(Rat) |
| SwissProt | Q92565(Human); Q8C0Q9(Mouse); P83900(Rat) |

*AREX continuously optimizes our products. Webpage content may not reflect the latest updates. For inquiries, please contact info@arexbio.com or your local distributor.

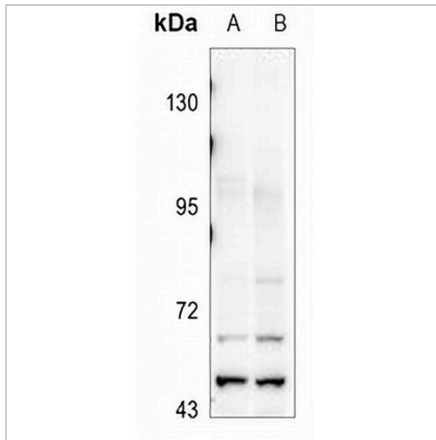
*Clone Number, Reactivity, Source/Host and Clonality can be found in the product name and Key Features section above.

DATASHEET

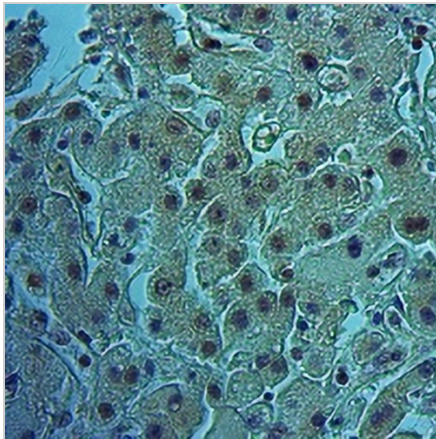
GFR Rabbit Polyclonal Antibody

CAT. NO. APA07878

DATA



Western blot analysis of GFR expression in HEK293T (A), A549 (B) whole cell lysates. (Predicted band size: 67 kD; Observed band size: 68; 52 kD)



Immunohistochemical analysis of GFR staining in human liver cancer formalin fixed paraffin embedded tissue section. The section was pre-treated using heat mediated antigen retrieval with sodium citrate buffer (pH 6.0). The section was then incubated with the antibody at room temperature and detected using an HRP conjugated compact polymer system. DAB was used as the chromogen. The section was then counterstained with haematoxylin and mounted with DPX.

STORAGE

Store at 4°C short term. For long term storage, store at -20°C, avoiding freeze/thaw cycles.

NOTE

For Research Use Only. Not for diagnostic, therapeutics, prophylactic or in vivo use.