

DATASHEET
ABI1 Rabbit Polyclonal Antibody
CAT. NO. APA07897
KEY FEATURES

| | | | |
|---------------|---|---------------|---------------------|
| Target | ABI1 | Source / Host | Rabbit |
| Reactivity | Human, Mouse, Rat, Bovine | Clonality | Polyclonal |
| Applications | WB, IF/ICC | Conjugation | Unconjugated |
| Form / Buffer | Liquid in 0.42% Potassium phosphate, 0.87% Sodium chloride, pH 7.3, 30% glycerol, and 0.01% sodium azide. | | Storage at -20°C |

BACKGROUND

May act in negative regulation of cell growth and transformation by interacting with nonreceptor tyrosine kinases ABL1 and/or ABL2. May play a role in regulation of EGF-induced Erk pathway activation. Involved in cytoskeletal reorganization and EGFR signaling. Together with EPS8 participates in transduction of signals from Ras to Rac. In vitro, a trimeric complex of ABI1, EPS8 and SOS1 exhibits Rac specific guanine nucleotide exchange factor (GEF) activity and ABI1 seems to act as an adapter in the complex. Regulates ABL1/c-Abl-mediated phosphorylation of ENAH. Recruits WASF1 to lamellipodia and there seems to regulate WASF1 protein level.

APPLICATION

To ensure optimal assay performance, AREX recommends conducting reagent titration tailored to each testing system for optimal detection results.

| | |
|--------|----------------|
| WB | 1:500 - 1:1000 |
| IF/ICC | 1:50 - 1:200 |

*Results are sample-specific. Please refer to your local assay conditions and test parameters for reference.

PRODUCT OVERVIEW

| | |
|-------------------|---|
| Description | Rabbit polyclonal antibody to ABI1 |
| Specificity | Recognizes endogenous levels of ABI1 protein. |
| Antibody Type | Primary antibody |
| Immunogen | KLH-conjugated synthetic peptide encompassing a sequence within the center region of human ABI1. The exact sequence is proprietary. |
| Purification | The antibody was purified by immunogen affinity chromatography. |
| Molecular Weight | Predicted: 55 kD; Observed: 65 kD |
| Form/Buffer | Liquid in 0.42% Potassium phosphate, 0.87% Sodium chloride, pH 7.3, 30% glycerol, and 0.01% sodium azide. |
| Alternative Names | SSH3BP1; Abl interactor 1; Abelson interactor 1; Abi-1; Abl-binding protein 4; AblBP4; Eps8 SH3 domain-binding protein; Eps8-binding protein; Nap1-binding protein; Nap1BP; Spectrin SH3 domain-binding protein 1; e3B1 |
| Gene Symbol | ABI1 |
| Entrez Gene | 10006(Human); 11308(Mouse); 79249(Rat) |
| SwissProt | Q8IZP0(Human); Q8CBW3(Mouse); Q9QZM5(Rat) |

*AREX continuously optimizes our products. Webpage content may not reflect the latest updates. For inquiries, please contact info@arexbio.com or your local distributor.

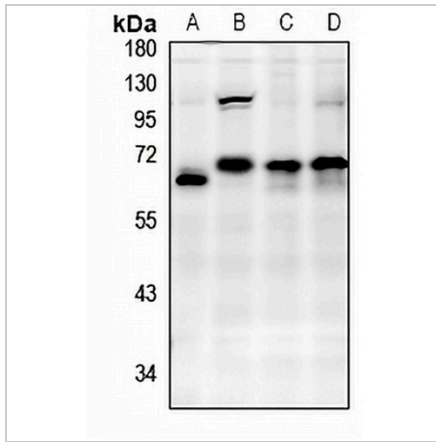
*Clone Number, Reactivity, Source/Host and Clonality can be found in the product name and Key Features section above.

DATASHEET

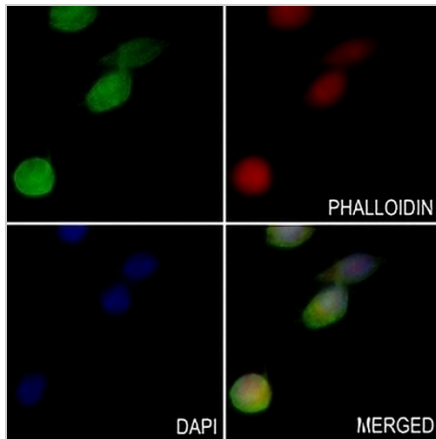
ABI1 Rabbit Polyclonal Antibody

CAT. NO. APA07897

DATA



Western blot analysis of ABI1 expression in rat brain (A), U87MG (B), Myla2059 (C), K562 (D) whole cell lysates. (Predicted band size: 55 kD; Observed band size: 65 kD)



Immunofluorescent analysis of ABI1 staining in VB2 cells. Formalin-fixed cells were permeabilized with 0.1% Triton X-100 in TBS for 5-10 minutes and blocked with 3% BSA-PBS for 30 minutes at room temperature. Cells were probed with the primary antibody in 3% BSA-PBS and incubated overnight at 4 °C in a humidified chamber. Cells were washed with PBST and incubated with a AREX® Fluor 488 -conjugated secondary antibody (green) in PBS at room temperature in the dark. Phalloidin - AREX® Fluor 594 was used to stain Actin filaments (red). DAPI was used to stain the cell nuclei (blue).

STORAGE

Store at 4°C short term. For long term storage, store at -20°C, avoiding freeze/thaw cycles.

NOTE

For Research Use Only. Not for diagnostic, therapeutics, prophylactic or in vivo use.