

DATASHEET

CD172b Rabbit Polyclonal Antibody

CAT. NO. APA07923

KEY FEATURES

| | | | |
|---------------|---|---------------|---------------------|
| Target | CD172b | Source / Host | Rabbit |
| Reactivity | Human, Mouse, Bovine | Clonality | Polyclonal |
| Applications | WB | Conjugation | Unconjugated |
| Form / Buffer | Liquid in 0.42% Potassium phosphate, 0.87% Sodium chloride, pH 7.3, 30% glycerol, and 0.01% sodium azide. | | Storage at -20°C |

BACKGROUND

Immunoglobulin-like cell surface receptor involved in the negative regulation of receptor tyrosine kinase-coupled signaling processes. Also participates in the recruitment of tyrosine kinase SYK. Triggers activation of myeloid cells when associated with TYROBP.

APPLICATION

To ensure optimal assay performance, AREX recommends conducting reagent titration tailored to each testing system for optimal detection results.

| | |
|----|----------------|
| WB | 1:500 - 1:1000 |
|----|----------------|

*Results are sample-specific. Please refer to your local assay conditions and test parameters for reference.

PRODUCT OVERVIEW

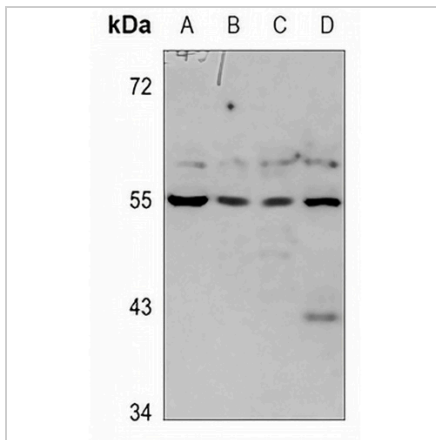
| | |
|-------------------|---|
| Description | Rabbit polyclonal antibody to CD172b |
| Specificity | Recognizes endogenous levels of CD172b protein. |
| Antibody Type | Primary antibody |
| Immunogen | KLH-conjugated synthetic peptide encompassing a sequence within the center region of human CD172b. The exact sequence is proprietary. |
| Purification | The antibody was purified by immunogen affinity chromatography. |
| Molecular Weight | Predicted: 43 kD; Observed: 55 kD |
| Form/Buffer | Liquid in 0.42% Potassium phosphate, 0.87% Sodium chloride, pH 7.3, 30% glycerol, and 0.01% sodium azide. |
| Alternative Names | Signal-regulatory protein beta-1; SIRP-beta-1; CD172 antigen-like family member B; CD172b |
| Gene Symbol | SIRPB1 |
| Entrez Gene | 10326(Human) |
| SwissProt | O00241(Human) |

*AREX continuously optimizes our products. Webpage content may not reflect the latest updates. For inquiries, please contact info@arexbio.com or your local distributor.

*Clone Number, Reactivity, Source/Host and Clonality can be found in the product name and Key Features section above.

DATASHEET**CD172b Rabbit Polyclonal Antibody**

CAT. NO. APA07923

DATA

Western blot analysis of CD172b expression in HEK293T (A), H1688 (B), A549 (C), mouse muscle (D) whole cell lysates. (Predicted band size: 43 kD; Observed band size: 55 kD)

STORAGE

Store at 4°C short term. For long term storage, store at -20°C, avoiding freeze/thaw cycles.

NOTE

For Research Use Only. Not for diagnostic, therapeutics, prophylactic or in vivo use.