

DATASHEET

ABCA7 Rabbit Polyclonal Antibody

CAT. NO. APA07925

KEY FEATURES

Target	ABCA7	Source / Host	Rabbit
Reactivity	Human, Mouse, Rat	Clonality	Polyclonal
Applications	WB	Conjugation	Unconjugated
Form / Buffer	Liquid in 0.42% Potassium phosphate, 0.87% Sodium chloride, pH 7.3, 30% glycerol, and 0.01% sodium azide.		Storage at -20°C

BACKGROUND

Catalyzes the translocation of specific phospholipids from the cytoplasmic to the extracellular/luminal leaflet of membrane coupled to the hydrolysis of ATP . Transports preferentially phosphatidylserine over phosphatidylcholine . Plays a role in lipid homeostasis and macrophage-mediated phagocytosis . Binds APOA1 and may function in apolipoprotein-mediated phospholipid efflux from cells . May also mediate cholesterol efflux . May regulate cellular ceramide homeostasis during keratinocyte differentiation . Involved in lipid raft organization and CD1D localization on thymocytes and antigen-presenting cells, which plays an important role in natural killer T-cell development and activation . Plays a role in phagocytosis of apoptotic cells by macrophages .

APPLICATION

To ensure optimal assay performance, AREX recommends conducting reagent titration tailored to each testing system for optimal detection results.

WB	1:500 - 1:1000
----	----------------

*Results are sample-specific. Please refer to your local assay conditions and test parameters for reference.

PRODUCT OVERVIEW

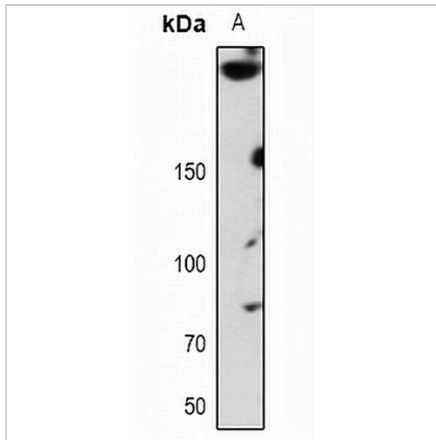
Description	Rabbit polyclonal antibody to ABCA7
Specificity	Recognizes endogenous levels of ABCA7 protein.
Antibody Type	Primary antibody
Immunogen	KLH-conjugated synthetic peptide encompassing a sequence within the C-term region of human ABCA7. The exact sequence is proprietary.
Purification	The antibody was purified by immunogen affinity chromatography.
Molecular Weight	Predicted: 234 kD; Observed: 235 kD
Form/Buffer	Liquid in 0.42% Potassium phosphate, 0.87% Sodium chloride, pH 7.3, 30% glycerol, and 0.01% sodium azide.
Alternative Names	ATP-binding cassette sub-family A member 7; ABCA-SSN; Autoantigen SS-N; Macrophage ABC transporter
Gene Symbol	ABCA7
Entrez Gene	10347(Human); 27403(Mouse); 299609(Rat)
SwissProt	Q8IZY2(Human); Q91V24(Mouse); Q7TNJ2(Rat)

*AREX continuously optimizes our products. Webpage content may not reflect the latest updates. For inquiries, please contact info@arexbio.com or your local distributor.

*Clone Number, Reactivity, Source/Host and Clonality can be found in the product name and Key Features section above.

DATASHEET**ABCA7 Rabbit Polyclonal Antibody**

CAT. NO. APA07925

DATA

Western blot analysis of ABCA7 expression in RAW264.7 (A) whole cell lysates. (Predicted band size: 234 kD; Observed band size: 235 kD)

STORAGE

Store at 4°C short term. For long term storage, store at -20°C, avoiding freeze/thaw cycles.

NOTE

For Research Use Only. Not for diagnostic, therapeutics, prophylactic or in vivo use.