

DATASHEET

NDC80 Rabbit Polyclonal Antibody

CAT. NO. APA07930

KEY FEATURES

Target	NDC80	Source / Host	Rabbit
Reactivity	Human, Mouse, Rat, Bovine, Dog, Monkey	Clonality	Polyclonal
Applications	WB, IF/ICC	Conjugation	Unconjugated
Form / Buffer	Liquid in 0.42% Potassium phosphate, 0.87% Sodium chloride, pH 7.3, 30% glycerol, and 0.01% sodium azide.		Storage at -20°C

BACKGROUND

Acts as a component of the essential kinetochore-associated NDC80 complex, which is required for chromosome segregation and spindle checkpoint activity . Required for kinetochore integrity and the organization of stable microtubule binding sites in the outer plate of the kinetochore . The NDC80 complex synergistically enhances the affinity of the SKA1 complex for microtubules and may allow the NDC80 complex to track depolymerizing microtubules . Plays a role in chromosome congression and is essential for the end-on attachment of the kinetochores to spindle microtubules .

APPLICATION

To ensure optimal assay performance, AREX recommends conducting reagent titration tailored to each testing system for optimal detection results.

WB	1:500 - 1:1000
IF/ICC	1:50 - 1:200

*Results are sample-specific. Please refer to your local assay conditions and test parameters for reference.

PRODUCT OVERVIEW

Description	Rabbit polyclonal antibody to NDC80
Specificity	Recognizes endogenous levels of NDC80 protein.
Antibody Type	Primary antibody
Immunogen	KLH-conjugated synthetic peptide encompassing a sequence within the center region of human NDC80. The exact sequence is proprietary.
Purification	The antibody was purified by immunogen affinity chromatography.
Molecular Weight	Predicted: 73 kD; Observed: 74 kD
Form/Buffer	Liquid in 0.42% Potassium phosphate, 0.87% Sodium chloride, pH 7.3, 30% glycerol, and 0.01% sodium azide.
Alternative Names	HEC; HEC1; KNTC2; Kinetochore protein NDC80 homolog; Highly expressed in cancer protein; Kinetochore protein Hec1; HsHec1; Kinetochore-associated protein 2; Retinoblastoma-associated protein HEC
Gene Symbol	NDC80
Entrez Gene	10403(Human); 67052(Mouse)
SwissProt	O14777(Human); Q9D0F1(Mouse)

*AREX continuously optimizes our products. Webpage content may not reflect the latest updates. For inquiries, please contact info@arexbio.com or your local distributor.

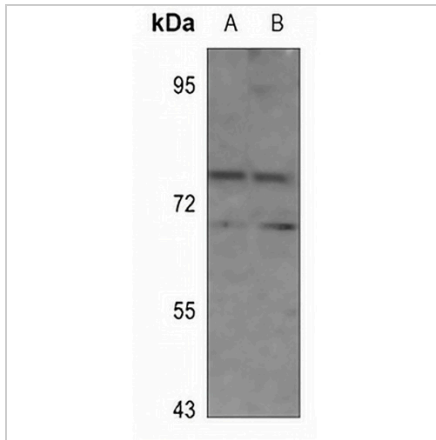
*Clone Number, Reactivity, Source/Host and Clonality can be found in the product name and Key Features section above.

DATASHEET

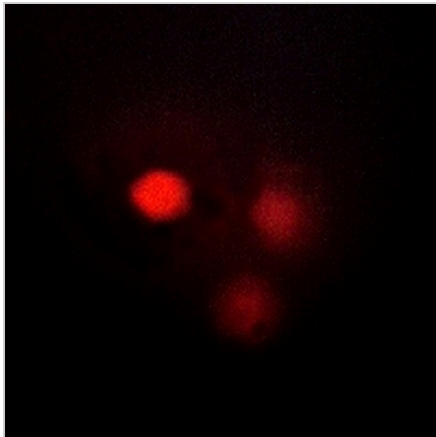
NDC80 Rabbit Polyclonal Antibody

CAT. NO. APA07930

DATA



Western blot analysis of NDC80 expression in mouse spleen (A), rat spleen (B) whole cell lysates. (Predicted band size: 73 kD; Observed band size: 74 kD)



Immunofluorescent analysis of NDC80 staining in HuvEc cells. Formalin-fixed cells were permeabilized with 0.1% Triton X-100 in TBS for 5-10 minutes and blocked with 3% BSA-PBS for 30 minutes at room temperature. Cells were probed with the primary antibody in 3% BSA-PBS and incubated overnight at 4 °C in a humidified chamber. Cells were washed with PBST and incubated with a AREX® Fluor 594-conjugated secondary antibody (red) in PBS at room temperature in the dark.

STORAGE

Store at 4°C short term. For long term storage, store at -20°C, avoiding freeze/thaw cycles.

NOTE

For Research Use Only. Not for diagnostic, therapeutics, prophylactic or in vivo use.