

DATASHEET

PGRMC2 Rabbit Polyclonal Antibody

CAT. NO. APA07934

KEY FEATURES

Target	PGRMC2	Source / Host	Rabbit
Reactivity	Human, Rat, Bovine, Pig	Clonality	Polyclonal
Applications	WB, IHC	Conjugation	Unconjugated
Form / Buffer	Liquid in 0.42% Potassium phosphate, 0.87% Sodium chloride, pH 7.3, 30% glycerol, and 0.01% sodium azide.		Storage at-20°C

BACKGROUND

Required for the maintenance of uterine histoarchitecture and normal female reproductive lifespan . May serve as a universal non-classical progesterone receptor in the uterus (Probable). Intracellular heme chaperone required for delivery of labile, or signaling heme, to the nucleus . Plays a role in adipocyte function and systemic glucose homeostasis . Intracellular heme chaperone required for delivery of labile, or signaling heme, to the nucleus . Plays a role in adipocyte function and systemic glucose homeostasis . In brown fat, which has a high demand for heme, delivery of labile heme in the nucleus regulates the activity of heme-responsive transcriptional repressors such as NR1D1 and BACH1 .

APPLICATION

To ensure optimal assay performance, AREX recommends conducting reagent titration tailored to each testing system for optimal detection results.

WB	1:500 - 1:1000
IHC	1:50 - 1:100

*Results are sample-specific. Please refer to your local assay conditions and test parameters for reference.

PRODUCT OVERVIEW

Description	Rabbit polyclonal antibody to PGRMC2
Specificity	Recognizes endogenous levels of PGRMC2 protein.
Antibody Type	Primary antibody
Immunogen	KLH-conjugated synthetic peptide encompassing a sequence within the C-term region of human PGRMC2. The exact sequence is proprietary.
Purification	The antibody was purified by immunogen affinity chromatography.
Molecular Weight	Predicted: 23 kD; Observed: 23; 26 kD
Form/Buffer	Liquid in 0.42% Potassium phosphate, 0.87% Sodium chloride, pH 7.3, 30% glycerol, and 0.01% sodium azide.
Alternative Names	DG6; PMBP; Membrane-associated progesterone receptor component 2; Progesterone membrane-binding protein; Steroid receptor protein DG6
Gene Symbol	PGRMC2
Entrez Gene	10424(Human); 361940(Rat)
SwissProt	O15173(Human); Q5XIU9(Rat)

*AREX continuously optimizes our products. Webpage content may not reflect the latest updates. For inquiries, please contact info@arexbio.com or your local distributor.

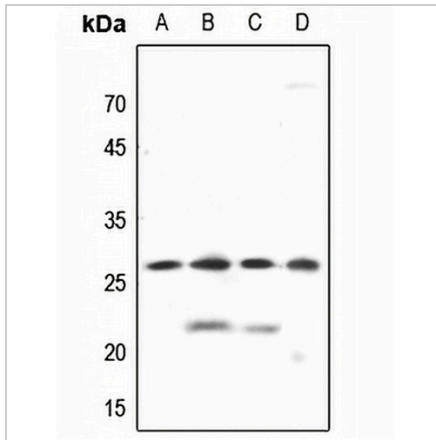
*Clone Number, Reactivity, Source/Host and Clonality can be found in the product name and Key Features section above.

DATASHEET

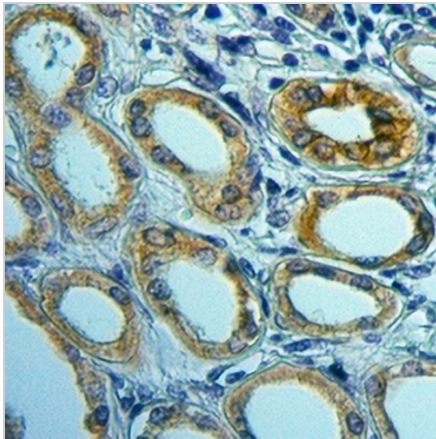
PGRMC2 Rabbit Polyclonal Antibody

CAT. NO. APA07934

DATA



Western blot analysis of PGRMC2 expression in HEK293T (A), HeLa (B), HGC27 (C), rat liver (D) whole cell lysates. (Predicted band size: 23 kD; Observed band size: 23; 26 kD)



Immunohistochemical analysis of PGRMC2 staining in human kidney cancer formalin fixed paraffin embedded tissue section. The section was pre-treated using heat mediated antigen retrieval with sodium citrate buffer (pH 6.0). The section was then incubated with the antibody at room temperature and detected using an HRP conjugated compact polymer system. DAB was used as the chromogen. The section was then counterstained with haematoxylin and mounted with DPX.

STORAGE

Store at 4°C short term. For long term storage, store at -20°C, avoiding freeze/thaw cycles.

NOTE

For Research Use Only. Not for diagnostic, therapeutics, prophylactic or in vivo use.